

PURE SALMON TRANSMISSION IMPROVEMENTS PROJECT

Appalachian Power representatives plan to upgrade the electric transmission grid in Tazewell County. The Pure Salmon Transmission Improvements Project involves building approximately 2 miles of electric transmission line and a new substation. Construction begins early 2023 and concludes the end of 2024.

WHAT

The project proposes:

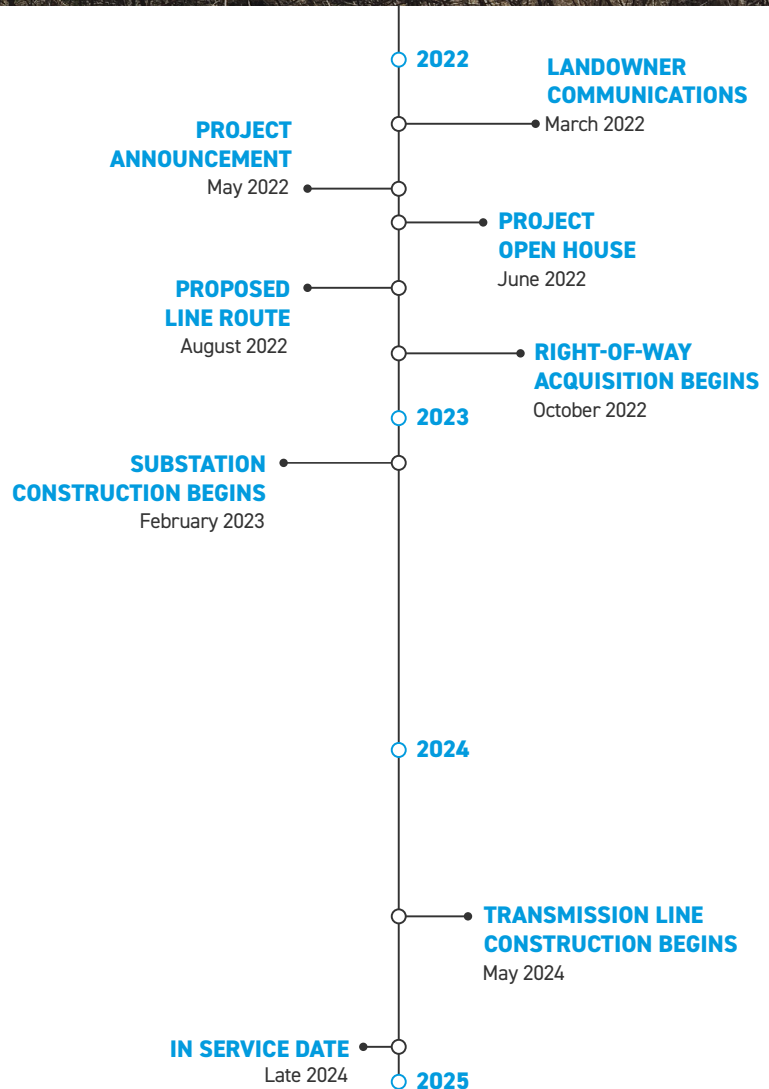
- Building approximately 2 miles of 138-kilovolt (kV) transmission line
- Constructing the new 40,000 square foot Salmon Substation

WHY

The project supports the construction of the new Pure Salmon Fish Farm while also providing an additional power source to the local existing electrical system to increase reliability for the growing area.

WHERE

The study segments begin at the proposed substation located at the Pure Salmon Fish Farm and travel east, approximately 2 miles and end at an existing power line.



Timeline subject to change.

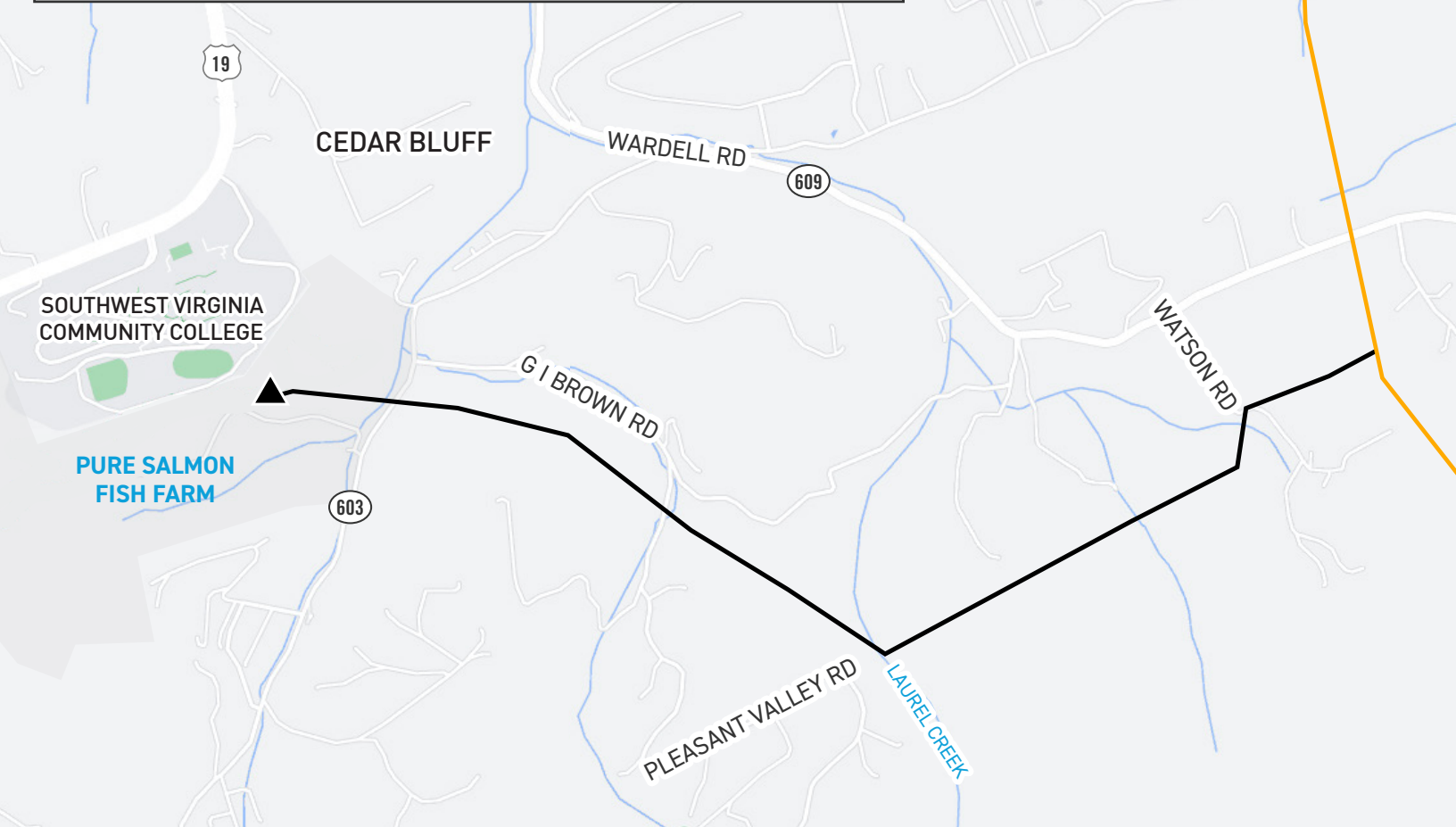
PURE SALMON TRANSMISSION IMPROVEMENTS PROJECT

EXISTING TRANSMISSION LINE

PROPOSED SUBSTATION

PROPOSED LINE ROUTE FOR TRANSMISSION LINE

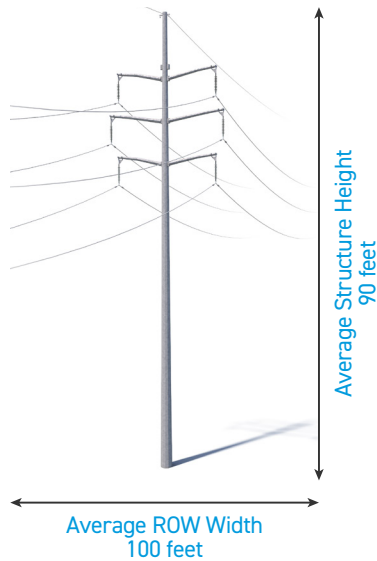
PURE SALMON FISH FARM



TYPICAL STRUCTURES

Crews plan to build the power line using double circuit, steel single poles.

At Appalachian Power, we are committed to meeting the energy needs of customers while balancing impacts to the environment and landowners.



Exact structure, height, and right-of-way requirements may vary.

TYPICAL SUBSTATION

Substations serve as electrical intersections converting the power to voltage levels for use in homes, businesses and industrial facilities.

*Substation shown is a general depiction of the proposed facilities for the project. It does not represent final design.



WE VALUE YOUR INPUT. PLEASE SEND COMMENTS AND QUESTIONS TO:

CORTNEY MUSTARD • PROJECT OUTREACH SPECIALIST

APCO_OUTREACH@AEP.COM • 833-313-3743

AppalachianPower.com/PureSalmon