

HILLMAN HIGHWAY-SALTVILLE TRANSMISSION LINE REBUILD PROJECT



Appalachian Power representatives plan upgrades to the transmission system in Washington and Smyth counties. The Hillman Highway-Saltville Transmission Line Rebuild Project involves rebuilding about 20 miles of 69-kilovolt electric transmission line in or near the existing right-of-way. Construction begins fall 2024 and concludes fall 2026.



WHAT

The project involves rebuilding about 20 miles of transmission line in or near the existing right-of-way.

WHY

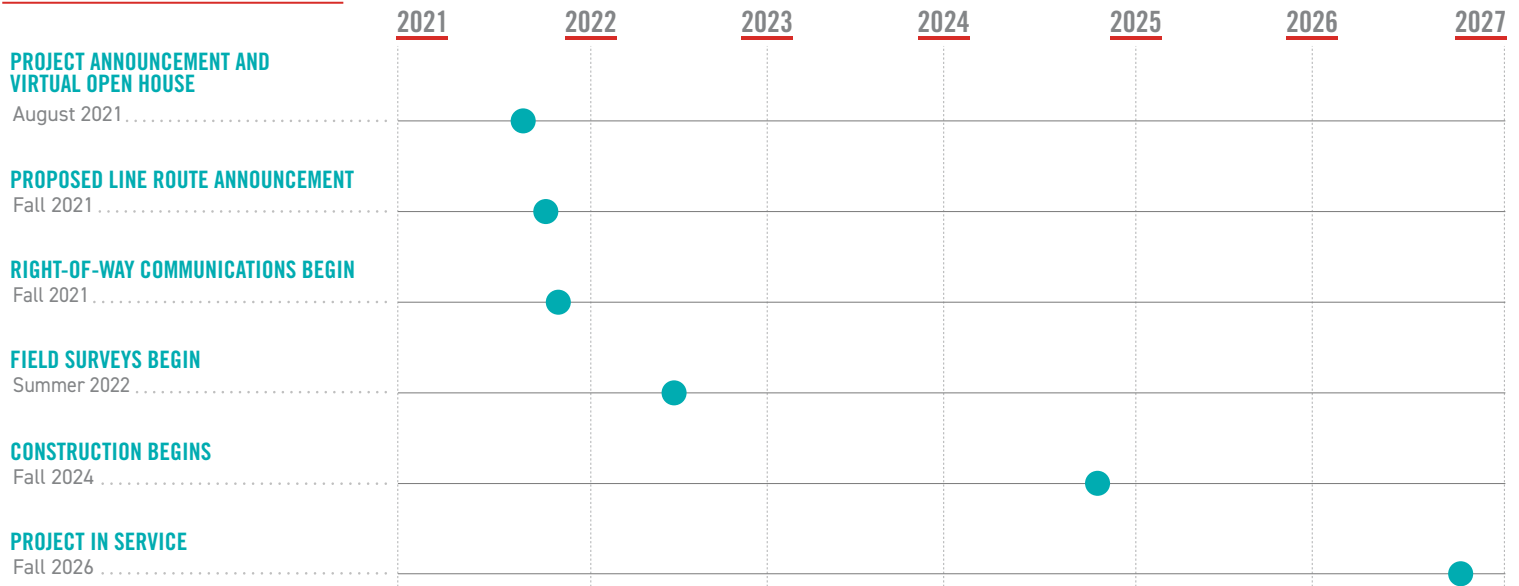
The upgrades:

- Replace aging wooden poles from the 1950s with modern steel poles
- Increase electric reliability in the area and strengthen the transmission system
- Replace shield wire to protect the transmission line from lightning strikes and prevent power outages

WHERE




The rebuild begins at the Hillman Highway Substation located off Hillman Highway in Abingdon. The upgrades travel northeast along Hillman Highway, passing through Meadowview and Glade Spring before turning north toward VA-107. The rebuild ends at the Saltville Substation located off of East Main Street in Saltville.

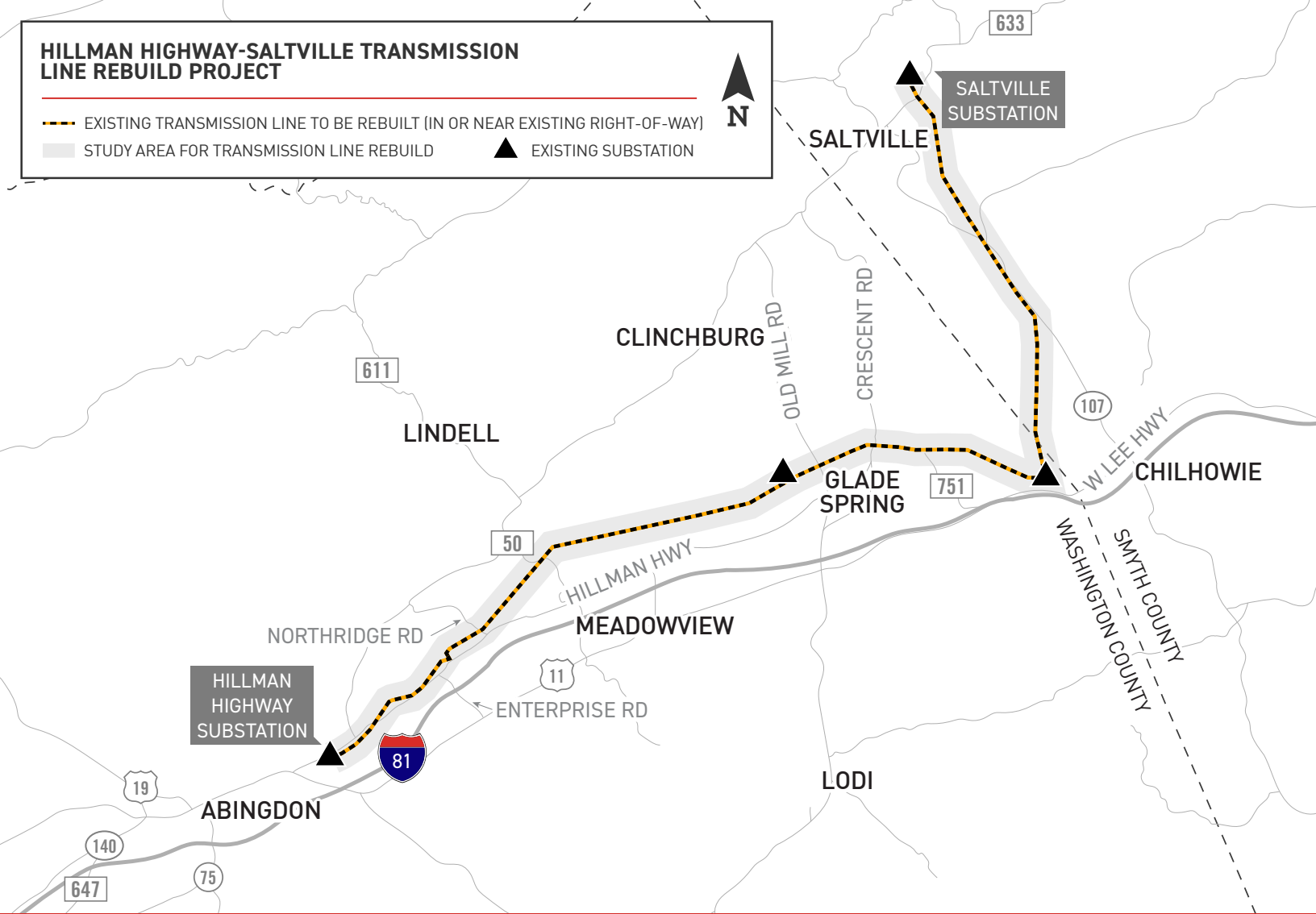
PROJECT SCHEDULE



*Timeline subject to change.

HILLMAN HIGHWAY-SALTVILLE TRANSMISSION LINE REBUILD PROJECT

-  EXISTING TRANSMISSION LINE TO BE REBUILT (IN OR NEAR EXISTING RIGHT-OF-WAY)
-  STUDY AREA FOR TRANSMISSION LINE REBUILD
-  EXISTING SUBSTATION



TYPICAL STRUCTURES

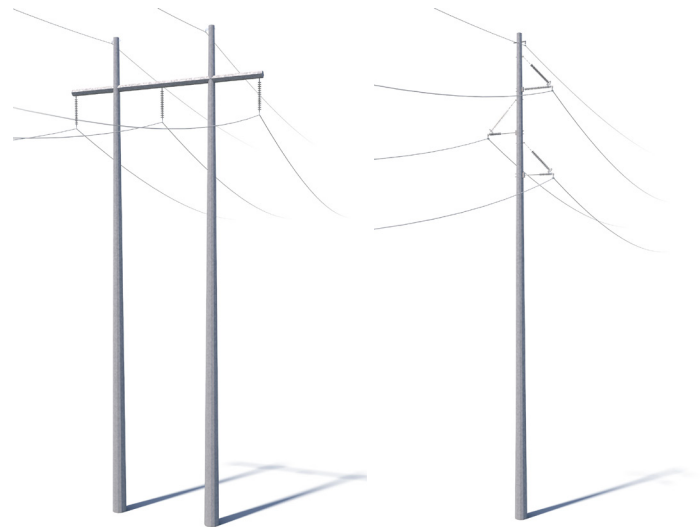
Crews plan to rebuild the line using steel H-frames and single poles.

Proposed Structure Height: **Approximately 75 feet***

Right-of-Way Width: **Approximately 60-100 feet***

At Appalachian Power, we are committed to meeting the energy needs of customers while protecting the environment and natural beauty of the region.

*Exact structure, height and right-of-way requirements may vary



APPALACHIAN POWER VALUES YOUR INPUT ABOUT THIS PROJECT. PLEASE SEND COMMENTS AND QUESTIONS TO:

NICOLE HODGES

Project Outreach Specialist

833-313-3743

Apco_Outreach@aep.com

[AppalachianPower.com/HillmanHighway](https://www.AppalachianPower.com/HillmanHighway)

