



- TRANSMISSION LINE TO BE REBUILT
- ROAD
- NWI WETLAND
- MAP TILE
- NGL PIPELINE
- RAILROAD
- LAKE/POND (NHD)
- PARCEL BOUNDARY
- HISTORIC BUILDING (NRHP)
- STREAM (NHD)
- FLOODPLAIN

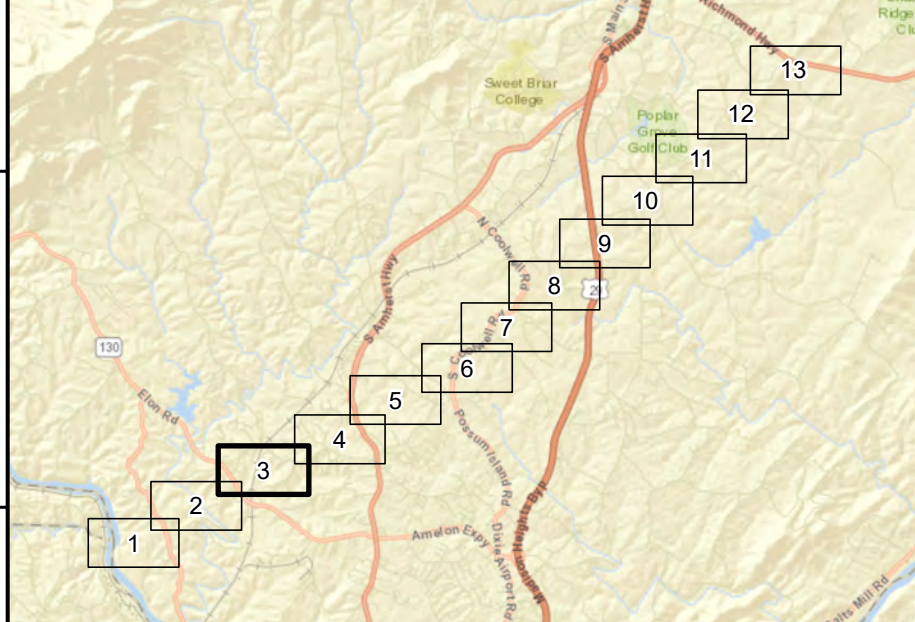


Transmission line routes are preliminary and subject to change

1 inch = 200 feet  
when printed at 11"x17" scale becomes 1 inch = 400 feet

0 200 400 600  
 Feet

Imagery Source: Esri Aerial Imagery



## Aerial Map 3 of 13

Amherst - Reusens  
 Central Virginia Transmission  
 Reliability Project

Note: Study segments are alternatives to review to determine a final line route. Only one route between project end points will be built.

July 31, 2020