

MANGANA HEIN TRANSMISSION IMPROVEMENTS PROJECT

The Mangana Hein Transmission Improvements Project involves the construction of approximately 2 miles of new double-circuit 138-kilovolt (kV) transmission line in Webb County. Crews expect to begin construction late 2026 and conclude late 2027.

WHAT

The project involves building approximately 2 miles of new double-circuit 138-kV transmission line.

AEP Texas officials plan to file an application to amend its Certificate of Convenience and Necessity (CCN) application with the Public Utility Commission of Texas (PUC) in spring 2025, following a review of public input on route link development and additional route analysis. The final line route is determined by the PUC.

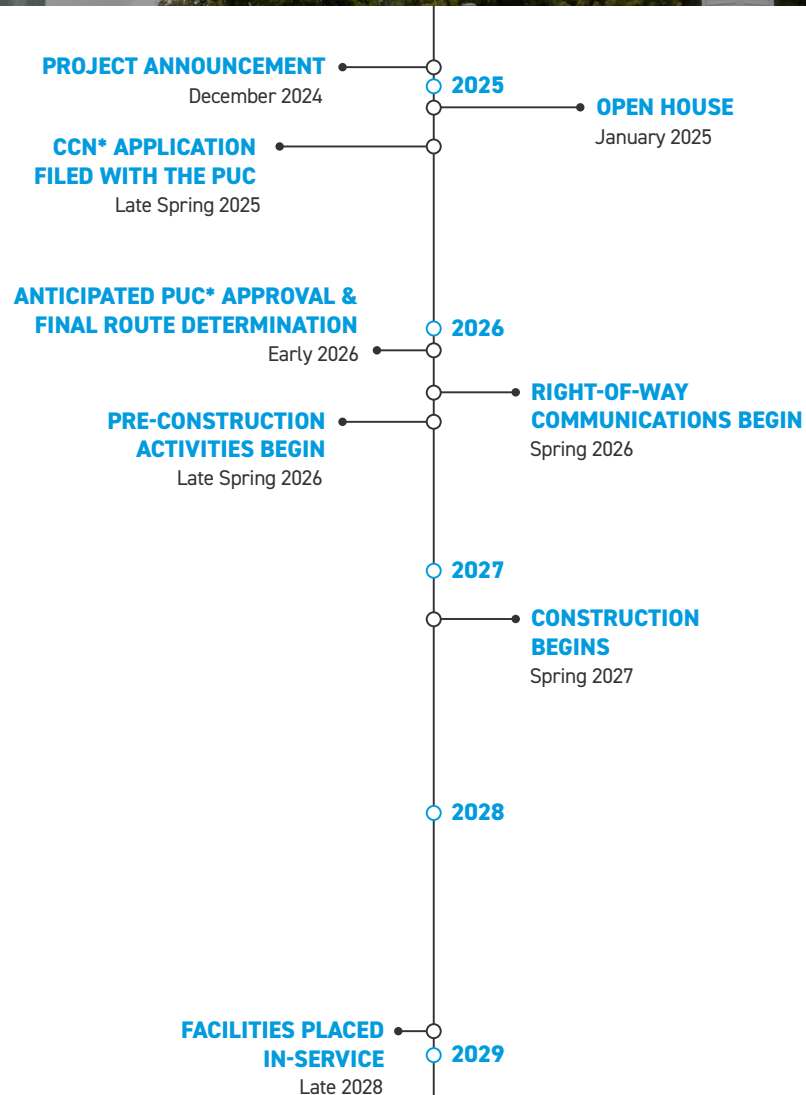
WHY

The proposed project improves regional reliability and resiliency with the addition of a new 138-kV transmission line and modernizes the electric system to allow more flexibility to address the area's growing power demand and ensures reliable power, reducing the likelihood and duration of outages for area customers.

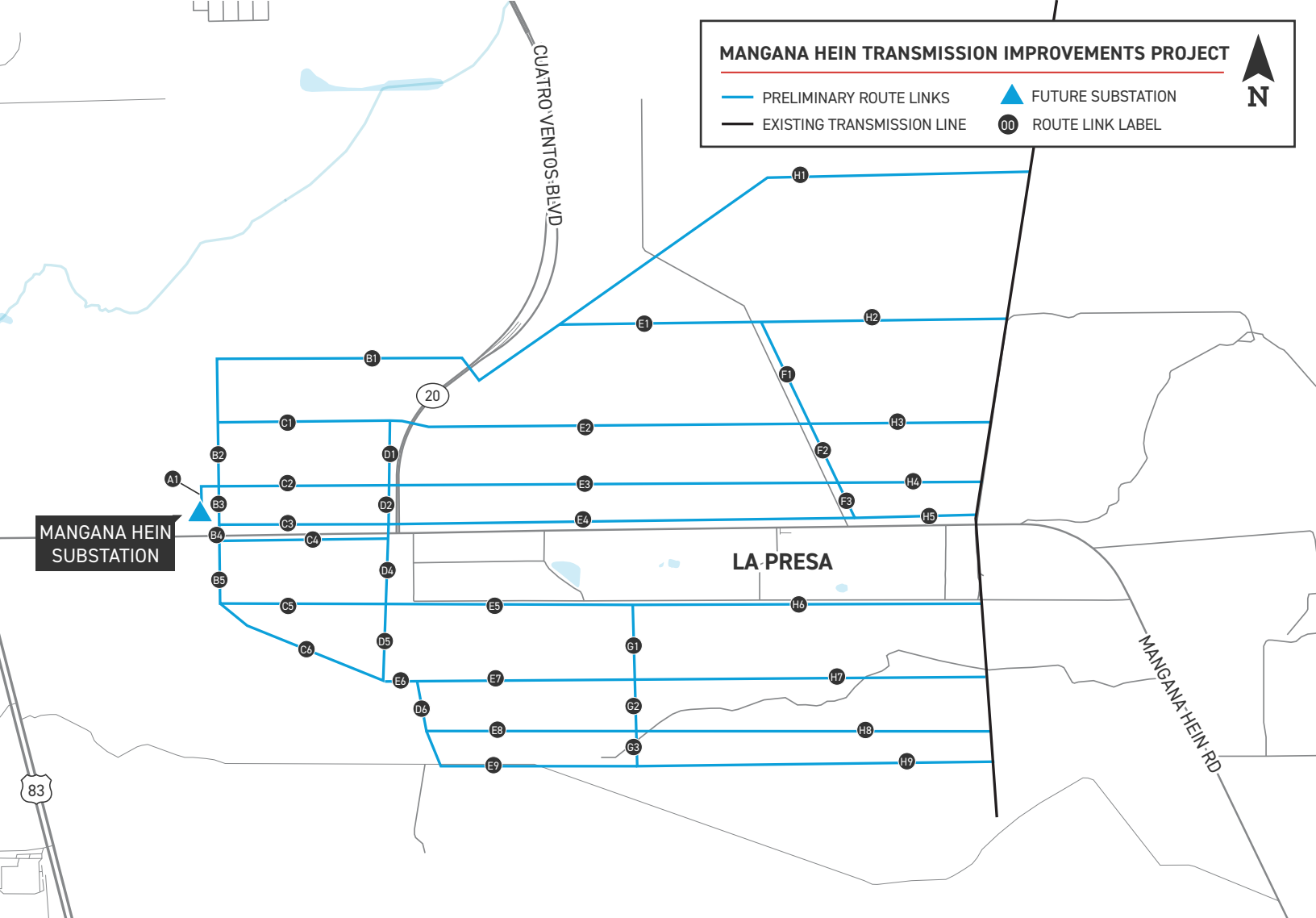
WHERE

The project area includes the city of Laredo in Webb County.

Landowner feedback is critical because it allows AEP Texas to further define the preliminary route links before they are submitted to the PUC as part of the CCN application.



*CCN: Certificate of Convenience and Necessity
PUC: Public Utility Commission of Texas
**Timeline Subject to Change



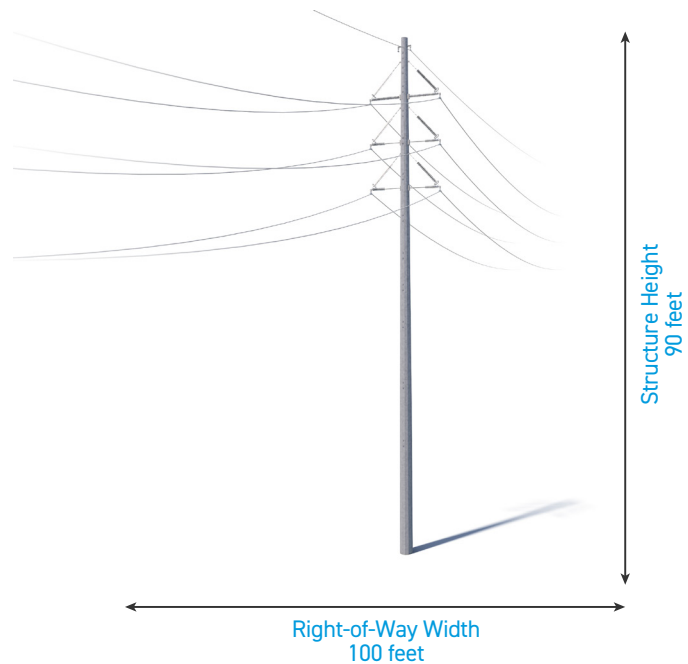
TYPICAL STRUCTURES

AEP Texas plans to install single steel poles for this project.

Typical Structure Height: **Approximately 90 feet***

Typical Distance Between Structures: **Approximately 550 feet***

Typical Right-of-Way Width: **Approximately 100 feet***



*Exact structure, height, and right-of-way requirements may vary.

WE VALUE YOUR INPUT. PLEASE SEND COMMENTS AND QUESTIONS TO:

AEPTexasOUTREACH@AEP.COM • 833-329-4865

AEPTexas.COM/MANGANA



12/09/2024