

# PRATTVILLE - SAND SPRINGS

## TRANSMISSION LINE REBUILD PROJECT

**PUBLIC SERVICE  
COMPANY OF  
OKLAHOMA**

An AEP Company

BOUNDLESS ENERGY™

Public Service Company of Oklahoma (PSO) and AEP Oklahoma Transmission Company, Inc., representatives plan power grid upgrades in Sand Springs to increase electric reliability and support economic growth. The \$4 million investment involves rebuilding about 3 miles of transmission line and rebuilding a substation.

### WHAT

The project involves:

- Replacing about 3 miles of 138-kilovolt transmission line between Prattville Substation located off South 112th Avenue West in Prattville and the Sand Springs Substation located on the north side of the Arkansas River off South Main Street in Sand Springs
- Rebuilding the Sand Springs Substation

Company representatives plan to rebuild the power line in the existing right-of-way, which may require acquiring new or updating existing property easements. Easements are defined land rights that property owners grant the utility to allow for the safe construction, operation and maintenance of the power line.

### WHY

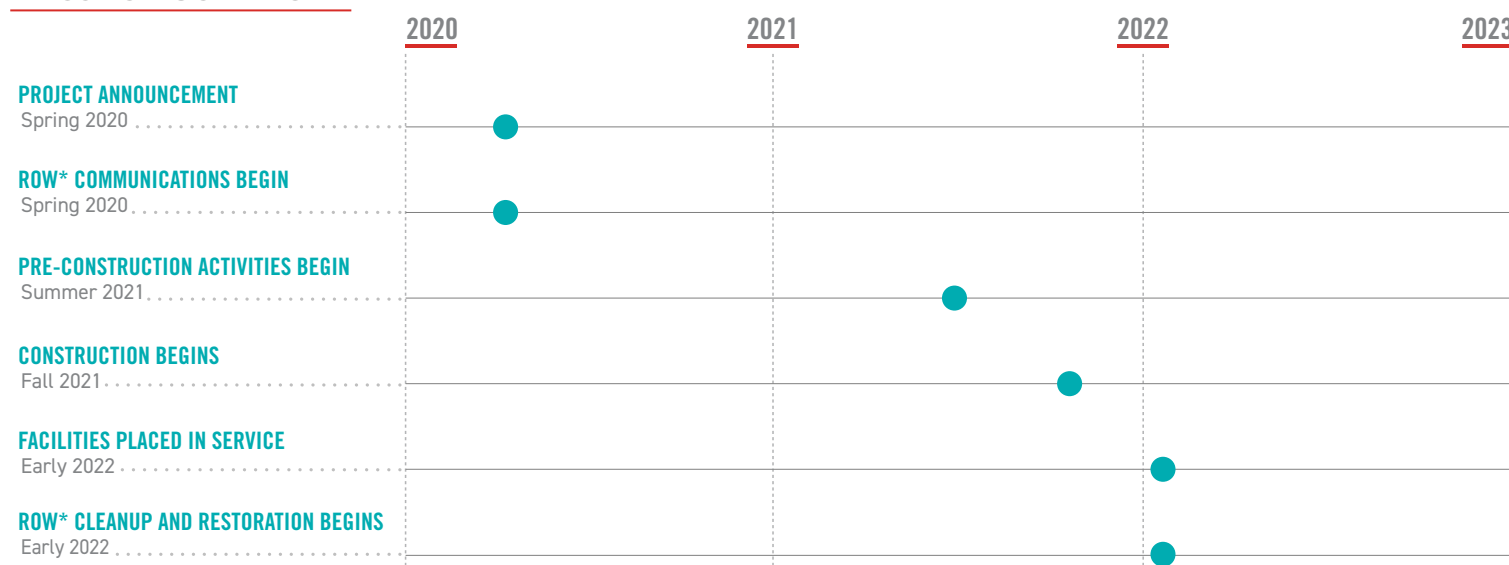
The project strengthens the electric transmission system by replacing deteriorating wooden poles from the 1960s with modern steel poles. The upgrade ensures the power line complies with the company's structural standards, improves the lines operational performance and reduces the need for frequent equipment repairs.

### WHERE/WHEN

The Prattville - Sand Springs transmission line begins at the Prattville Substation, located southwest of East 41st Street and Highway 97 intersection and travels northeast, across the Arkansas River, where it ends at the Sand Springs Substation located just east of South Main Street in Sand Springs.

Crews plan to begin construction in Fall 2021 and conclude in early 2022.

### PROJECT SCHEDULE



\*ROW: Right-of-Way \*\*Timeline subject to change.

## TYPICAL STRUCTURES

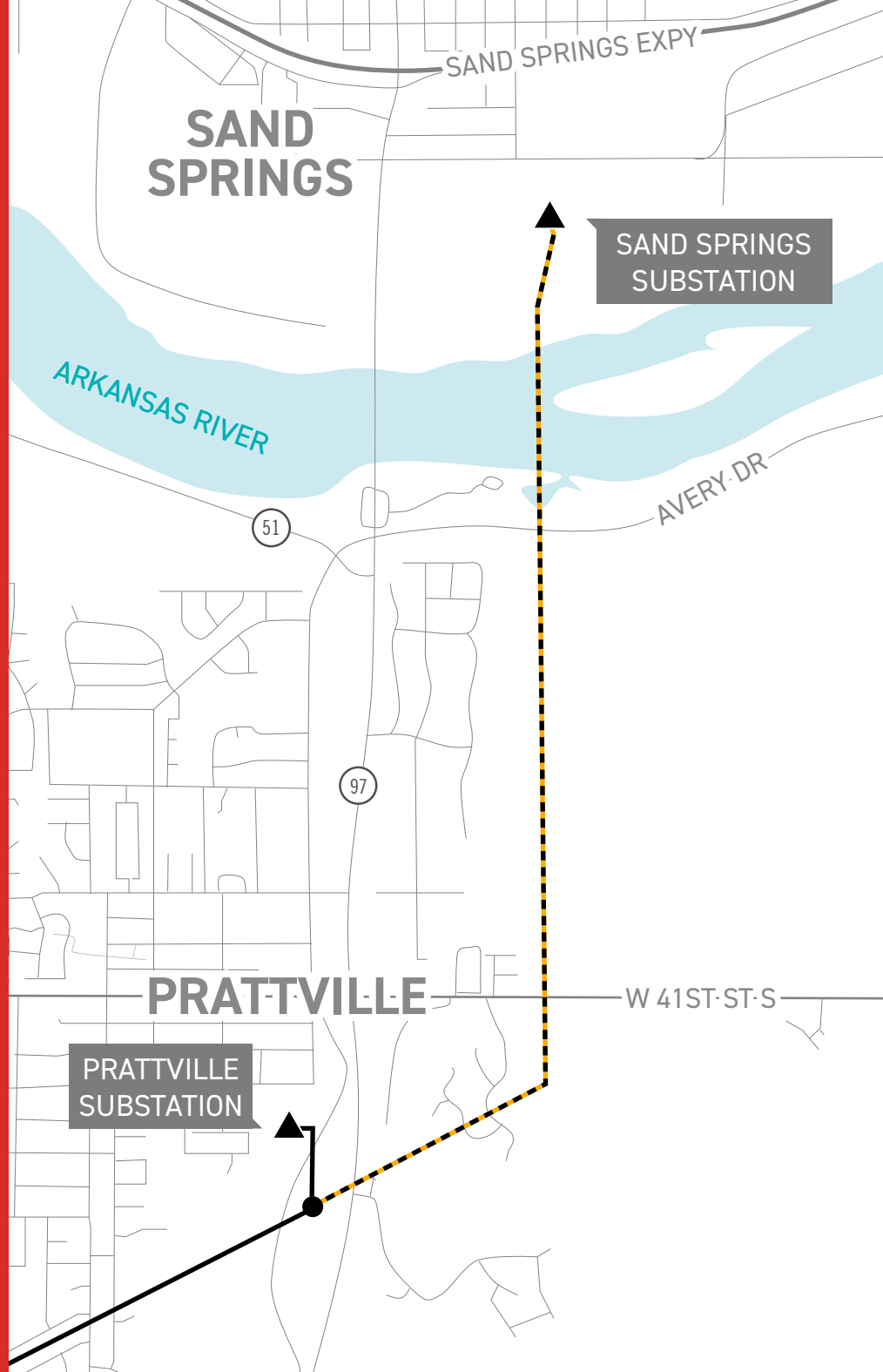
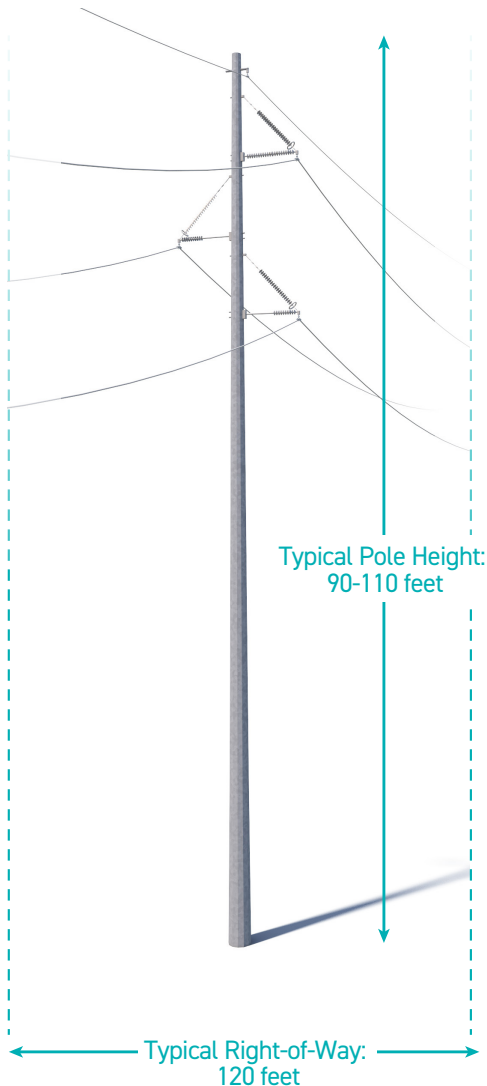
The project involves installing steel poles.

Typical Pole Height: 90-110 feet

Typical Right-of-Way: 120 feet

Typical Distance between Structures: 600 feet

\*Exact structure, height and right-of-way requirements may vary



### PRATTVILLE - SAND SPRINGS TRANSMISSION LINE REBUILD PROJECT

— TRANSMISSION LINE TO BE REBUILT

● BEGINNING OF LINE REBUILD

▲ SUBSTATIONS



PSO VALUES YOUR INPUT ABOUT THIS PROJECT. PLEASE SEND COMMENTS AND QUESTIONS TO:

### MICHAEL HARRIS

AEP Project Outreach Specialist

918-599-2553

mhharris@aep.com

[www.PSOklahoma.com/Prattville-SandSprings](http://www.PSOklahoma.com/Prattville-SandSprings)

**PUBLIC SERVICE  
COMPANY OF  
OKLAHOMA**

An AEP Company

BOUNDLESS ENERGY™

05/04/2021