

LAWTON - SOUTHWESTERN POWER STATION TRANSMISSION LINE REBUILD PROJECT

Public Service Company of Oklahoma (PSO) representatives plan to improve the electric transmission system in Comanche and Caddo counties. The Lawton - Southwestern Power Station Transmission Line Rebuild Project involves rebuilding about 36 miles of transmission line to increase electric reliability and strengthen the local power grid.

WHAT

The project involves rebuilding the 138-kilovolt Lawton Eastside - Southwestern Power Station transmission line and making minor upgrades to the Lawton Eastside Substation.

WHY

The project:

- Replaces aging wooden poles from the early 1960s with steel poles
- Strengthens the line against severe weather impacts
- Improves reliability by decreasing the likelihood of large, community-wide power outages

WHERE

The transmission line extends about 36 miles between the Lawton Eastside Substation in east Lawton and the Southwestern Power Station in Washita.

The project area includes:

- City of Lawton
- City of Elgin
- City of Washita
- Comanche County
- Caddo County

**PROJECT ANNOUNCEMENT
& RIGHT-OF-WAY
COMMUNICATIONS BEGIN**
Early 2023

2023

2024

2025

**CONSTRUCTION
BEGINS**
Fall 2025

2026

2027

**PRE-CONSTRUCTION
ACTIVITIES BEGIN**
Early Fall 2025

**FACILITIES PLACED
IN SERVICE AND
RESTORATION
ACTIVITIES BEGIN**
Early 2026

Timeline subject to change.

TYPICAL STRUCTURES

PSO crews plan to rebuild the line using steel single poles.

Typical Structure Height:

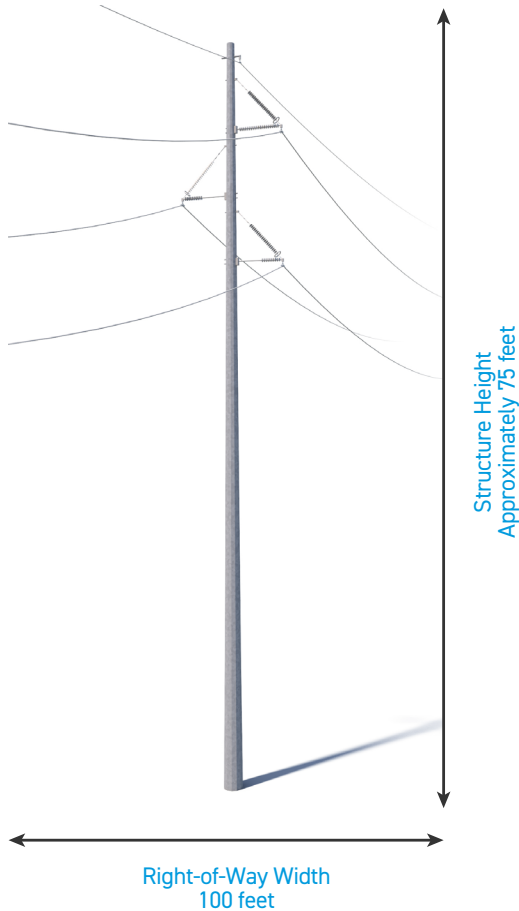
Approximately 75 feet*

Typical Distance Between Structures:

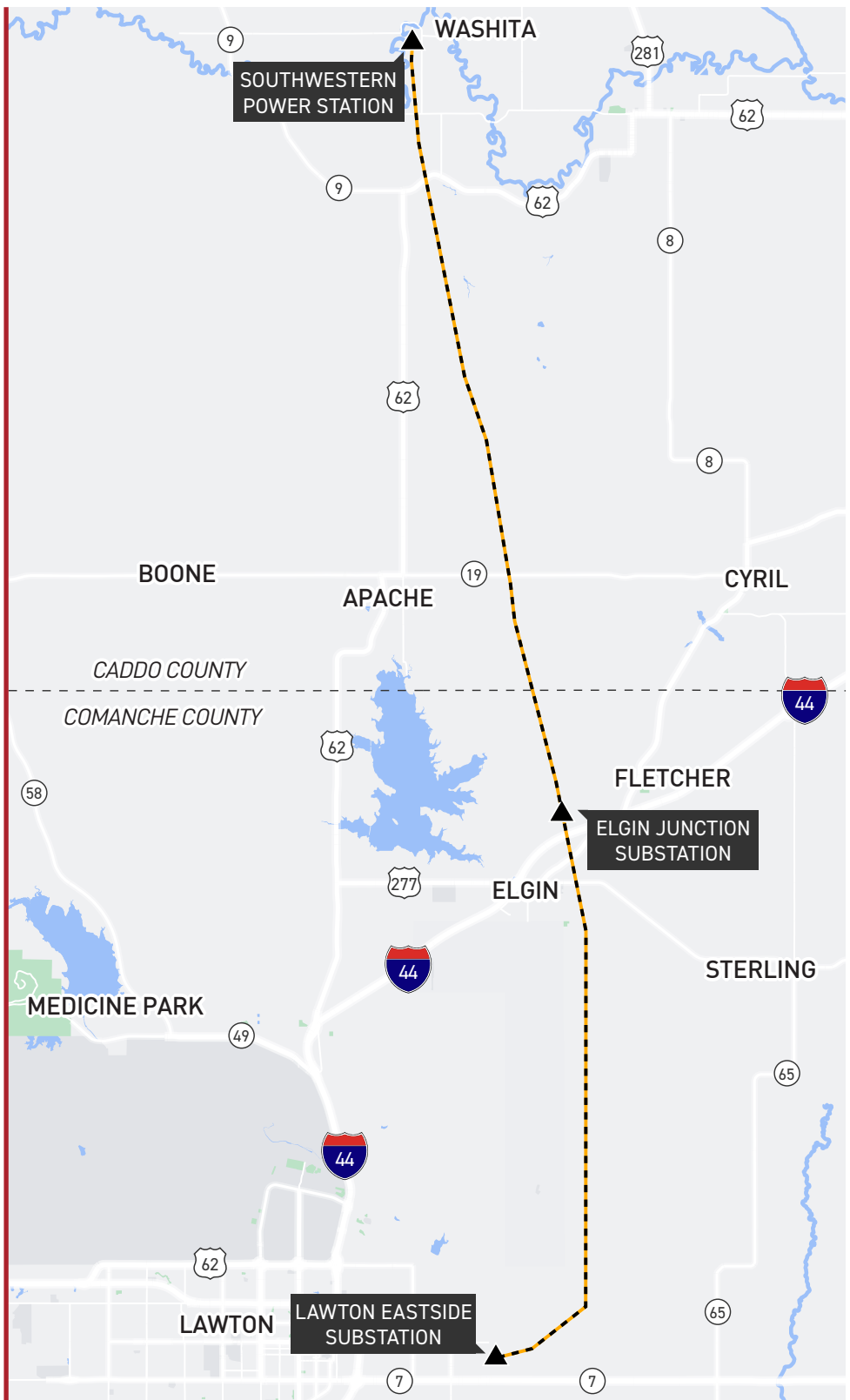
Approximately 650 feet*

Typical Right-of-Way Width:

100 feet



*Exact structure, height, and right-of-way requirements may vary.



LAWTON - SOUTHWESTERN POWER STATION TRANSMISSION LINE REBUILD PROJECT

- TRANSMISSION LINE TO BE REBUILT
- ▲ EXISTING SUBSTATION

WE VALUE YOUR INPUT. PLEASE SEND COMMENTS AND QUESTIONS TO:

MATT HAMES • PROJECT OUTREACH SPECIALIST

MCHAMES@AEP.COM • 918-237-6736

PSOKLAHOMA.COM/LAWTON-SWPS

**PUBLIC SERVICE
COMPANY OF
OKLAHOMA**
An AEP Company

07/09/2025