

STILLWELL-JELLOWAY-LOUDONVILLE TRANSMISSION PROJECT

AEP Ohio representatives plan to upgrade the local power grid to improve electric reliability for customers in Holmes, Knox and Ashland counties.

Construction plans include building a new substation, building new transmission power lines, upgrading existing power lines and connecting to area distribution lines in approximately 60-80-foot-wide right-of-way corridors. This will require that company representatives acquire new land easements to ensure the safe construction, operation and maintenance of the line.

WHAT THE PROJECT INVOLVES

- Building Ravin Substation off Jelloway Road in Jefferson Township, Knox County
- Connecting Jelloway Substation off College Hill Road to a power line between Ravin Substation and Loudonville Substation
- Building about 9 miles of 69-kilovolt (kV) power line between Ravin Substation and Stillwell Substation in Holmes and Knox counties
- Building about 8 miles of 69-kV power line between Ravin and Loudonville substations in Knox and Ashland counties

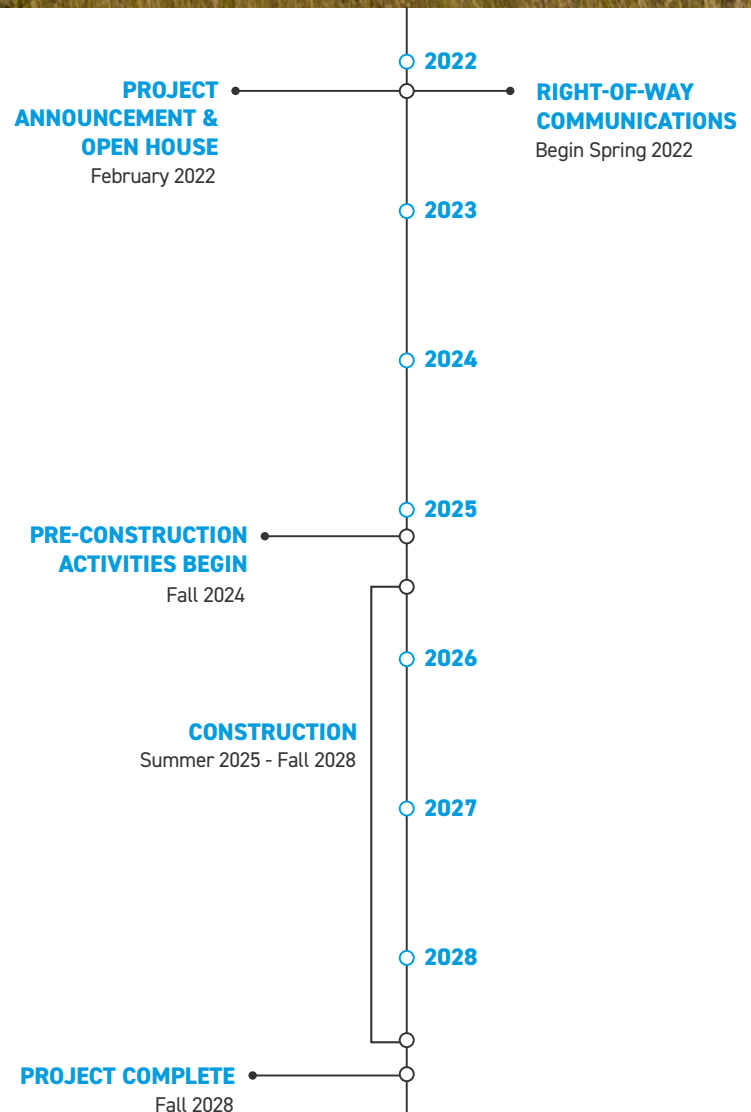
WHY

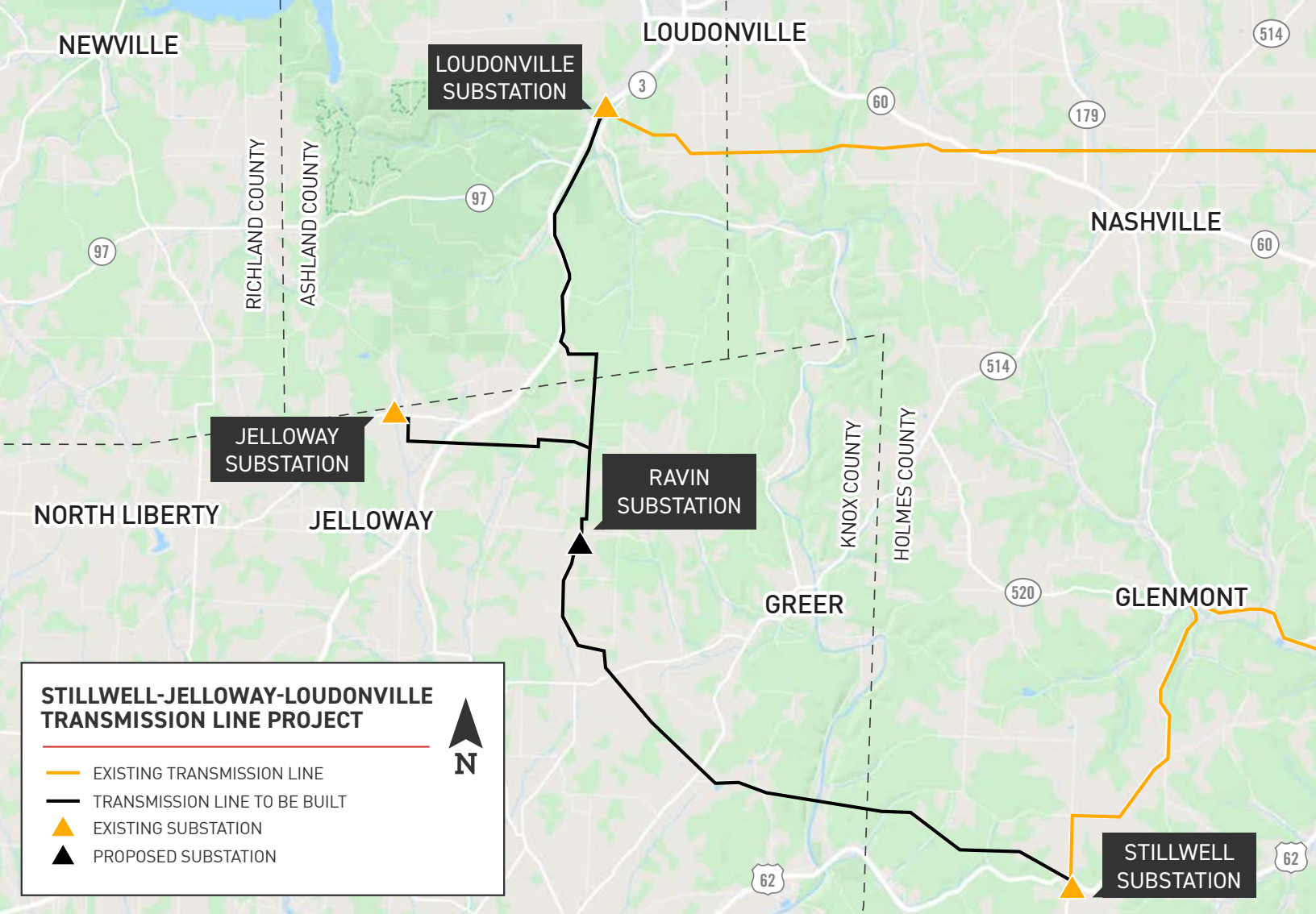
Benefits to the Community:

- The addition of a new substation provides an additional power source that strengthens the local electric power grid to enhance area reliability and reduce extended outages.
- The upgrades improve electric service reliability for Holmes-Wayne Electric Cooperative, The Energy Cooperative in Jefferson and Brown townships and Knox County.
- Upgrading and connecting area substations and lines improves recovery of service speed when outages occur.

WHERE

- Richland Township in Holmes County
- Jefferson and Brown townships in Knox County
- Hanover Township in Ashland County





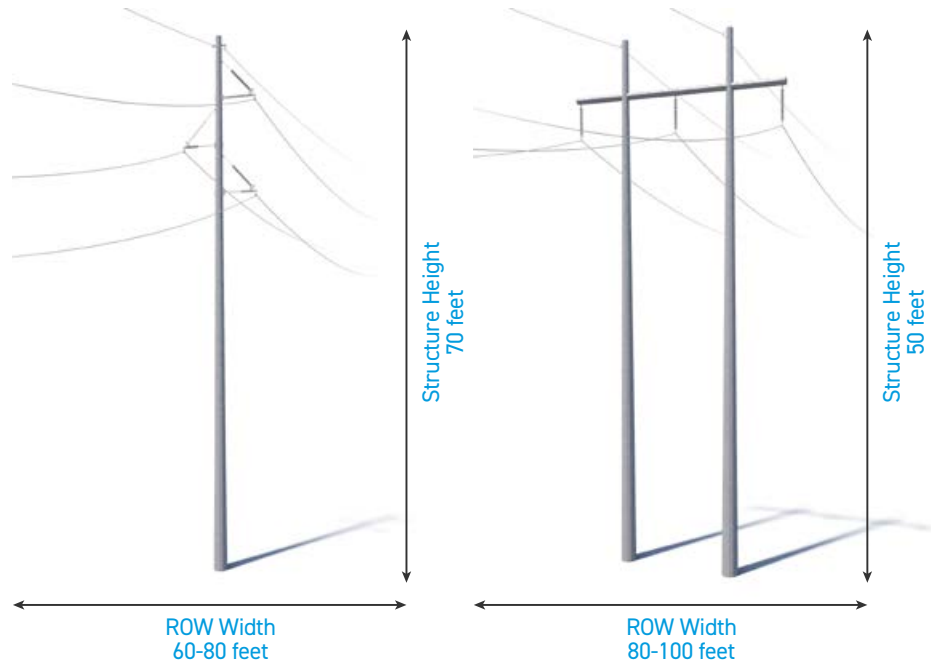
POLE STRUCTURES

The project involves the use of steel H-frame and single poles.

- Monopole:
- Structure Height: [Approximately 70 feet*](#)
 - Right-of-Way Width: [Approximately 60-80 feet*](#)

- H-Frame:
- Structure Height: [Approximately 50 feet*](#)
 - Right-of-Way Width: [Approximately 80-100 feet*](#)

Exact structure, height, and right-of-way requirements may vary.



WE VALUE YOUR INPUT. PLEASE SEND COMMENTS AND QUESTIONS TO:
 DARRYL JONES JR. • PROJECT OUTREACH SPECIALIST
 DJONESJR@AEP.COM • 614-933-2998
 AEPTRANSMISSION.COM/OHIO/STILLWELL

