

RARDEN-ROSEMOUNT

AREA IMPROVEMENTS PROJECT



AEP Ohio representatives plan to upgrade the electric transmission network serving customers in Adams and Scioto counties. The Rarden-Rosemount Area Improvements Project involves building approximately 25 miles of power line, building three new substations and expanding an existing substation.



WHAT

The project involves:

- Building approximately 25 miles of 69-kilovolt transmission line
- Building three new substations (Pipestone, McDermott and Otway) and a new Adams Co-op Tick Ridge Substation
- Expanding the Rarden Substation

WHY

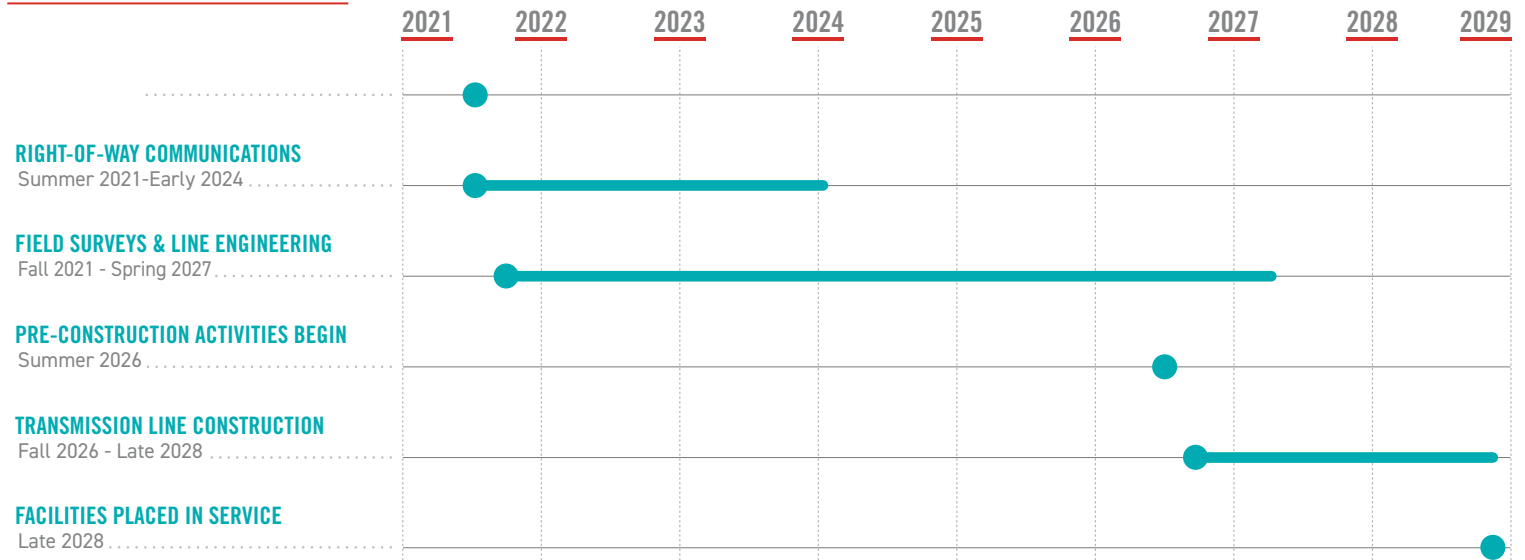
The area between Adams and Portsmouth experiences frequent power outages due to the hilly and remote terrain. The Rarden Substation currently receives power from a single source. The proposed 25-mile power line provides an additional source of electricity to the area. Creating a looped service adds redundancy, reducing power outages and speeding recovery of service when outages occur.

WHERE

Company representatives are evaluating power line route options in Adams and Scioto counties. Input from the community helps determine the location of the final line route.

The proposed transmission line begins at the Rarden Substation, located off State Route 73 in Peebles, and continues southeast to the proposed Bierly Substation, located off US 23 near Bierly Drive in Rosemount. The line connects an existing substation to three new substations along the proposed transmission line to the power grid.

PROJECT SCHEDULE



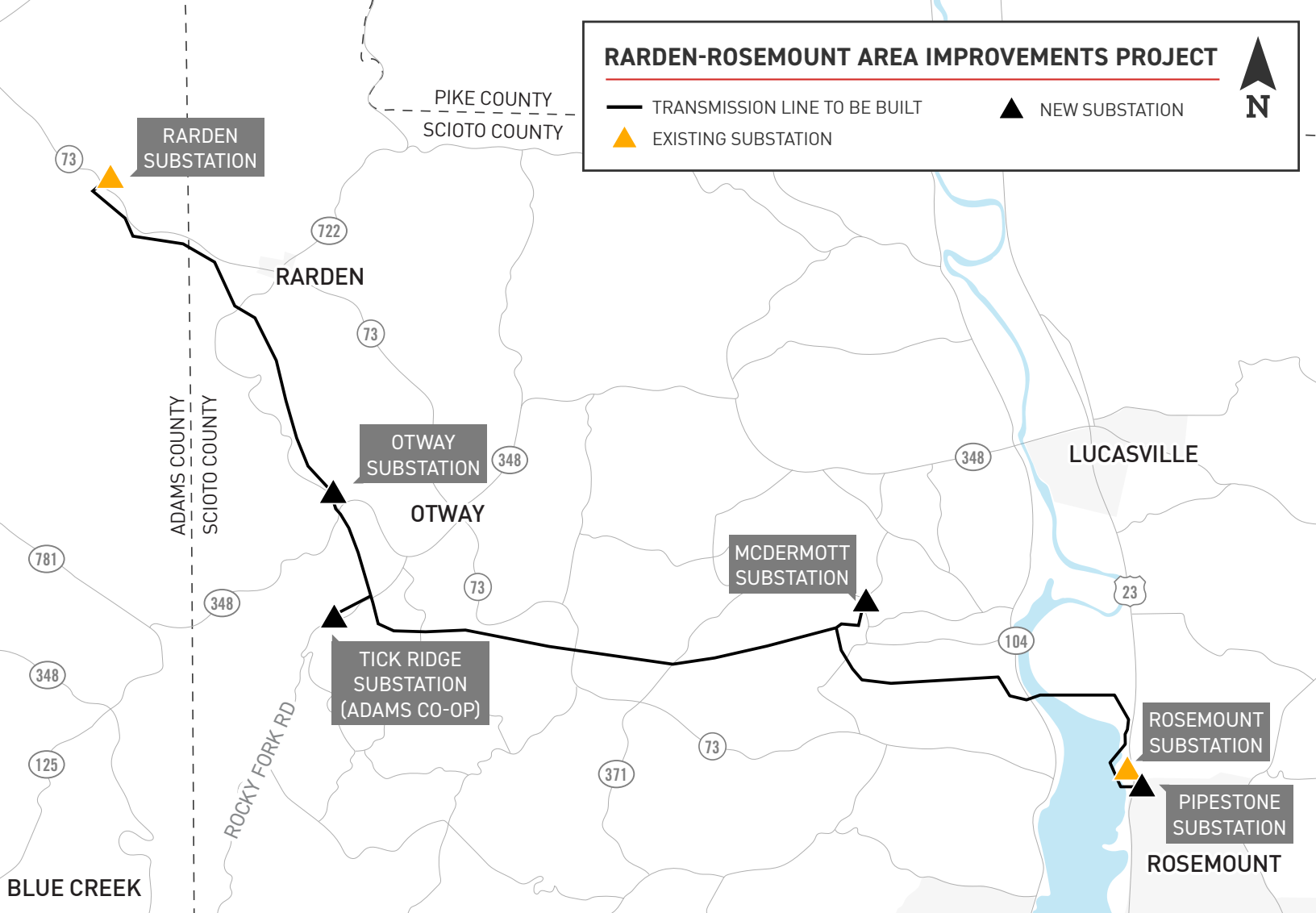
*Timeline subject to change.

RARDEN-ROSEMOUNT AREA IMPROVEMENTS PROJECT

— TRANSMISSION LINE TO BE BUILT

▲ EXISTING SUBSTATION

▲ NEW SUBSTATION



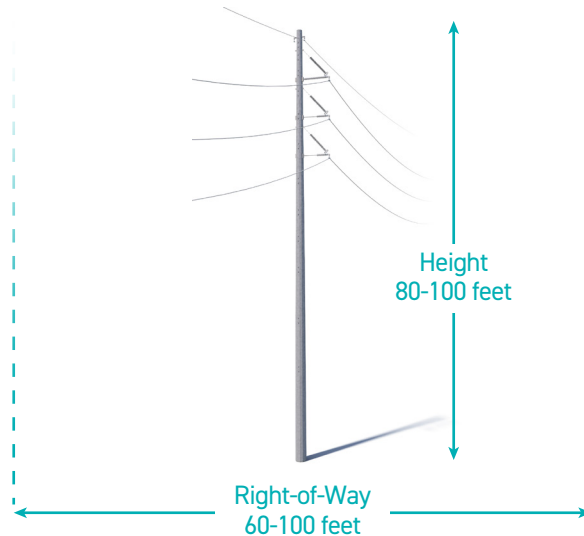
TYPICAL STRUCTURES

The project involves the use of single, steel poles.

Structure Height Range: 80-100 feet

Right-of-Way Width Range: 60-100 feet

*Exact structure, height and right-of-way requirements may vary



AEP OHIO VALUES YOUR INPUT ABOUT THIS PROJECT. PLEASE SEND COMMENTS AND QUESTIONS TO:

✉ AEP Ohio
c/o Maggie Beggs
8600 Smiths Mill Rd
New Albany OH 43054

✉ mrbeggs@aep.com
☎ 380-205-5178
➡ AEPOhio.com/Rarden-Rosemount

