

Lamping - Woodsfield Transmission Line

AEP Ohio representatives plan to upgrade the electric transmission network in Monroe County. The Lamping – Woodsfield Transmission Line Project involves building about 10 miles of 69-kilovolt (kV) transmission line and upgrading a substation to enhance service reliability in the area. Crews plan to begin construction in summer 2027 and conclude by summer 2028.

What

The project involves:

- Building 10 miles of 69-kV transmission line between the Lamping Substation, located along Floyd Hall Road in Graysville, and South Central Power's (SCP) Woodsfield Substation located along Cranes Nest Road in Woodsfield.
- Upgrading an existing substation.

Why

The project benefits:

- Strengthens service reliability for customers by providing an additional power source.
- Reduces the likelihood of power outages and improves restoration time if an outage does occur.
- Allows enhanced system flexibility when outages occur by providing a second power line to supply power.
- Services local electric companies and cooperatives, such as SCP and Woodsfield Municipal Electric, who receive power for their customers from AEP-owned transmission lines.

Where

The project area includes Washington, Perry, Wayne and Center townships in Monroe County.

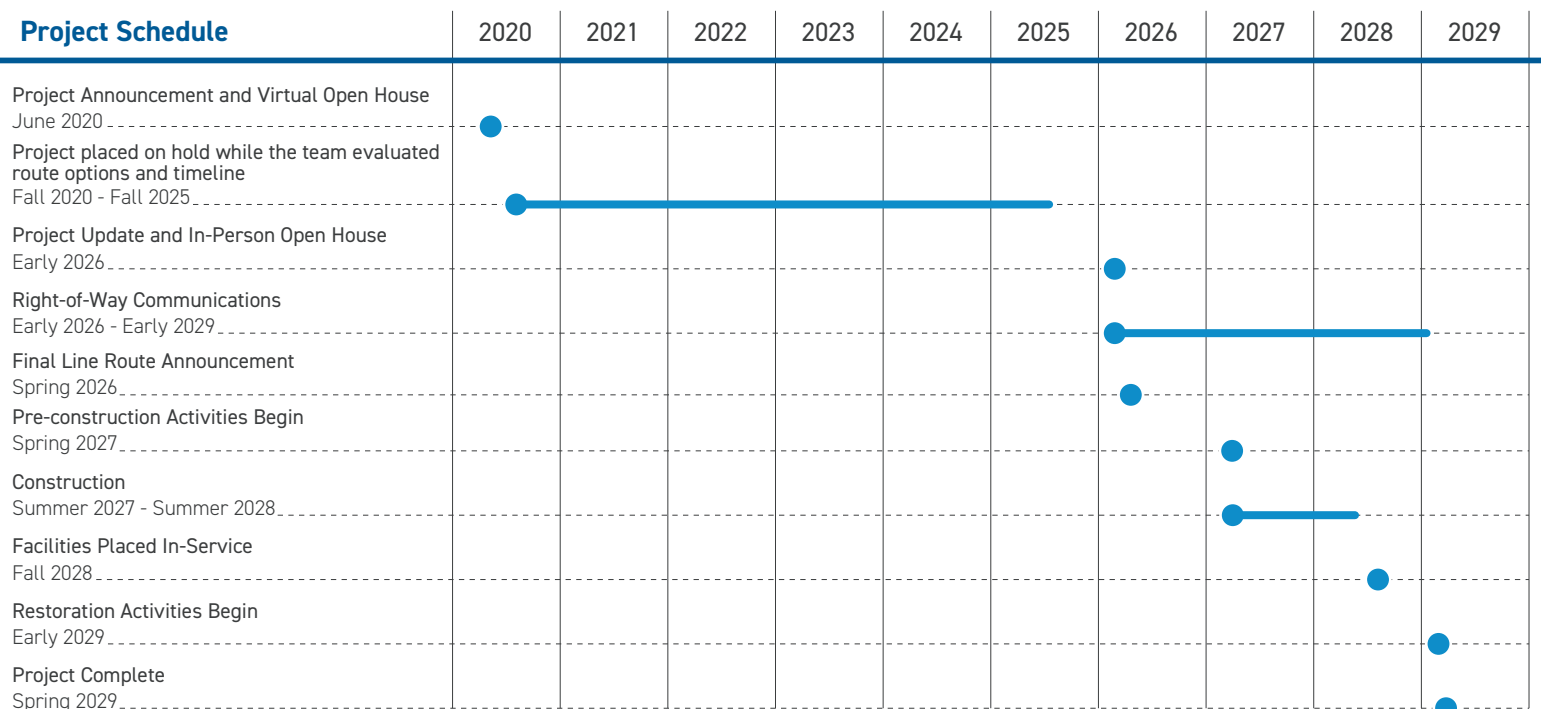
Before Construction

AEP Ohio right-of-way representatives plan to contact affected landowners regarding land surveys and other field work along the transmission line route and future construction access.

Some pre-construction activities include:

- Trimming or removing woody-stemmed vegetation.
- Installing temporary gates, fencing and access roads.

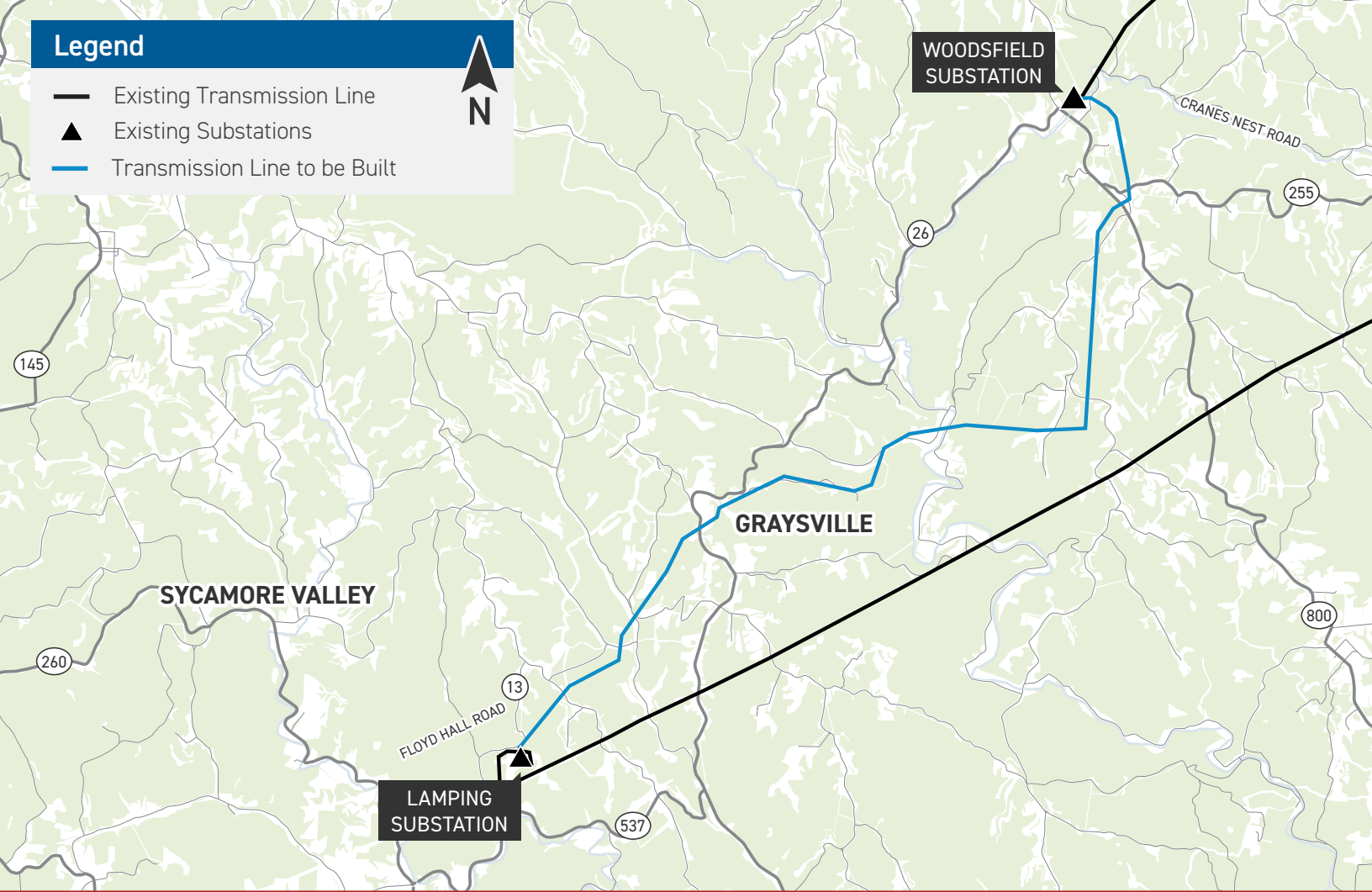
Project Schedule



*Timeline subject to change.

Legend

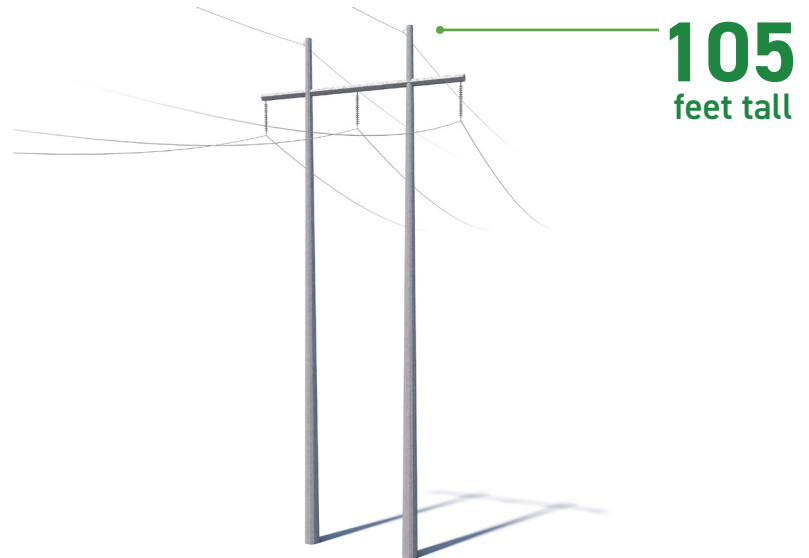
- Existing Transmission Line
- ▲ Existing Substations
- Transmission Line to be Built



Typical Structures

This project involves the use of steel H-frame structures.

Structure Height: Approximately 105 feet*
Right-of-Way Width: Approximately 100 feet*



**Exact structure, height, and right-of-way requirements may vary.*



We value your input. Please send comments and questions to:

Jasmine Anthony • Project Outreach Specialist
jasmine.anthony@jacobs.com • 614-512-2775

[AEPOhio.com/Lamping-Woodsfield](https://www.aepohio.com/Lamping-Woodsfield)

6/8/2026