

# JEROME EXTENSION PROJECT

AEP Ohio representatives plan power grid upgrades in Jerome Township. The project involves building Jerome Substation and about 1.5 miles of power line to provide power to a customer facility and help meet the area's growing electrical load demand.

## WHAT

This project involves:

- Building about 1.5 miles of 138-kilovolt (kV) transmission line between an existing power line and Jerome Substation
- Building Jerome Substation

\*This project requires Ohio Power Siting Board (OPSB) approval.

## WHY

The project provides power to Jerome Substation, which supplies power to a customer facility and helps meet the area's growing electrical load demand.

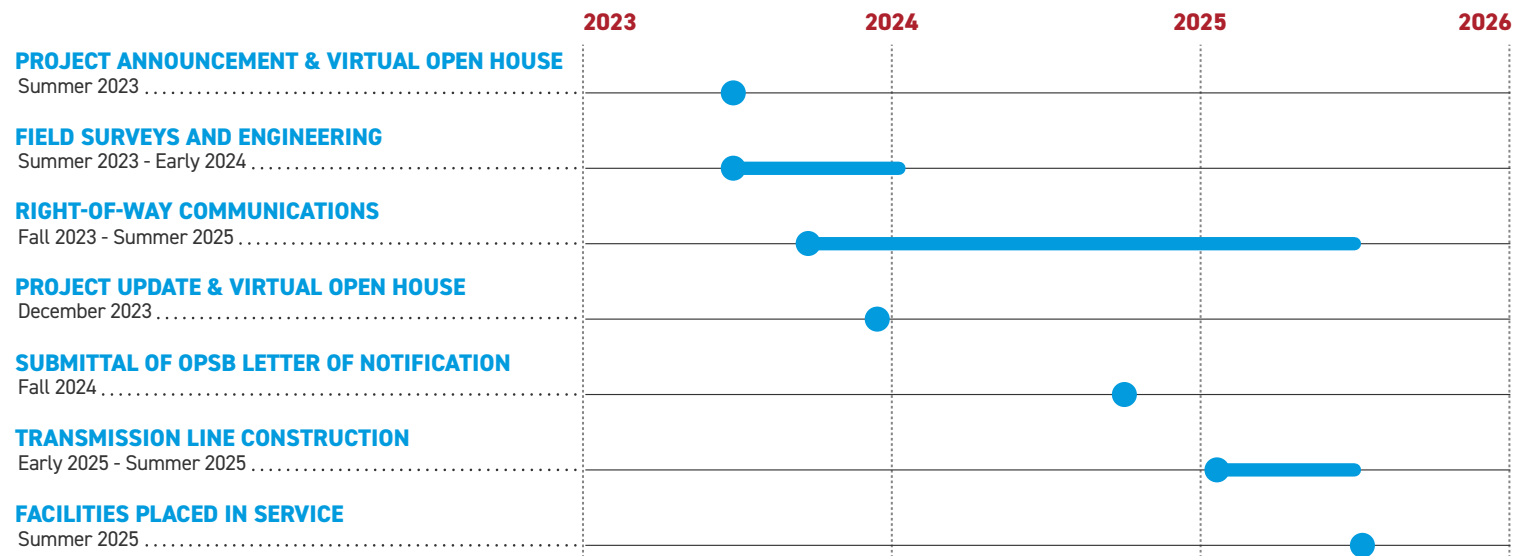
## WHERE

The project area includes Jerome Township, Union County.

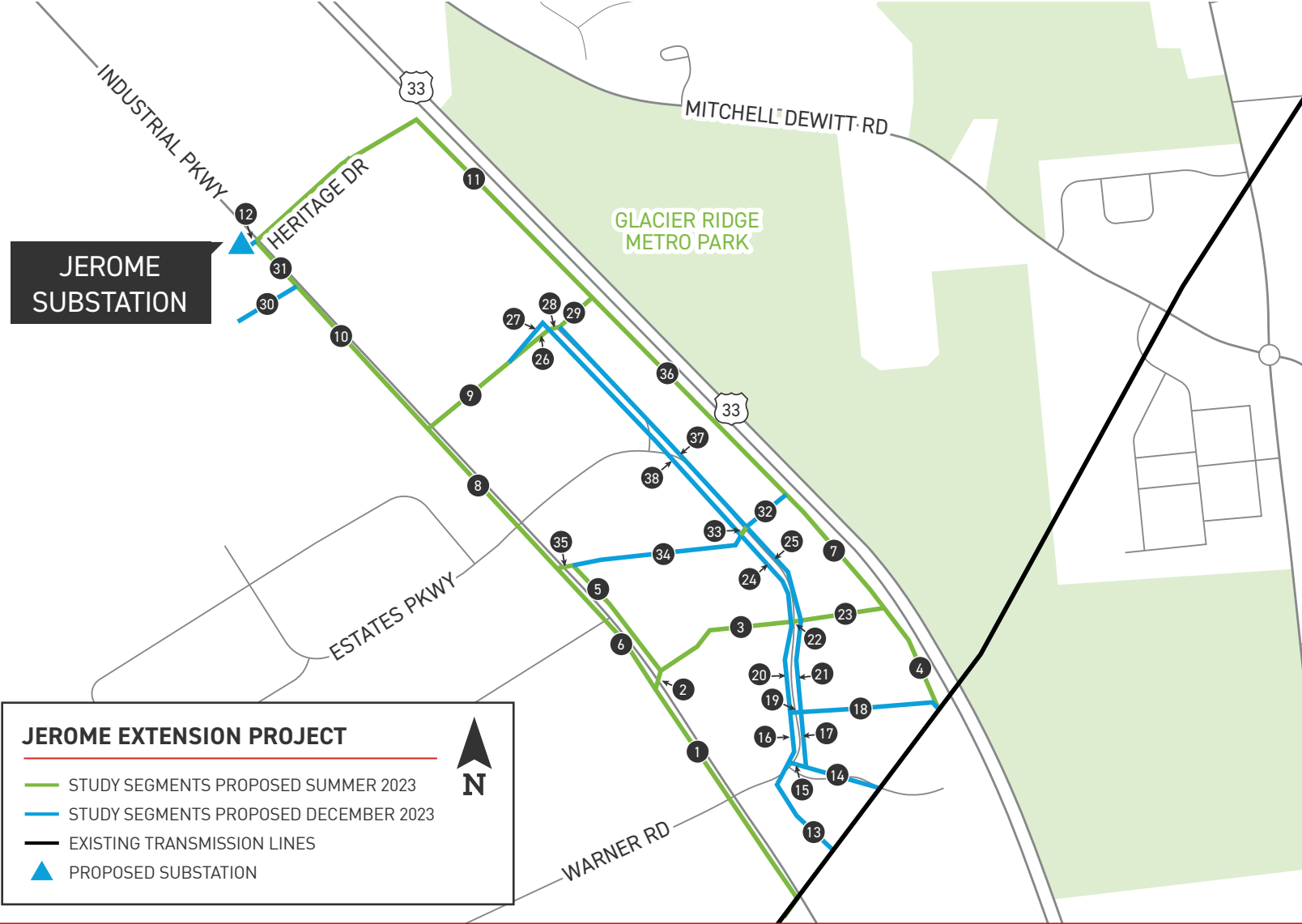
Company representatives plan to evaluate possible study segments\* to help determine the location of the new power line. Input from the community helps determine the location of the power line.

\*Study segments are various options presented to help decide the best route. Company representatives don't build all the segments. Instead, they pick one routes based on public feedback and feasibility.

## PROJECT SCHEDULE



\*Timeline subject to change.

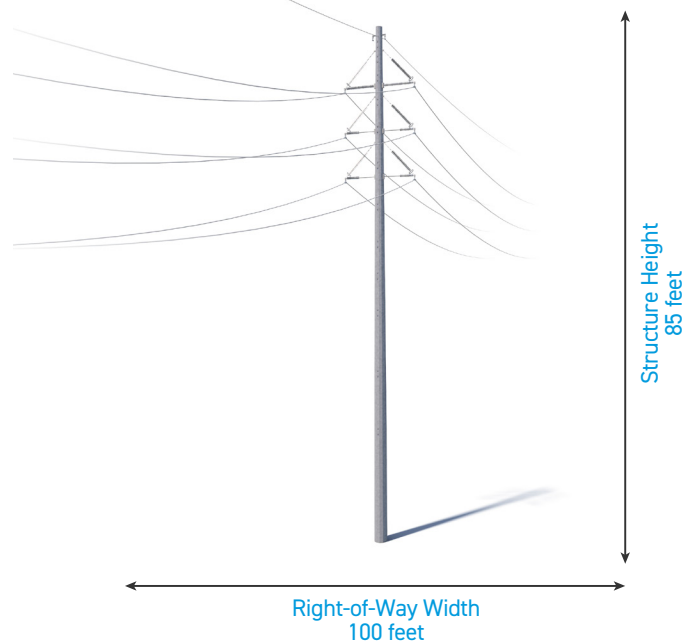


## TYPICAL STRUCTURES

The project involves the use of single steel poles.

Pole Height: 85 feet\*

Right-of-Way Width: 100 feet\*



\*Exact structure, height, and right-of-way requirements may vary.

\*\*Some structures will be custom steel poles

**WE VALUE YOUR INPUT. PLEASE SEND COMMENTS AND QUESTIONS TO:**

AEP OHIO OUTREACH TEAM

AEP OHIO\_OUTREACH@AEP.COM • 614-933-2998

AEP OHIO.COM/JEROMEEXTENSION