

CENTRAL FORT WAYNE TRANSMISSION IMPROVEMENTS PROJECT

Indiana Michigan Power (I&M) representatives plan power grid upgrades to improve electric reliability for customers in Fort Wayne. The Central Fort Wayne Transmission Improvements Project involves rebuilding about 1.5 miles of 69-kilovolt (kV) transmission line, relocating about 1 mile of 69-kV transmission line and upgrading equipment at three substations.

WHAT

The project involves:

- Upgrading equipment at Melita Substation, off Melita Street.
- Upgrading equipment at Fulton Substation, off West Superior Street.
- Upgrading equipment at Spy Run Substation, off Elizabeth Street.
- Rebuilding about 1.5 miles of 69-kV transmission line between Melita, Fulton and Spy Run substations.
- Relocating about 1 mile of 69-kV transmission line.

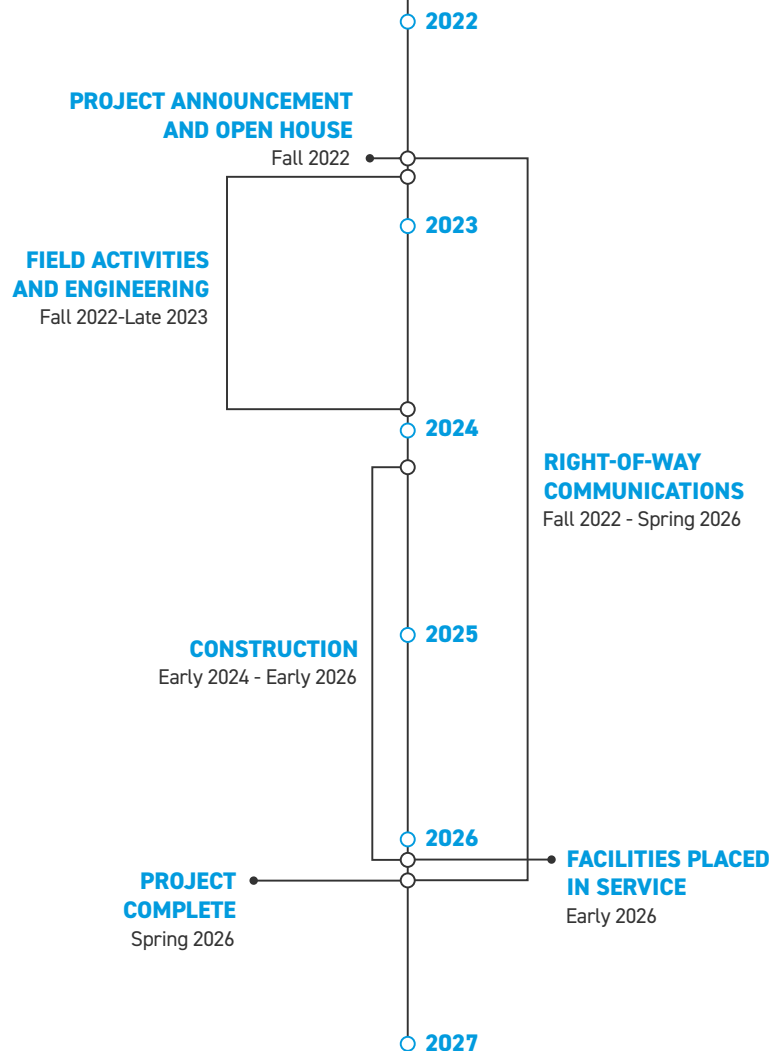
WHY

The 60-year-old transmission line consists of deteriorating wooden poles that no longer meet operational standards and requires updating. Rebuilding the line strengthens the local power grid and improves the line's operational performance by reducing the need for frequent maintenance. The upgrades reduce the likelihood of power outages and improve recovery of service in the event outages occur.

WHERE

The project area includes:

- Fort Wayne
- Wayne Township in Allen County



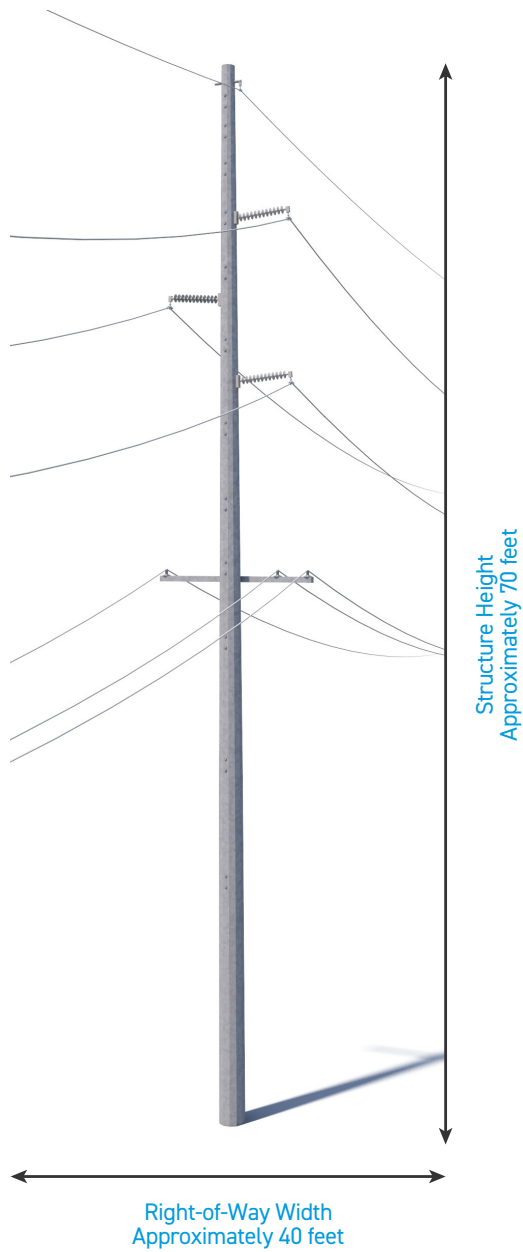
Timeline subject to change.

TYPICAL STRUCTURES

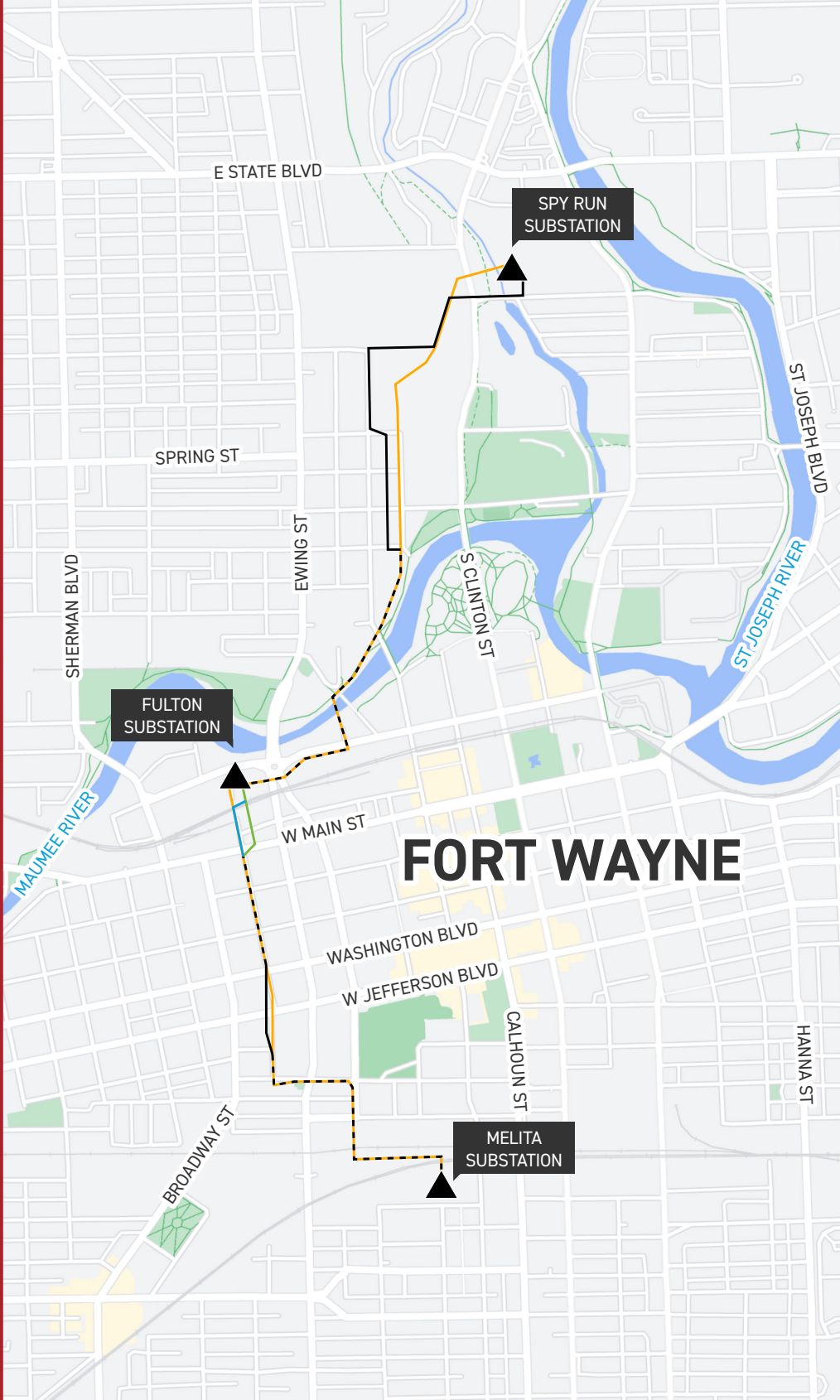
The project involves installing steel poles.

Typical Pole Height: Approximately 70 feet*

Typical Right-of-Way Width: Approximately 40 feet*



*Exact structure, height, and right-of-way requirements may vary.



CENTRAL FORT WAYNE TRANSMISSION IMPROVEMENTS PROJECT

- TRANSMISSION LINE TO BE REBUILT
- ROUTE OPTION 1
- EXISTING TRANSMISSION LINE
- TRANSMISSION LINE TO BE RELOCATED
- ROUTE OPTION 2
- ▲ EXISTING SUBSTATION TO BE UPGRADED



WE VALUE YOUR INPUT. PLEASE SEND COMMENTS AND QUESTIONS TO:

I&M OUTREACH TEAM

IM_OUTREACH@AEP.COM • 833-441-2260

INDIANAMICHIGANPOWER.COM/CENTRALFORTWAYNE

