

ANDERSON AREA IMPROVEMENTS PROJECT



Indiana Michigan Power (I&M) officials plan to upgrade the electric transmission network serving customers in Anderson, Indiana. The project involves upgrading about 4 miles of power line and upgrading a substation to increase electric reliability in the area.

WHAT

The project involves rebuilding about 4 miles of 138-kilovolt transmission line and upgrading a substation.

WHY

The existing transmission line consists of 60-year-old wooden poles that require frequent maintenance. An upgrade to modern steel poles reduces the need for ongoing power line maintenance and improves the line's operational performance. The planned substation upgrades also help to reduce the likelihood of extended power outages and speed recovery of service when outages occur.

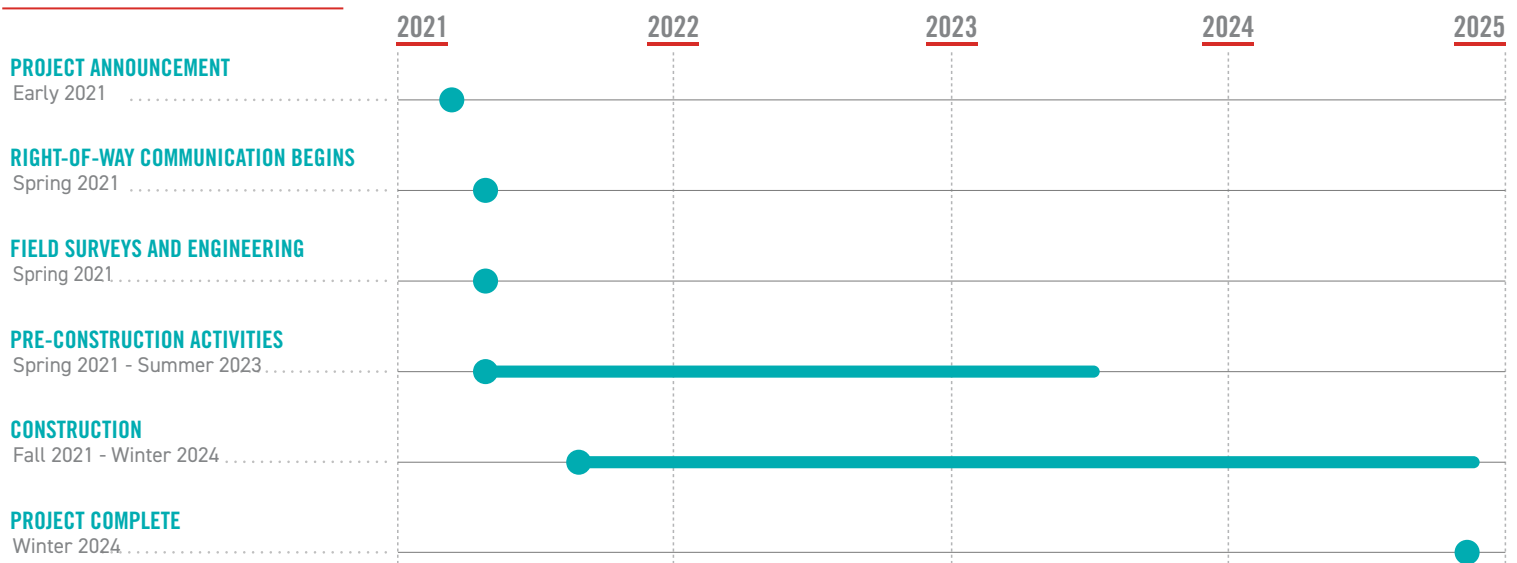
WHERE

The project area includes:

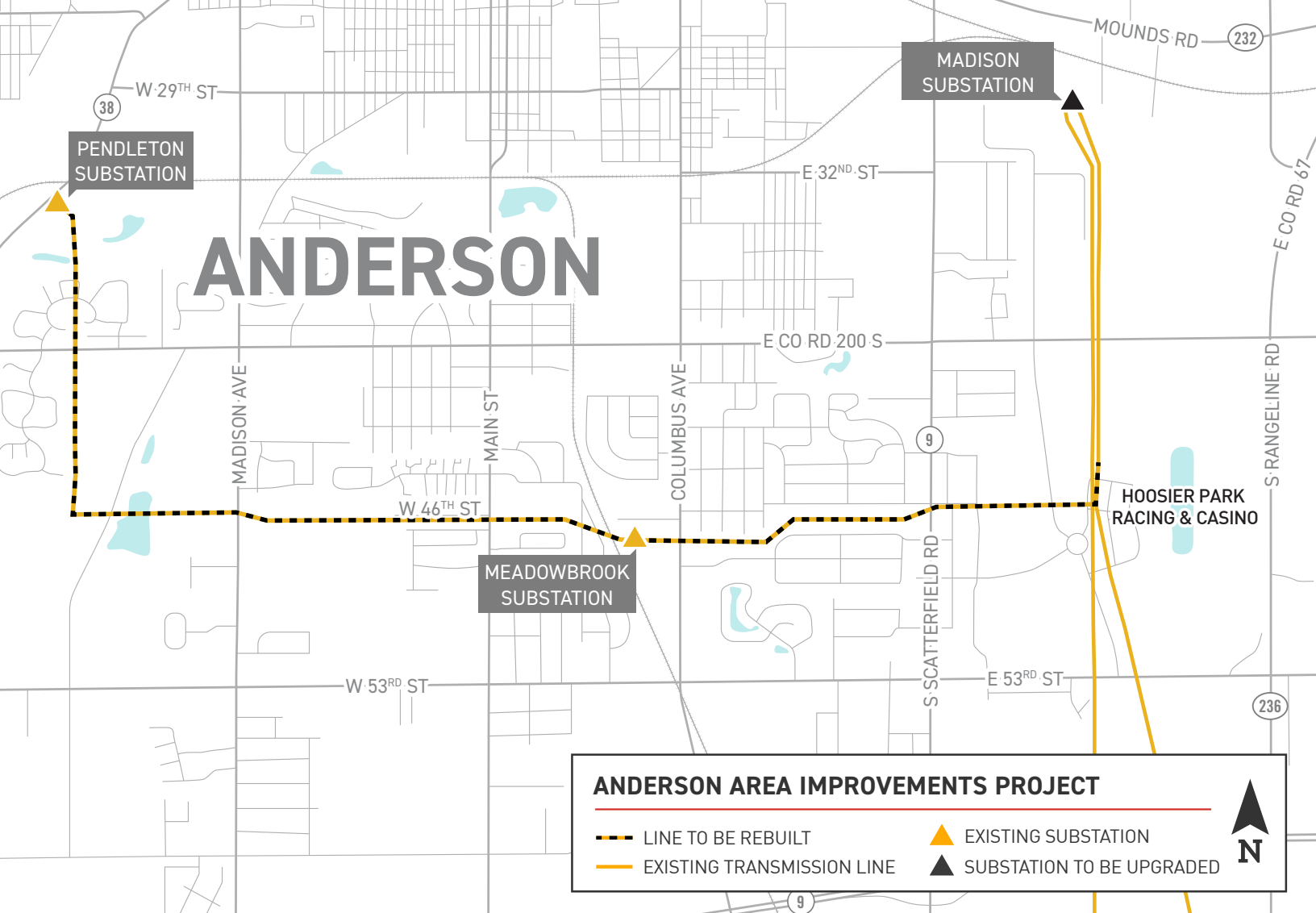
- City of Anderson
- Madison County



PROJECT SCHEDULE



*Timeline subject to change.

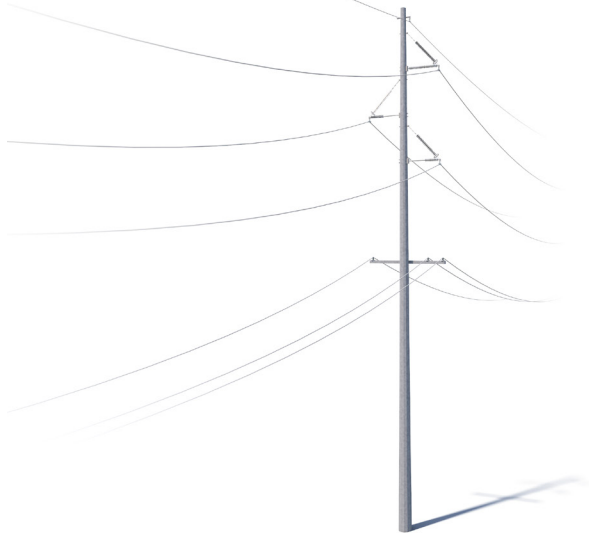


TYPICAL STRUCTURES

This project involves the use of single steel poles.

Average Structure Height: 70-100 feet*

Average Right-of-Way Width: 100 feet*



*Exact structure, height and right-of-way requirements may vary

I&M VALUES YOUR INPUT ABOUT THIS PROJECT. PLEASE SEND COMMENTS AND QUESTIONS TO:

I&M OUTREACH TEAM

IM_Outreach@aep.com

833-441-2260

www.indianamichiganpower.com/anderson

