

# Albion – South Goshen

## Transmission Line Rebuild Project



An AEP Company

BOUNDLESS ENERGY™

Indiana Michigan Power (I&M) is upgrading the transmission infrastructure in northeast Indiana. Rebuilding the transmission line between Albion and Goshen is essential to ensure continued reliable power is available for local customers. The work will be done in two phases, Albion to Ligonier and then Ligonier to South Goshen.



### WHAT

I&M is rebuilding approximately 21 miles of 138-kilovolt transmission line and replacing existing lattice structures with steel monopoles and new wire of the same voltage. The new Charger Substation will also be constructed in Ligonier to support the area improvements.



### WHY

The existing infrastructure in the area has reached an age where it needs to be replaced. Proactively rebuilding the transmission line improves reliability for customers across the region by strengthening the grid. Enhancements reduce the possibility of outages and speeds recovery when outages do occur.



### WHERE

The transmission line located in Noble and Elkhart counties travels from the Albion area to south of the city of Goshen. The majority of the line will be rebuilt within the existing I&M right-of-way with a few minor deviations.



## Project Schedule\*

### PHASE 1: ALBION – LIGONIER

Project Announcement: Summer 2017  
Right-of-Way Activities: Summer 2017 – Early 2018  
Pre-Construction Activities: – Late 2017- Early 2018  
Transmission Line Construction: Early 2018 – Late 2018  
Facilities Placed In-Service: Spring 2019

### PHASE 2: LIGONIER – SOUTH GOSHEN

Project Announcement: Summer 2017  
Right-of-Way Activities: Summer 2017 - Early 2018  
Pre-Construction Activities: Late 2017 - Early 2018  
Transmission Line Construction: Early 2019 - Summer 2019  
Facilities Placed In-Service: Summer 2019

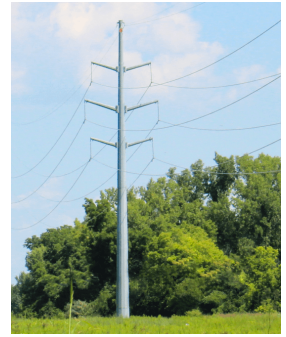
\*Project schedule is subject to change.

## Typical Structures\*

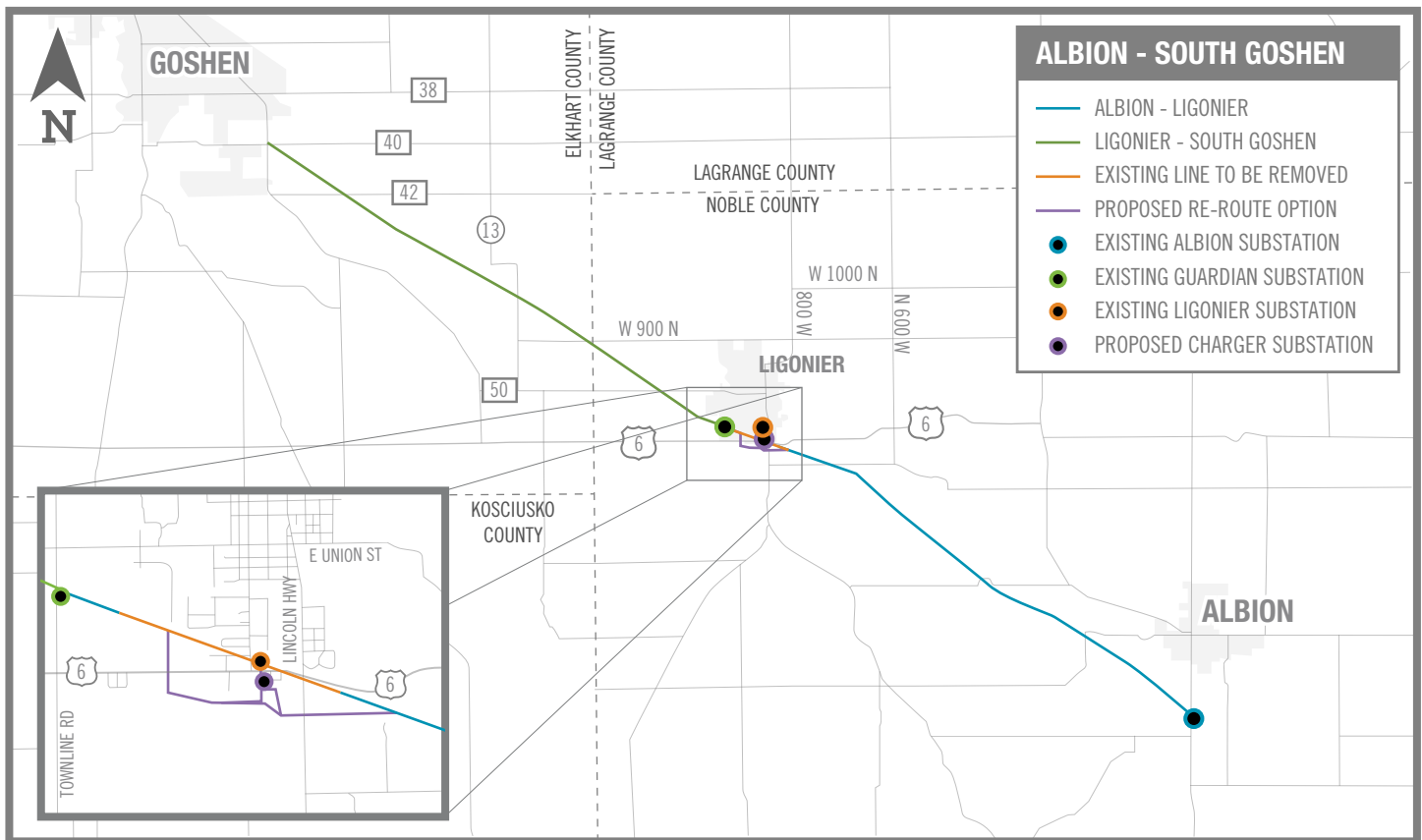
I&M will construct steel monopole structures ranging from approximately 100 to 150-feet high. The typical right-of-way will range from 100 to 130-feet wide.

I&M is committed to carefully balancing the energy needs of residential and business customers while protecting the environment and natural beauty of the region.

\*Exact structure, height and right-of-way may vary



## Project Map



I&M values your input about the project. Please send comments and questions to:

### Contact:

✉ Indiana Michigan Power  
c/o Scott Yarbrough  
P.O. Box 60  
Fort Wayne, IN 46801

✉ sayarbrough@aep.com

☎ (260) 466-7929

➔ [IndianaMichiganPower.com/Albion-SouthGoshen](https://www.IndianaMichiganPower.com/Albion-SouthGoshen)



An AEP Company

BOUNDLESS ENERGY™