

DIERKS-MENA TRANSMISSION IMPROVEMENTS PROJECT

Southwestern Electric Power Company (SWEPCO) representatives plan to upgrade the local electric system to enhance service reliability in Polk and Howard counties. Crews plan to start construction in fall 2024 and conclude in summer 2026.

WHAT

The project involves:

- Rebuilding and upgrading about 15 miles of 69-kV transmission line between the Dierks Substation in Dierks and the Mena Substation in southwest Mena
- Upgrading equipment at Mena Substation and various points along the line

WHY

Project benefits:

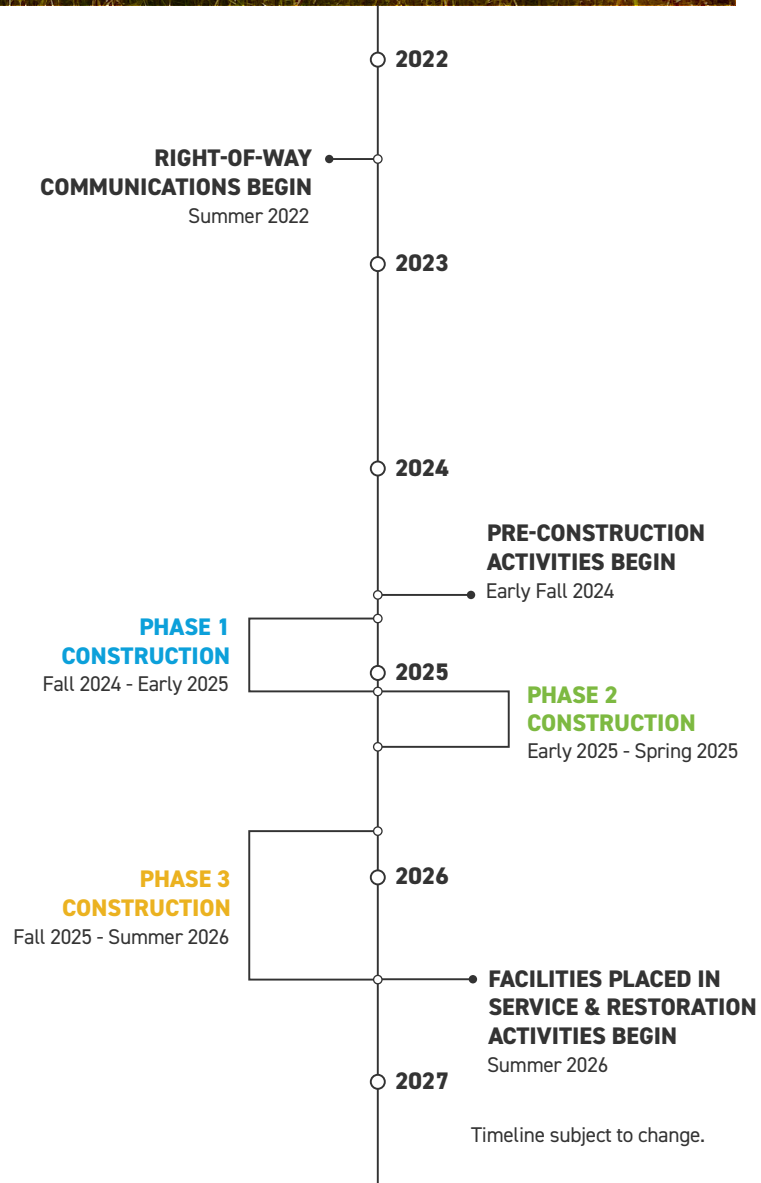
- Replaces wooden poles from the 1960s with steel poles to strengthen the line against severe weather impacts
- Upgrades substation and transmission line equipment to reduce maintenance frequency and decrease the likelihood of large, community-sustained power outages
- Enhances the local grid by upgrading line capacity

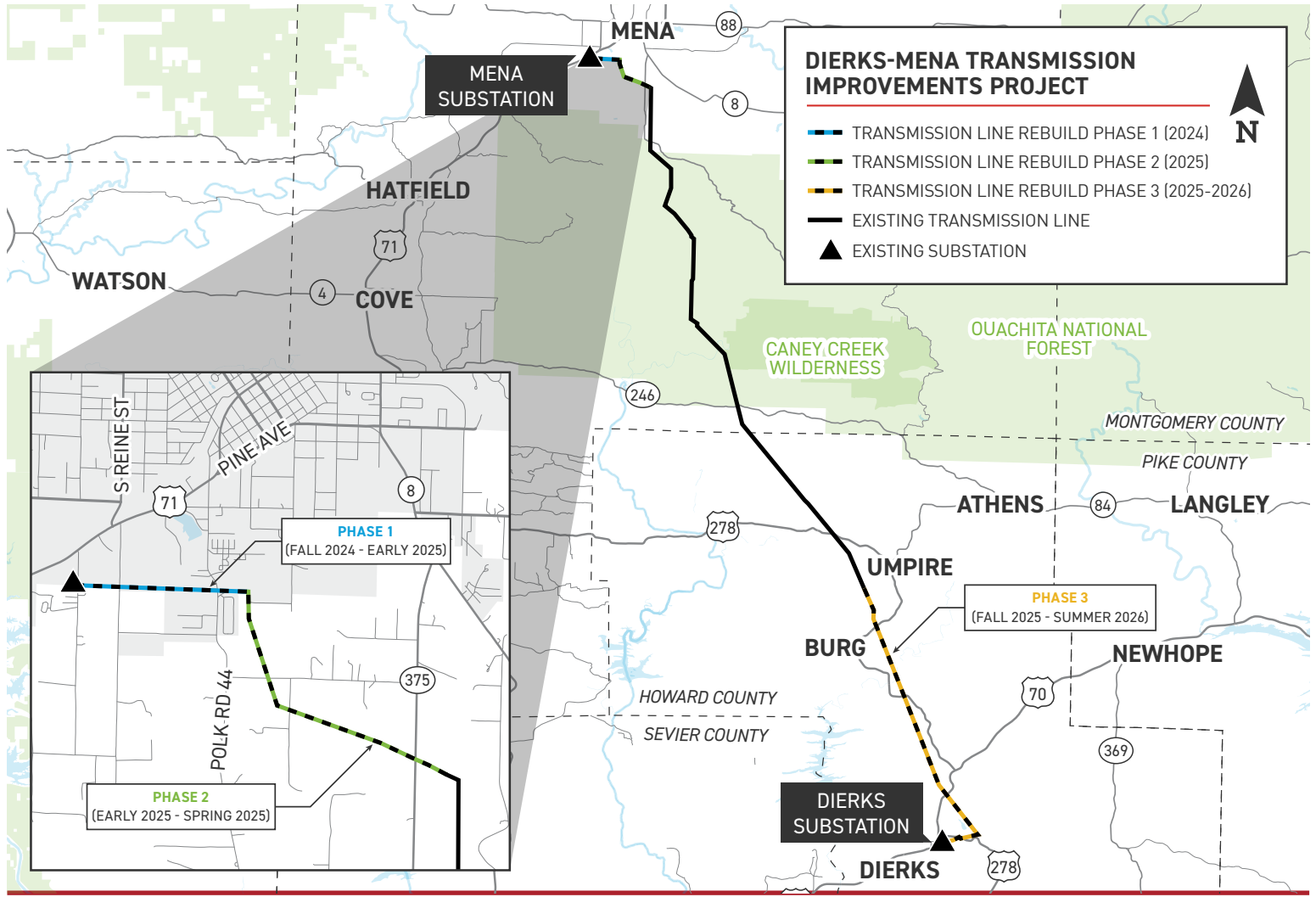
WHERE

- SWEPCO representatives plan to rebuild the Dierks Substation elsewhere in Dierks by the end of 2025 as part of a separate project, and its new location will be the end point of this transmission line rebuild project
- The Mena Substation is in southwest Mena off Fairgrounds Road

The project area includes:

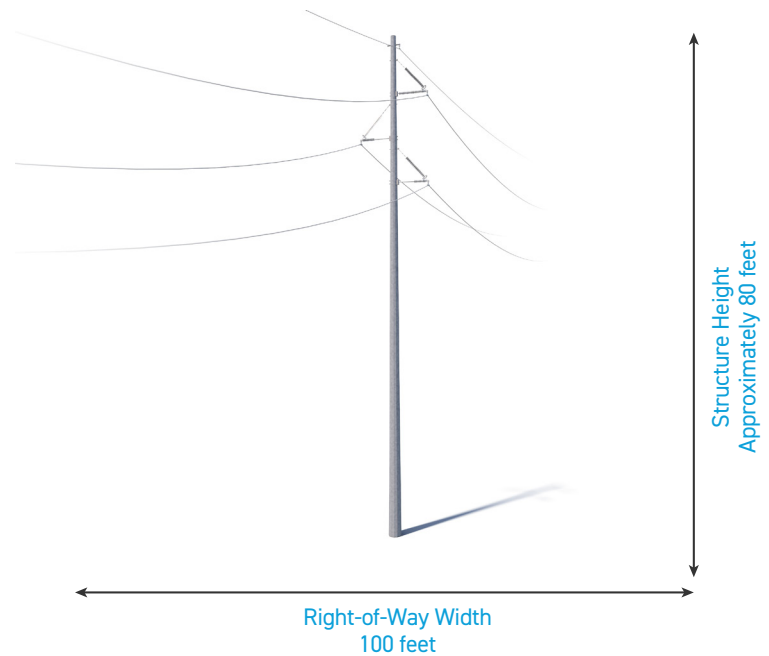
- City of Dierks
- City of Mena
- Howard County
- Polk County





TYPICAL STRUCTURES

- Typical Structure Height: [Approximately 80 feet](#)
- Typical Distance Between Structures: [Approximately 500 feet](#)
- Typical Right-of-Way Width: [100 feet](#)



*Exact structure height, type and configuration may vary.

WE VALUE YOUR INPUT. PLEASE SEND COMMENTS AND QUESTIONS TO:
 MATTHEW HAMES · PROJECT OUTREACH SPECIALIST
 MCHAMES@AEP.COM · 918-237-6736
 SWPCO.COM/DIERKS-MENA

