

BRANCH - NORTH MAGAZINE TRANSMISSION LINE REBUILD PROJECT

Southwestern Electric Power Company (SWEPCO) representatives plan to rebuild about 9 miles of electric transmission line in Logan County. This project strengthens the local electric system and provides more reliable service in western Arkansas. Crews plan to start construction in early 2027 and conclude in spring 2027.

WHAT

The project involves:

- Rebuilding about 9 miles of 161-kilovolt transmission line
- Making minor upgrades to area substations

WHY

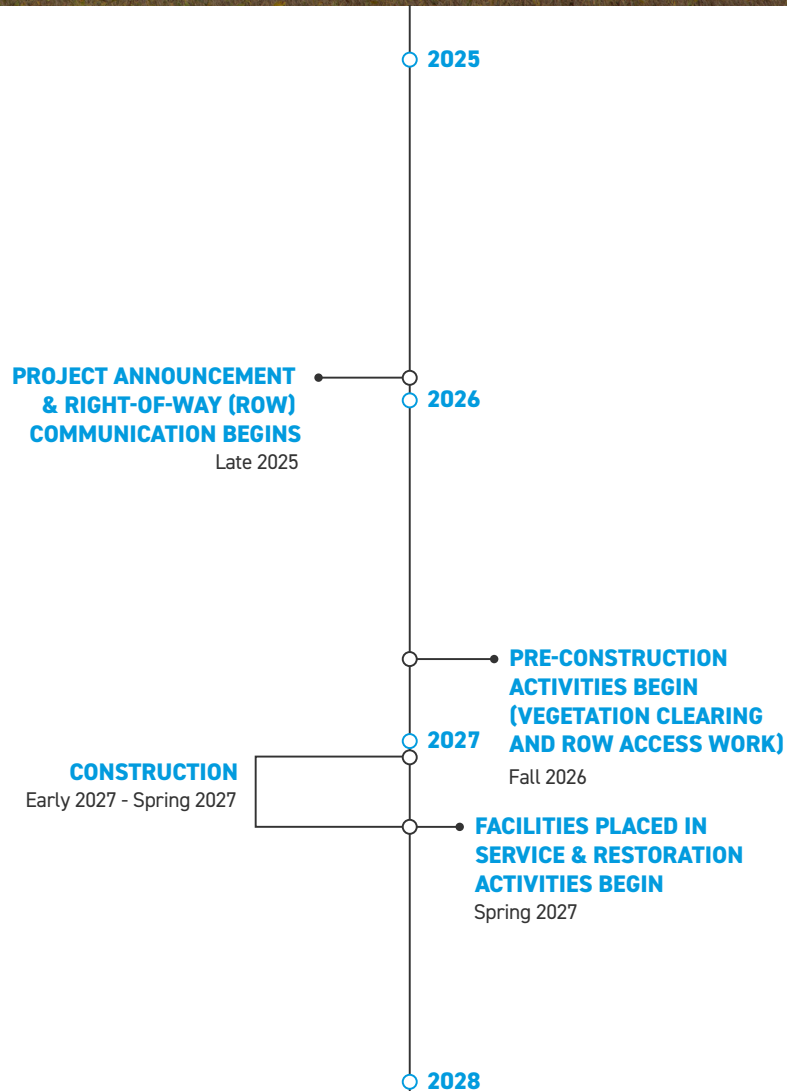
The existing Branch (OG&E) - North Magazine transmission line was built in 1942 and is past its planned service life.

The project:

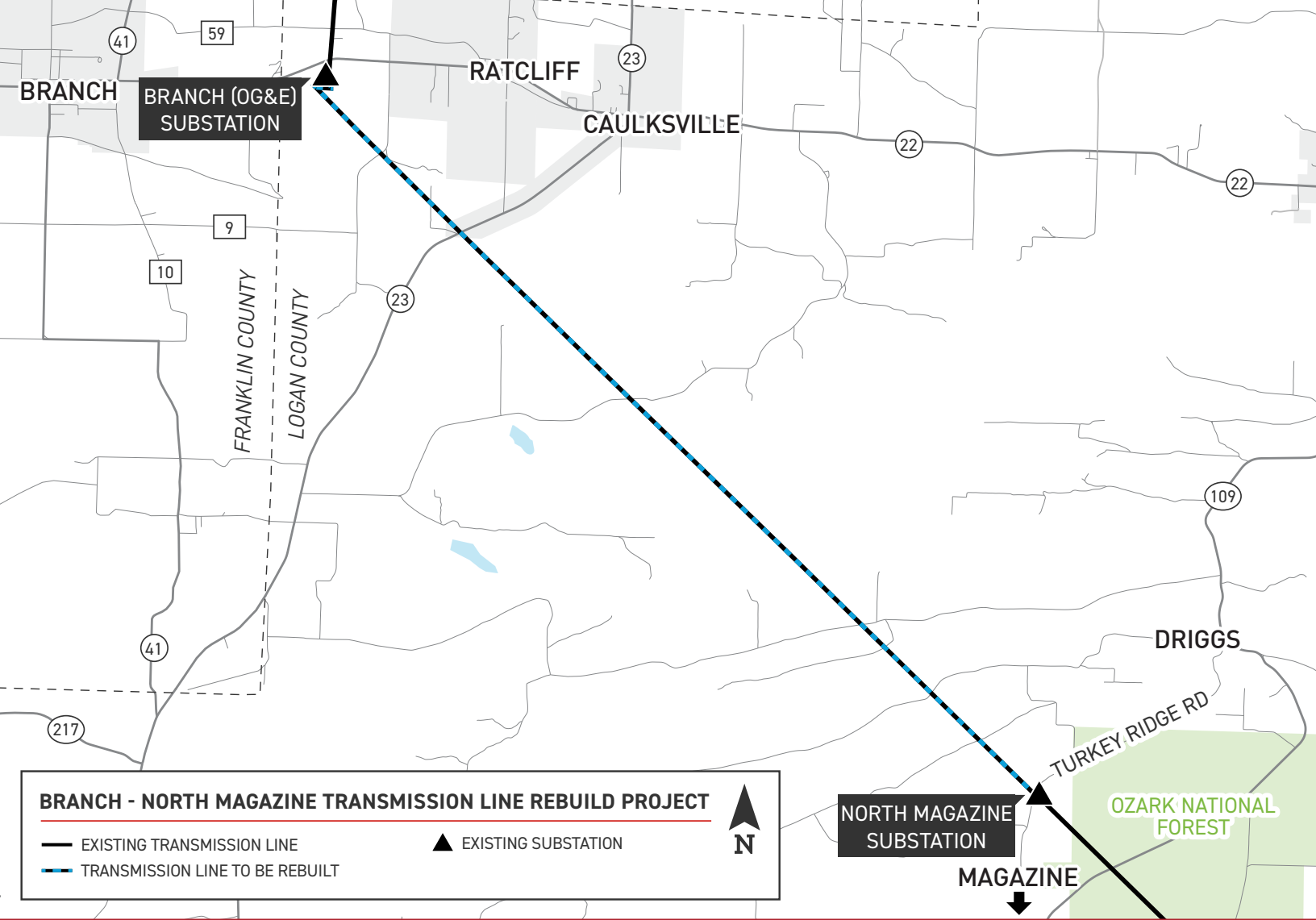
- Enhances electric reliability for customers and upgrades the local power grid
- Replaces deteriorating wooden poles with modern steel poles to strengthen the line against severe weather impacts and reduce frequent maintenance
- Upgrades aging equipment to reduce the likelihood of sustained, community-wide power outages

WHERE

The transmission line stretches between Oklahoma Gas & Electric Company's (OG&E) Branch Substation, located in northwest Logan County off State Highway 22, and SWEPCO's North Magazine Substation, located north of Magazine off Turkey Ridge Road.



Timeline subject to change.



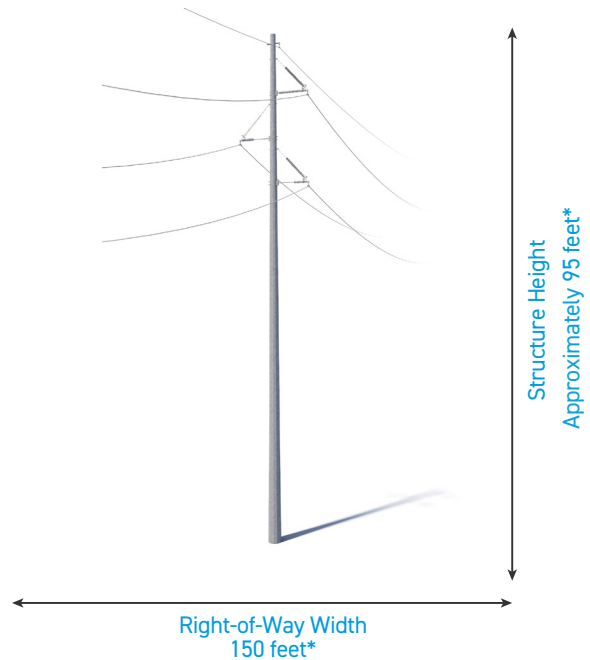
TYPICAL STRUCTURES

Crews plan to install steel single-pole structures.

Typical Structure Height: [Approximately 95 ft*](#)

Typical Distance Between Structures: [Approximately 670 ft*](#)

Typical ROW Width: [150 ft*](#)



*Exact structure, height, and right-of-way requirements may vary.

WE VALUE YOUR INPUT. PLEASE SEND COMMENTS AND QUESTIONS TO:
 MATT HAMES · PROJECT OUTREACH SPECIALIST
 MCHAMES@AEP.COM · 918-237-6736
 SWEPCO.COM/BRANCH-NORTHMAG

