

Howard-Solstice Transmission Line Project

AEP Texas and CPS Energy plan to strengthen the electric transmission system between Fort Stockton and San Antonio by building a 765-kilovolt (kV) power line.

What

The Howard-Solstice Transmission Line Project involves building a 370-mile 765-kV power line between Fort Stockton and San Antonio in partnership with CPS Energy.

AEP Texas officials plan to file a Certificate of Convenience and Necessity (CCN) application with the Public Utility Commission of Texas (PUCT) following a review of public input on route link development and additional route analysis. Project representatives expect to file a CCN application in early 2026. The PUCT determines the final line route.

Why

As a result of Texas House Bill 5066, the PUCT directed the Electric Reliability Council of Texas (ERCOT) to develop a reliability plan for the Permian Basin region.

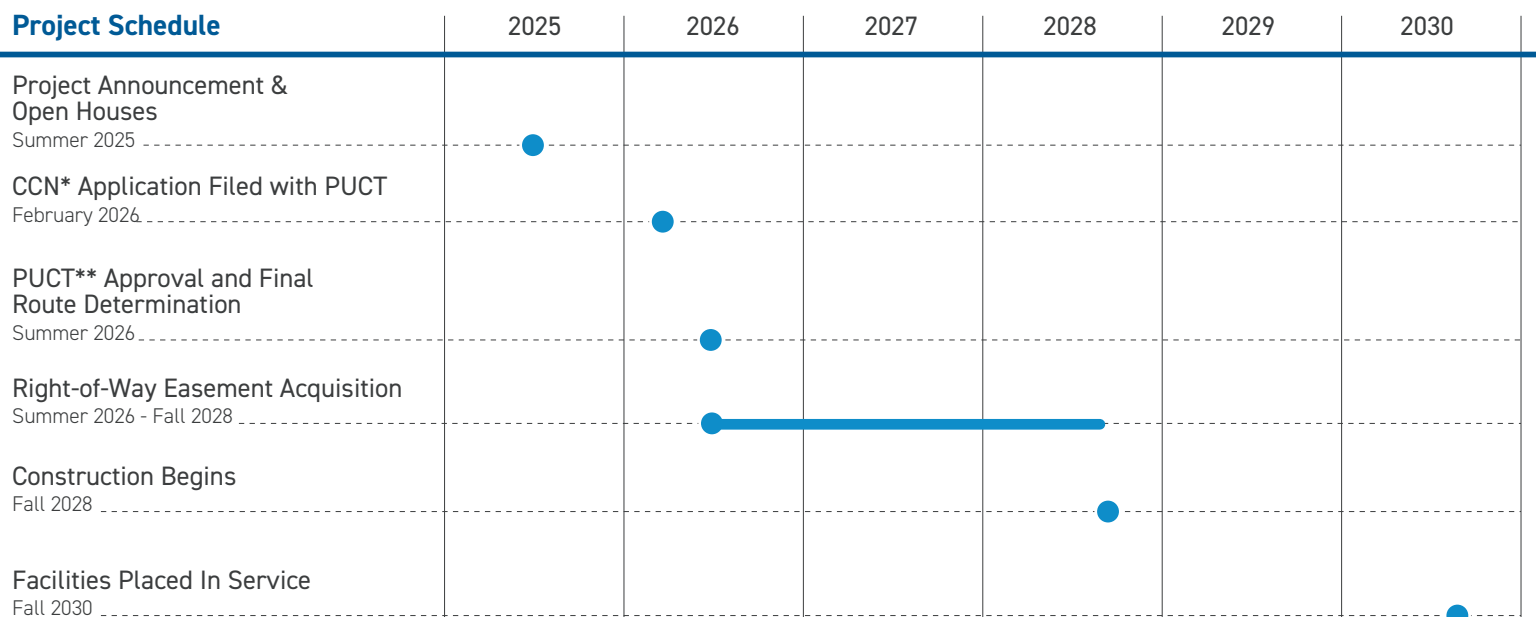
The Howard-Solstice Transmission Line Project is part of that reliability plan. The extra high-voltage transmission line will introduce a more efficient and reliable delivery system, creating additional opportunities for future growth throughout West Texas.

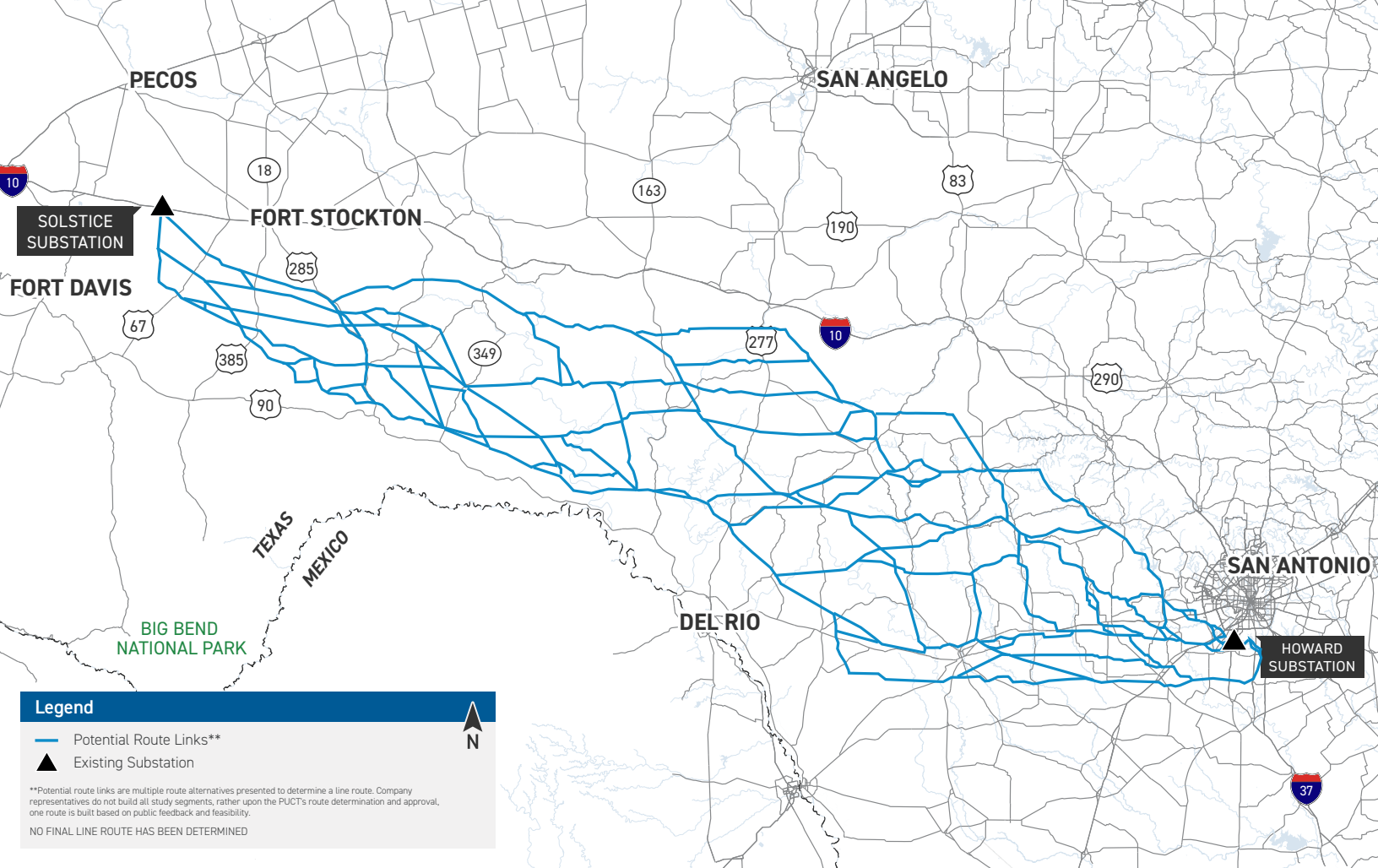
Where

The proposed line stretches between CPS Energy's Howard Substation, located in San Antonio, and AEP Texas' Solstice Substation in Fort Stockton

AEP Texas will construct, own, and operate the western half of the power line, and CPS Energy will construct, own, and operate the eastern half of the power line.

Project Schedule





Typical Structures

AEP Texas plans to install self-supporting lattice structures and guyed structures on the western half of the power line.

Typical Structure Height:

140-160 feet

Typical Right-of-Way Width:

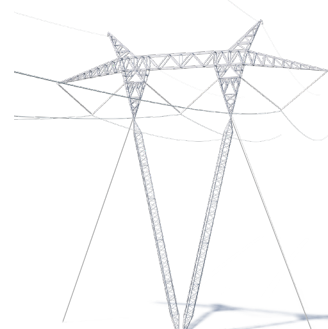
200 feet

Typical Distance Between Structures:

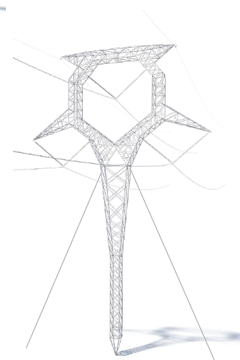
1,400 feet



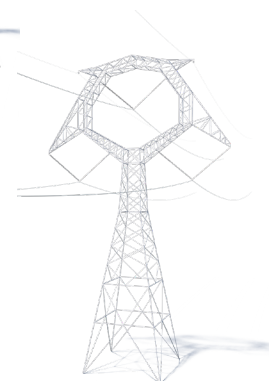
Lattice Tower



Guyed Vee



Guyed Suspension



New Self-Supporting

**Representative structures. The exact height and right-of-way requirements may vary based on geography and other factors.*



We value your input. Please send comments and questions to:
AEPTexasOutreach@AEP.com • 833-329-4865

[AEPTexas.com/Howard-Solstice](https://www.aep.com/Howard-Solstice)

07/23/2025