

DIANA-PLILER ROAD- WHITNEY TRANSMISSION IMPROVEMENTS PROJECT

Southwestern Electric Power Company (SWEPCO) officials plan to strengthen the electric grid in Harrison and Gregg counties by rebuilding about 22 miles of 138-kilovolt (kV) transmission line.

WHAT

The project involves:

- Rebuilding approximately 12 miles of 138-kilovolt (kV) transmission line from the Diana Substation near Kuykendall Road to the Pliler Substation near W. Pliler Precise Road
- Rebuilding approximately 10 miles of 138-kV transmission line from the Pliler Road Substation to the Whitney Substation near S. Martin Luther King Jr. Blvd.
- Rebuilding approximately .5 miles extending from the 138-kV transmission line to the Longview Heights Substation off Delia Drive.

WHY

The transmission line was constructed in 1952 and is past its planned service life. The project:

- Replaces deteriorating wooden poles with modern steel poles.
- Strengthens the regional system against severe weather impacts.
- Decreases the likelihood and duration of wide, community-sustained outages.

WHERE

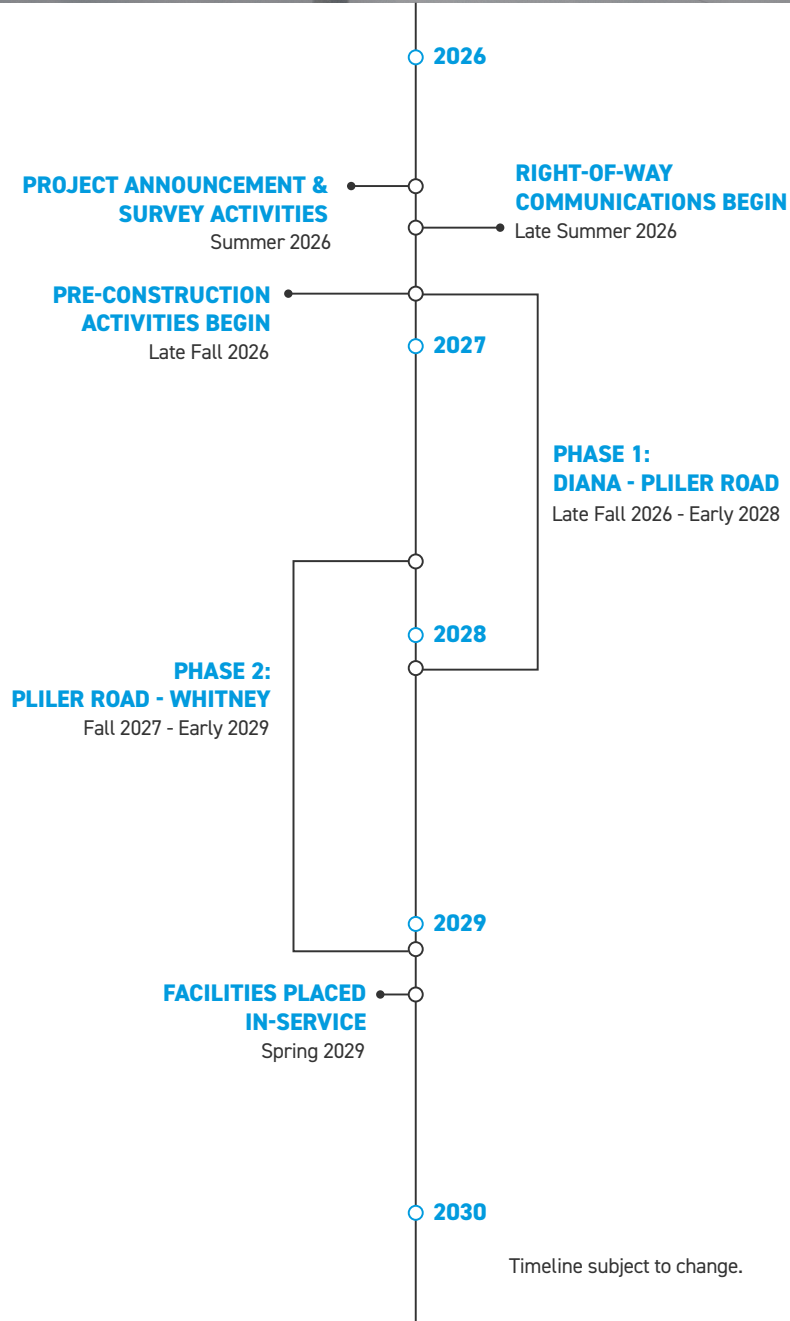
- Diana
- Pliler
- Whitney
- Harrison County
- Gregg County

BEFORE CONSTRUCTION

SWEPCO right-of-way representatives plan to contact landowners along the transmission line to discuss necessary easements, field activities and property access for construction activities.

Some pre-construction activities may include:

- Removing or trimming vegetation, or removing or relocating non-habitable structures from the right-of-way.
- Installing temporary gates, fencing and access roads.
- Installing culverts for water management.



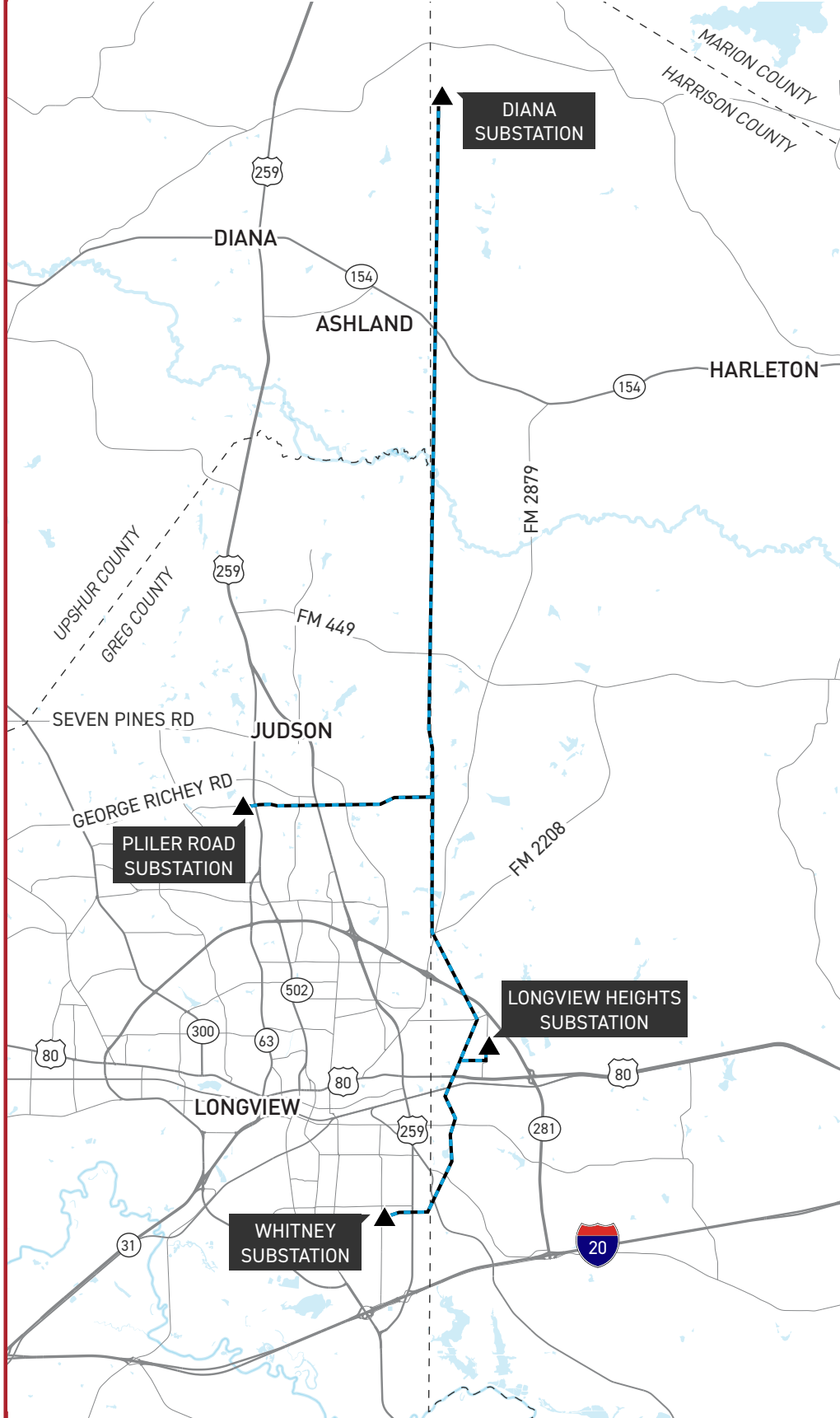
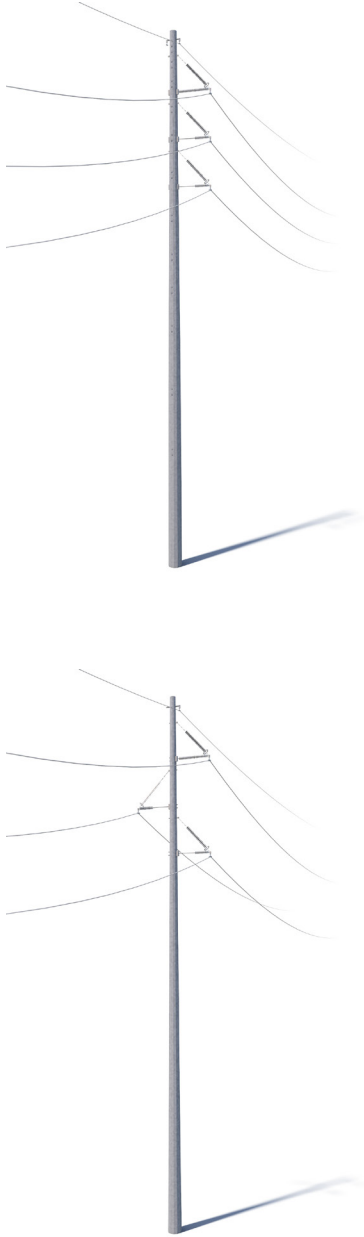
TYPICAL STRUCTURES

SWEPCO crews plan to install single-pole steel structures.

Typical Height: 90-100 feet

Typical Distance Between Structures: 450-750 feet

Typical Right-of-Way Width: 100 feet



DIANA - PLILER ROAD - WHITNEY TRANSMISSION IMPROVEMENTS PROJECT

- TRANSMISSION LINE TO BE REBUILT
- ▲ EXISTING SUBSTATION



*Exact structure, height, and right-of-way requirements may vary.

WE VALUE YOUR INPUT. PLEASE SEND COMMENTS AND QUESTIONS TO:

KATELYN HAHN · PROJECT OUTREACH SPECIALIST

SWEPCO_OUTREACH@AEP.COM · 888-793-7261

SWEPCO.COM/DPW

