

PIRKEY - SCOTTSVILLE TRANSMISSION IMPROVEMENTS PROJECT

Southwestern Electric Power Company (SWEPCO) representatives plan to improve reliability in the Marshall area by rebuilding about 19 miles of 138-kilovolt (kV) transmission line.

WHAT

The project involves:

- Replacing 19 miles of 138-kV transmission line
- Replacing wooden poles with steel poles
- Removing or trimming trees and woody-stemmed plants that have grown within SWEPCO's right-of-way
- Removing or relocating non-habitable structures such as sheds from the right-of-way

WHY

The project:

- Replaces deteriorating wooden structures that were installed in the early 1940s and have exceeded their service life
- Allows crews to clear the transmission line right-of-way, reducing tree-related outages and providing clear access for crews in case of emergency or maintenance
- Enhances the line's operational performance and reliability

WHERE

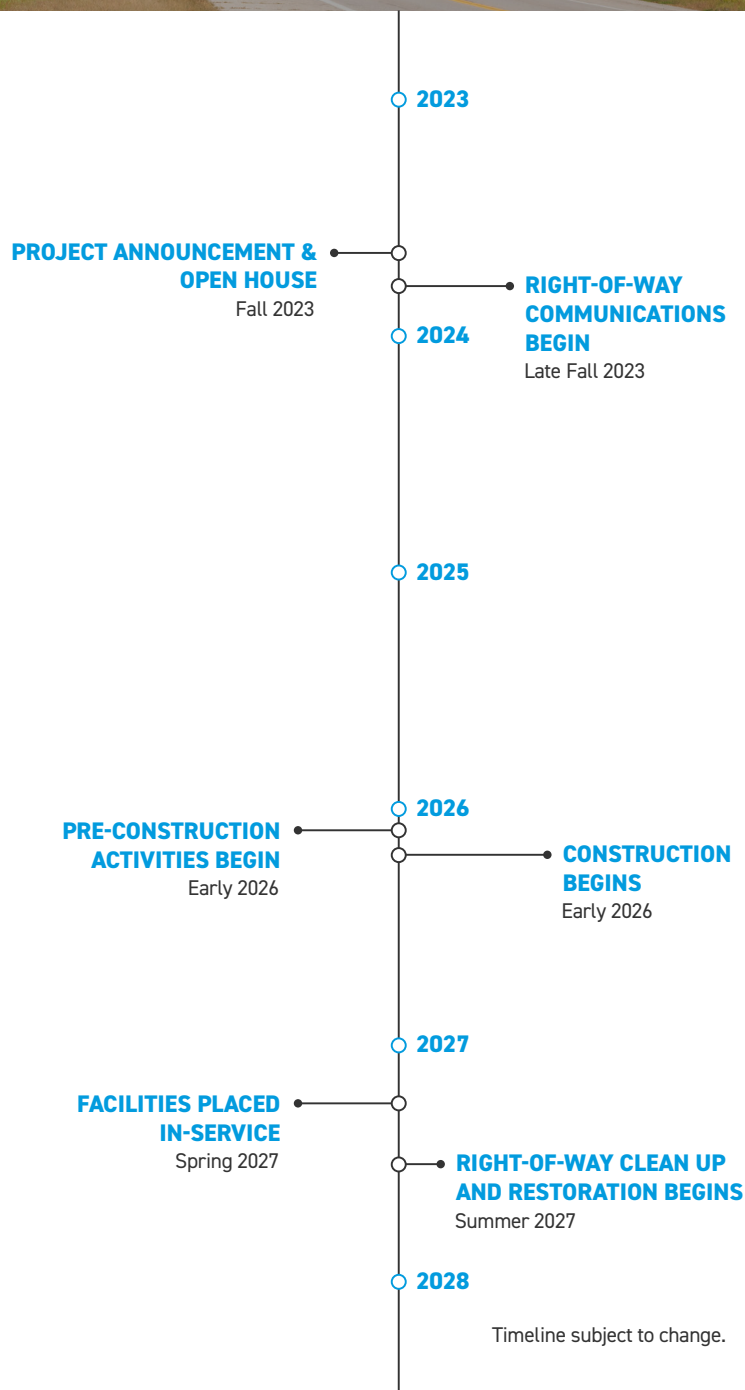
- Scottsville
- Marshall
- Harrison County

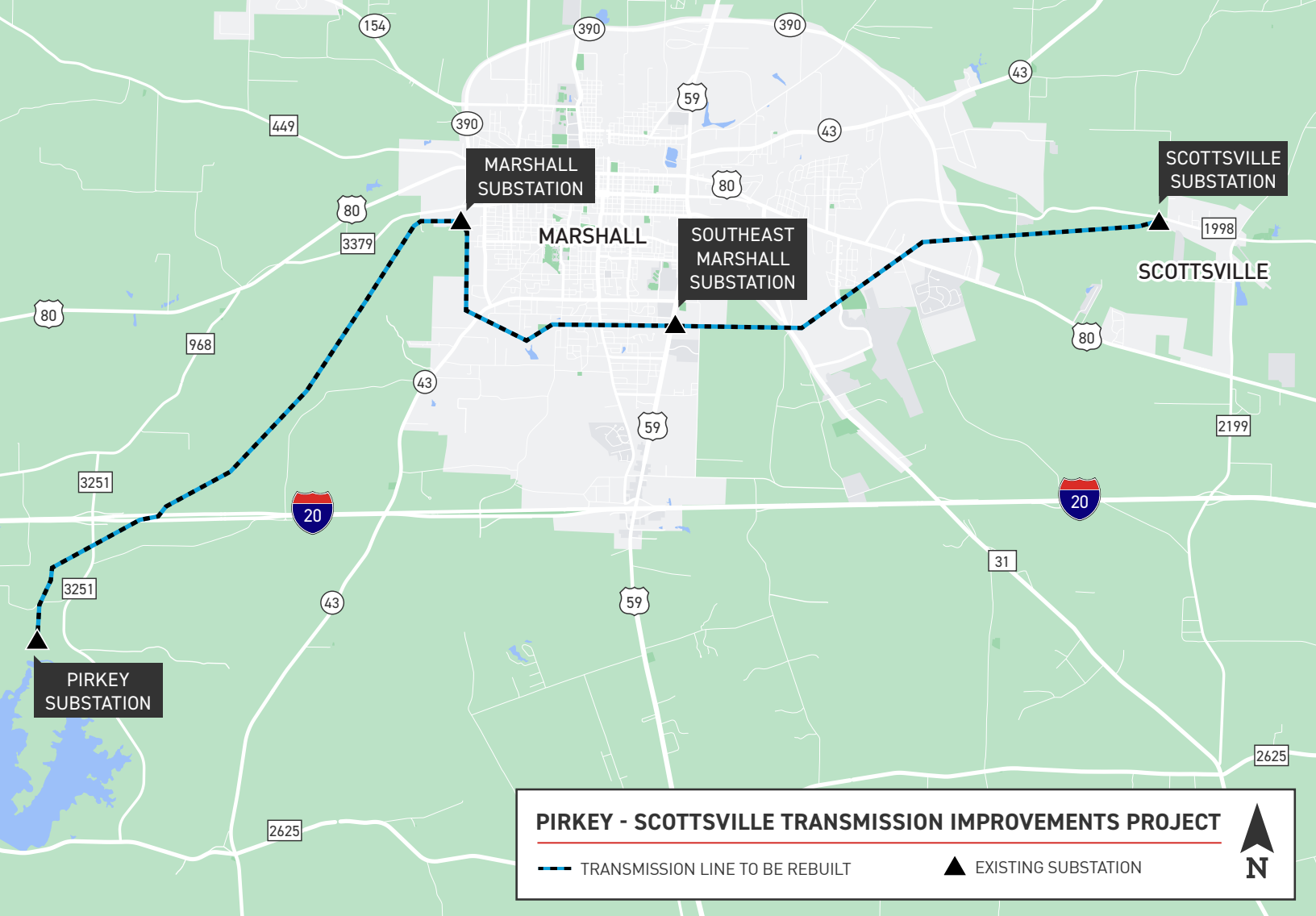
BEFORE CONSTRUCTION

A right-of-way agent may contact you if SWEPCO needs to acquire new or update existing easements on your property. You will also be contacted should crews need to access your property for survey work or construction.

Some pre-construction activities include:

- Removing or trimming vegetation, and removing or relocating non-habitable structures from the right-of-way
- Installing temporary gates, fencing and access roads
- Installing culverts for water management





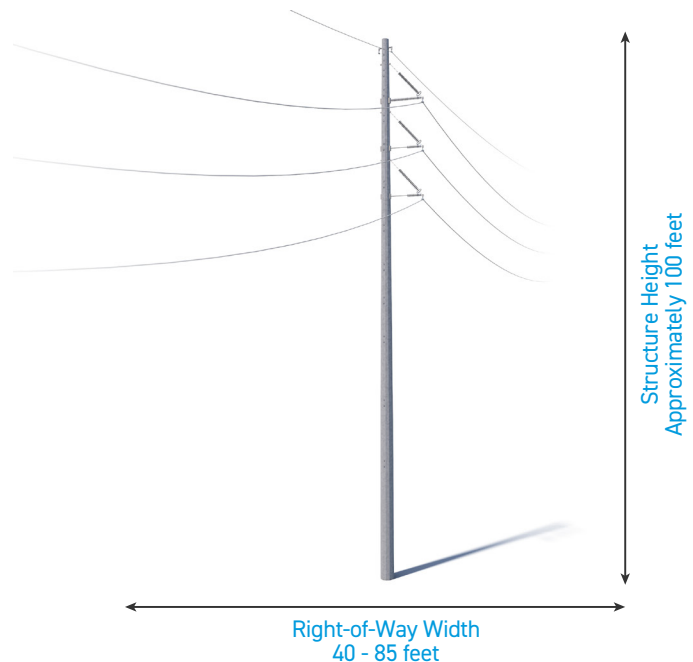
TYPICAL STRUCTURES

SWEPCO crews plan to install steel single-pole structures.

Typical Pole Height: **Approximately 100 feet**

Typical Right-of-Way Width: **40-85 feet**

Typical Distance Between Structures: **500 - 700 feet**



*Pole designs, heights and right-of-way requirements may vary based on structures and vegetation near the line route.

WE VALUE YOUR INPUT. PLEASE SEND COMMENTS AND QUESTIONS TO:

MICHAEL HARRIS • PROJECT OUTREACH SPECIALIST

MHHARRIS@AEP.COM • 918-231-8047

SWEPCO.COM/PIRKEY-SCOTTSVILLE



09/26/2024