

HAMILTON ROAD - PICACHO

TRANSMISSION LINE REBUILD PROJECT



AEP Texas representatives plan to upgrade the local electric transmission grid in Val Verde County. The Hamilton Road - Picacho Transmission Line Rebuild Project involves upgrading about 8 miles of electric transmission line to enhance electric reliability for area customers.

WHAT

The project involves:

- Rebuilding approximately 8 miles of 138-kilovolt transmission line in Del Rio
- Making minor upgrades to area substations
- Relocating about 2 miles of power line near De La Rosa Street in Del Rio

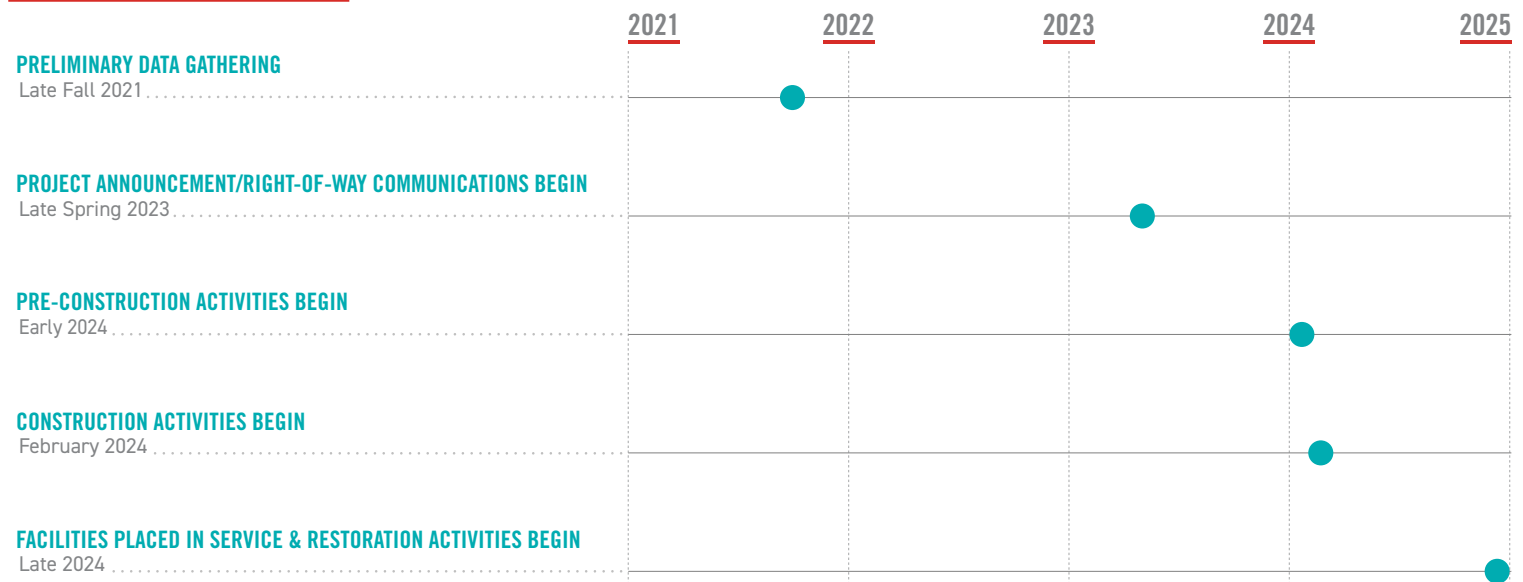
WHY

These upgrades would replace the 53-year-old deteriorating wooden poles with modern steel poles. Increasing the line's electric capacity with new wires helps meet current and future power demands while enhancing the line's operational performance.

WHERE

The transmission line rebuild begins at the Picacho Substation northwest of Del Rio and continues southeast through Del Rio, crossing U.S. Highway 90 and North Bedell Road to the Del Rio Substation near Veterans Boulevard. The rebuild continues east for about 2.5 miles to where it ends at the the Hamilton Road Substation near Val Verde Park.

PROJECT SCHEDULE

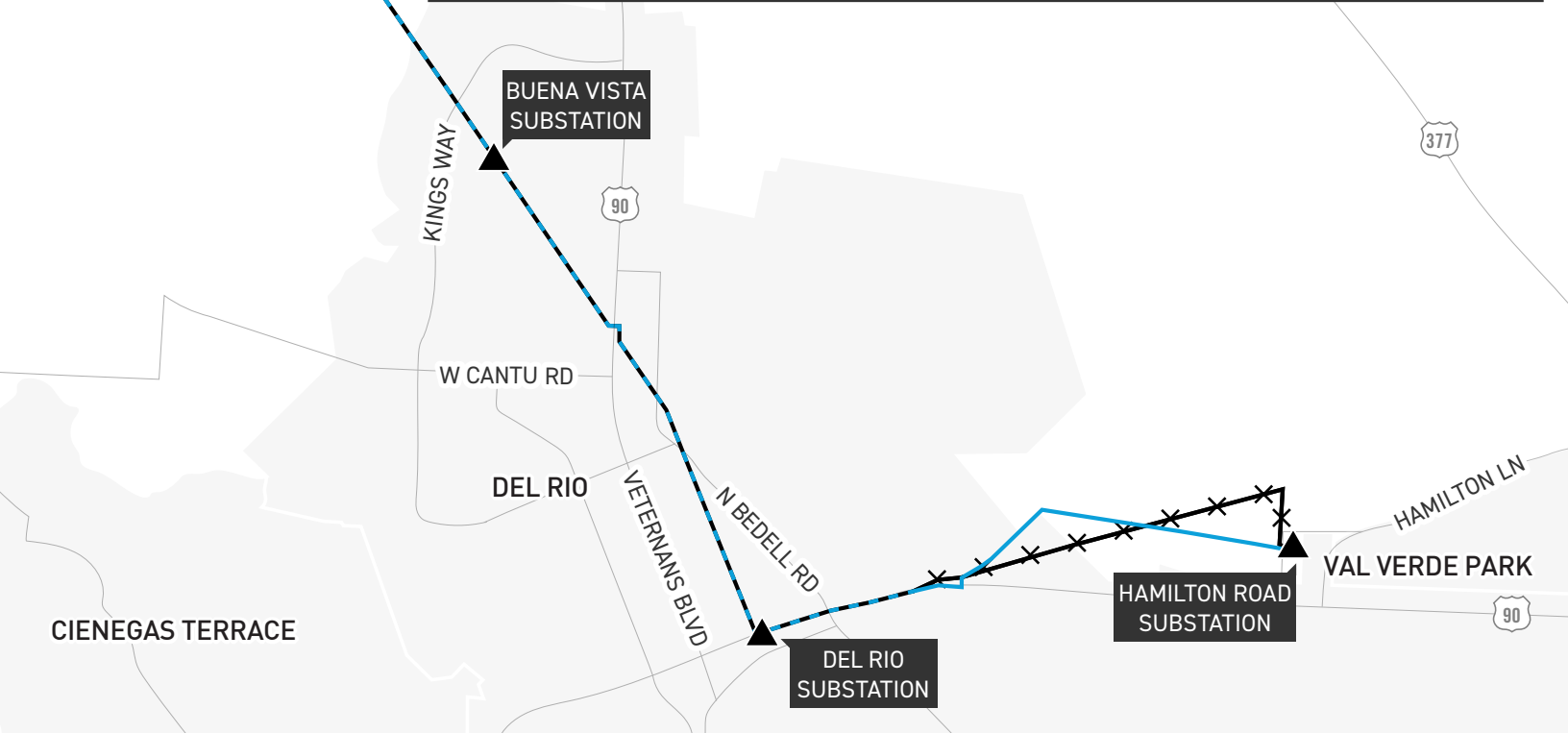


*Timeline subject to change

HAMILTON ROAD - PICACHO TRANSMISSION LINE PROJECT



- PHASE 1 TRANSMISSION LINE TO BE RELOCATED: HAMILTON - DEL RIO (FEBRUARY 2024 - APRIL 2024)
- - - PHASE 1 TRANSMISSION LINE TO BE REBUILT: HAMILTON - DEL RIO (FEBRUARY 2024 - APRIL 2024)
- - - PHASE 2 TRANSMISSION LINE TO BE REBUILT: DEL RIO - BUENA VISTA (MARCH 2024 - JUNE 2024)
- - - PHASE 3 TRANSMISSION LINE TO BE REBUILT: BUENA VISTA - PICACHO (SEPTEMBER 2024 - DECEMBER 2024)
- - - TRANSMISSION LINE TO BE REMOVED
- ▲ EXISTING SUBSTATION



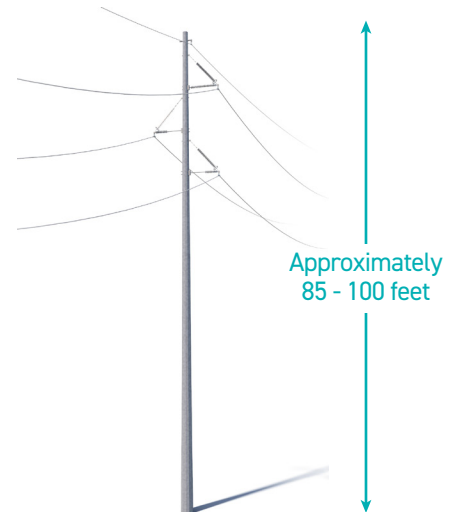
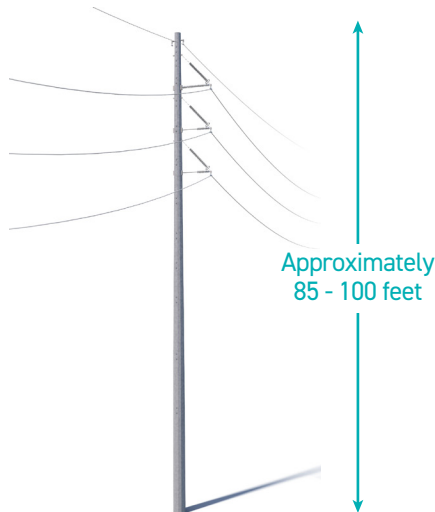
TYPICAL STRUCTURES

AEP Texas crews plan to install steel single poles on this project.

Typical Structure Height: 85 - 100 feet*

Typical Right-of-Way Width: 100 feet*

Typical Distance Between Structures: 850 feet*



*Exact structure, height and right-of-way requirements may vary

AEP TEXAS VALUES YOUR INPUT ABOUT THIS PROJECT. PLEASE SEND COMMENTS AND QUESTIONS TO:

ADRIANA KNIGHT

Project Outreach Specialist

833-329-4865

AEPTexasOutreach@aep.com

[AEPTexas.com/Hamilton-Picacho](https://aep.com/Hamilton-Picacho)

