

# WHEELERSBURG AREA IMPROVEMENTS PROJECT

AEP Ohio representatives plan power grid upgrades in Scioto County. The upgrades enhance area electric reliability by adding another power source and replacing aging equipment with modern facilities.

## WHAT

The project involves:

- Building about 5 miles of 138-kilovolt (kV) power line.\*
- Rebuilding about 2 miles of 138-kV power line.\*
- Building Althea Substation located off Gallia Pike in Franklin Furnace.
- Building Sweetgum Substation located near OH-522 and Mill Road.
- Removing about 10 miles of transmission facilities between Millbrook Park Substation and Wheelersburg Substation.\*\*
- Removing Wheelersburg Substation.\*\*

\*This segment of the project requires Ohio Power Siting Board (OPSB) approval.

\*\* Timeline for removal currently under review.

## WHY

The improvements:

- Enhance electric service reliability for customers by providing an additional power source to meet the current power demand
- Replace deteriorating equipment from 1916 with modern facilities to ensure continued reliable electric service
- Upgrade the power grid and speed recovery of service when an outage occurs

## WHERE

The project area involves:

- City of Wheelersburg
- Porter Township
- Green Township
- Sciotodale
- Allentown
- Village of New Boston

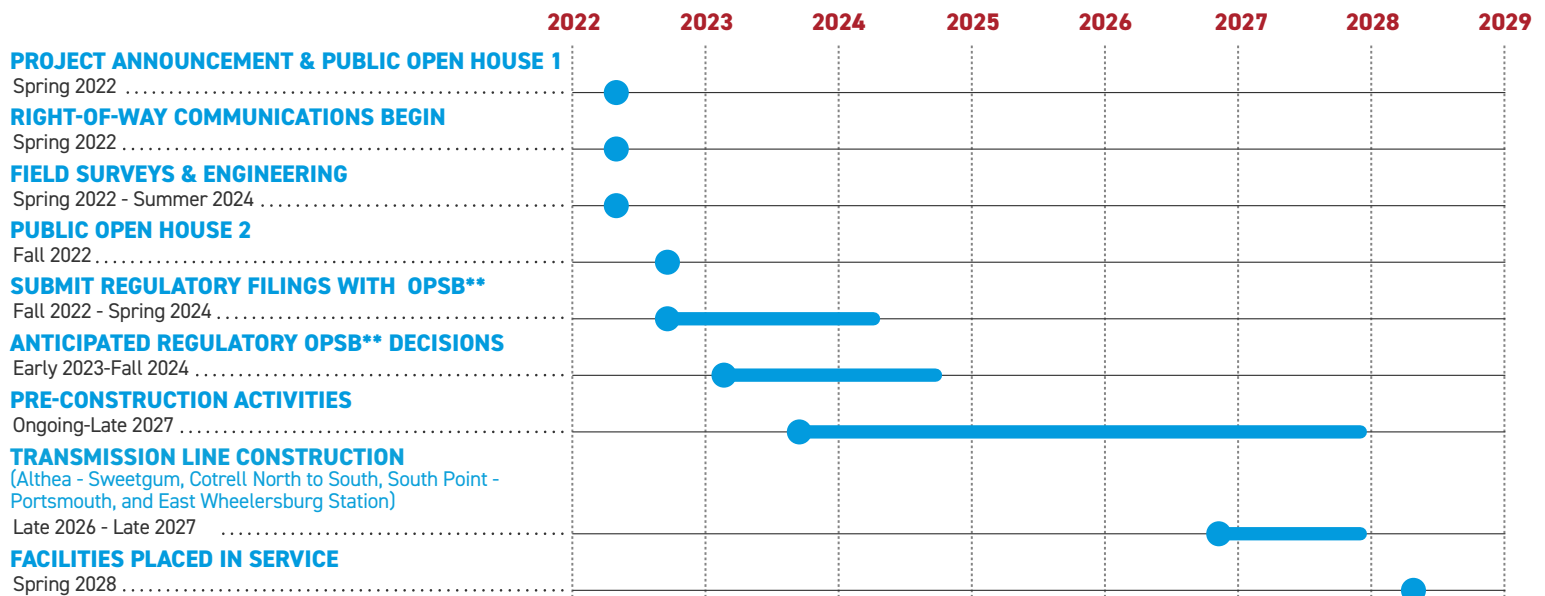
## WHERE

AEP Ohio right-of-way representatives plan to contact affected landowners regarding surveys, field work inside easements along the transmission line route and construction access.

Some pre-construction activities include:

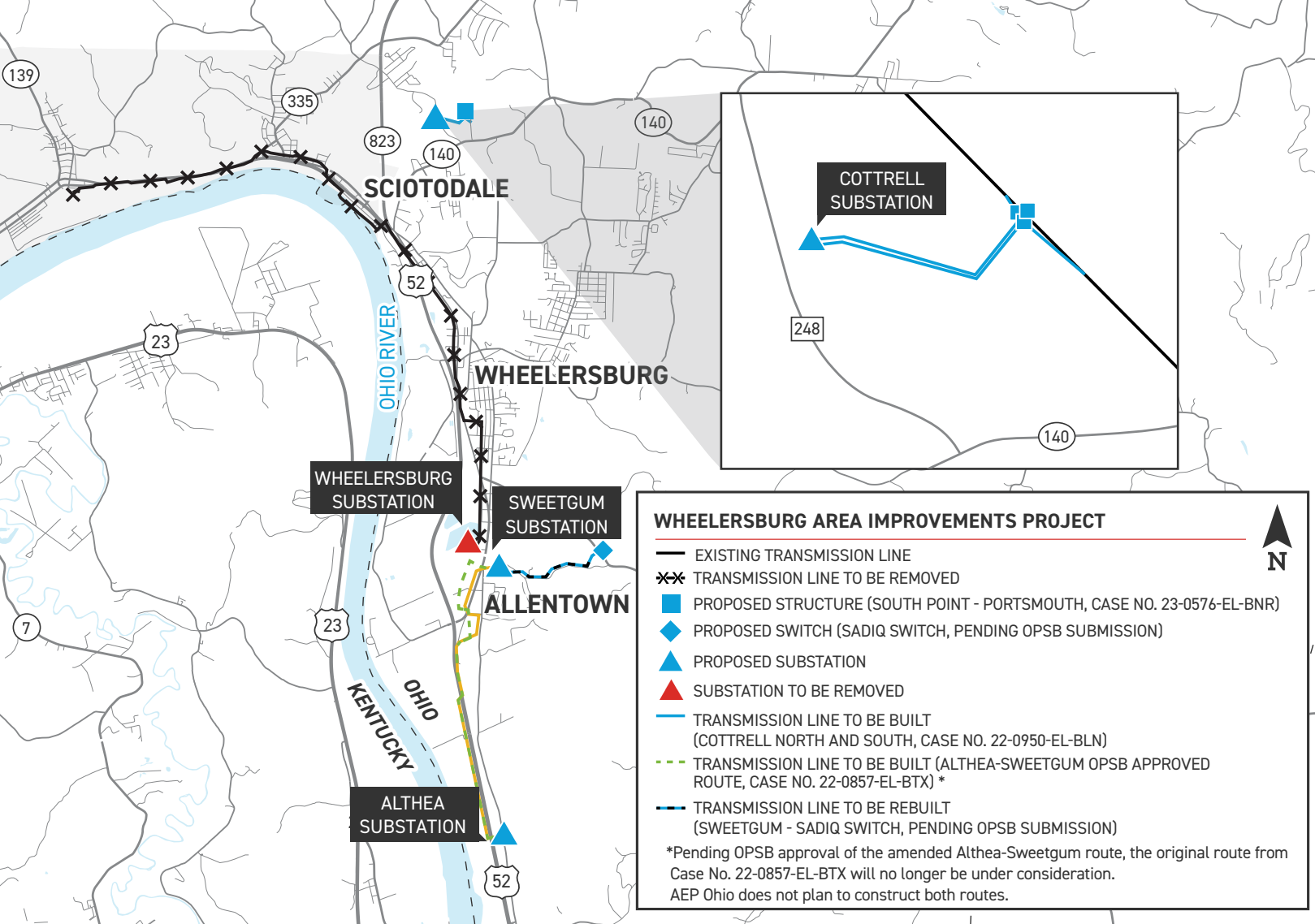
- Trimming or removing wood-stemmed vegetation and removing or relocating non-habitable structures from the right-of-way.
- Installing temporary gates, fencing and access roads.

## PROJECT SCHEDULE



\*Timeline subject to change.

\*\*OPSB: Ohio Power Siting Board



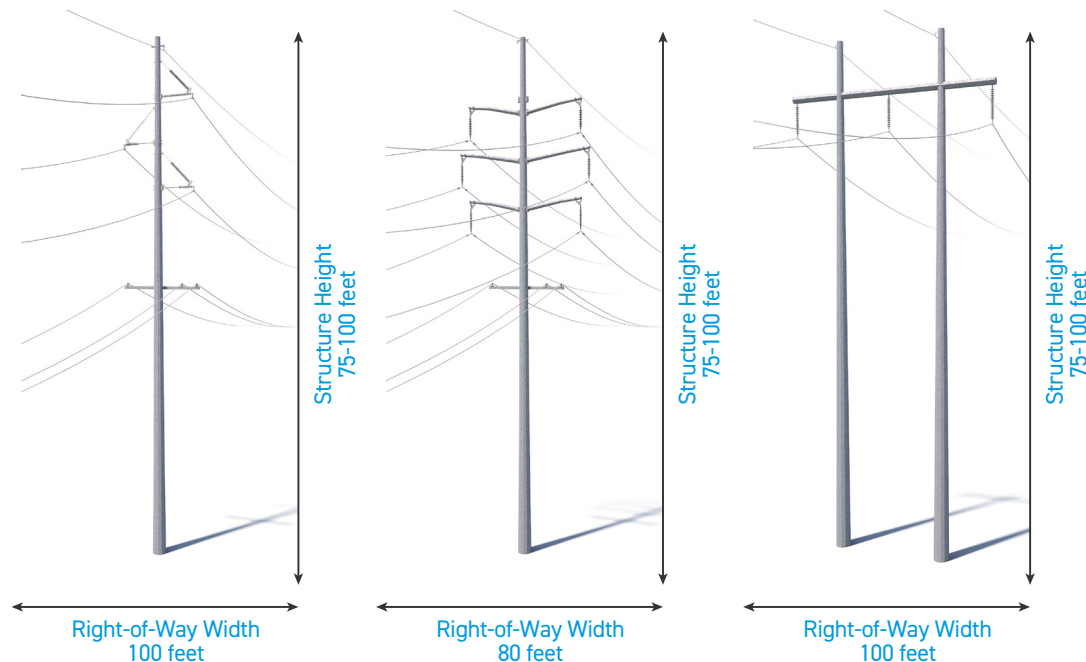
## TYPICAL STRUCTURES

The project involves the use of steel single pole and H-frame structures.

Pole Height Range: 75-100 feet

Right-of-Way Width Range: 80-100 feet

Exact structure, height, and right-of-way requirements may vary.



**WE VALUE YOUR INPUT. PLEASE SEND COMMENTS AND QUESTIONS TO:**

AEP OHIO OUTREACH TEAM

AEP OHIO\_OUTREACH@AEP.COM • 614-933-2998

AEP OHIO.COM/WHEELERSBURG