

WEST WATERTOWN TRANSMISSION IMPROVEMENTS PROJECT

AEP Ohio representatives plan power grid upgrades in Washington County. The upgrades enhance area electric reliability by adding another power source and allowing for the retirement of deteriorating infrastructure. Crews expect to begin construction in early 2027 and conclude by fall 2029.

WHAT

The project involves:

- Building about 4 miles of 138-kilovolt (kV) power line
- Building about 6 miles of 69-kV power line
- Retiring about 9 miles of existing transmission facilities*
- Building West Watertown Substation near Reed Road and OH-67

*Timeline for removal currently under review

WHY

The improvements:

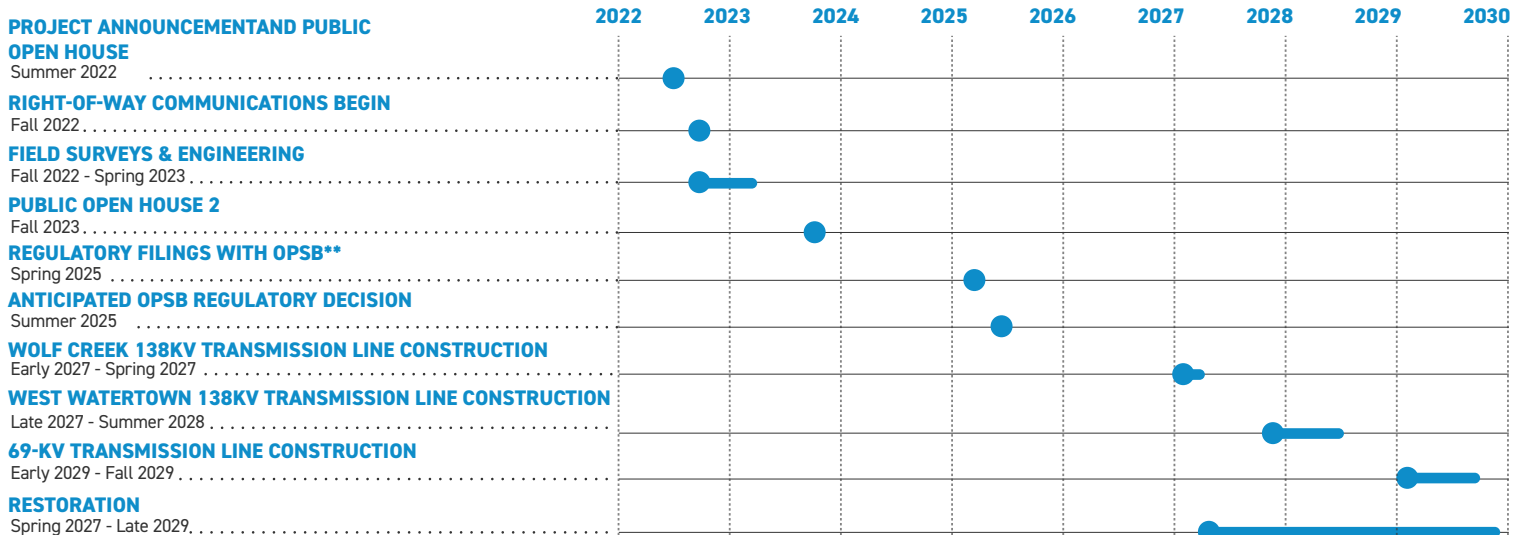
- Enhance electric service reliability for customers
- Modernize power lines to meet increasing power demands and reduce customer outages
- Allow more operational flexibility when outages occur. In case of an outage on one line, another can continue to serve customers
- Retire deteriorating transmission facilities that date back to 1965
- Benefit the local distribution companies and cooperatives, such as Washington Electric, who receive power from the transmission lines

WHERE

The project area involves:

- Washington County
- Watertown Township
- Waterford

PROJECT SCHEDULE

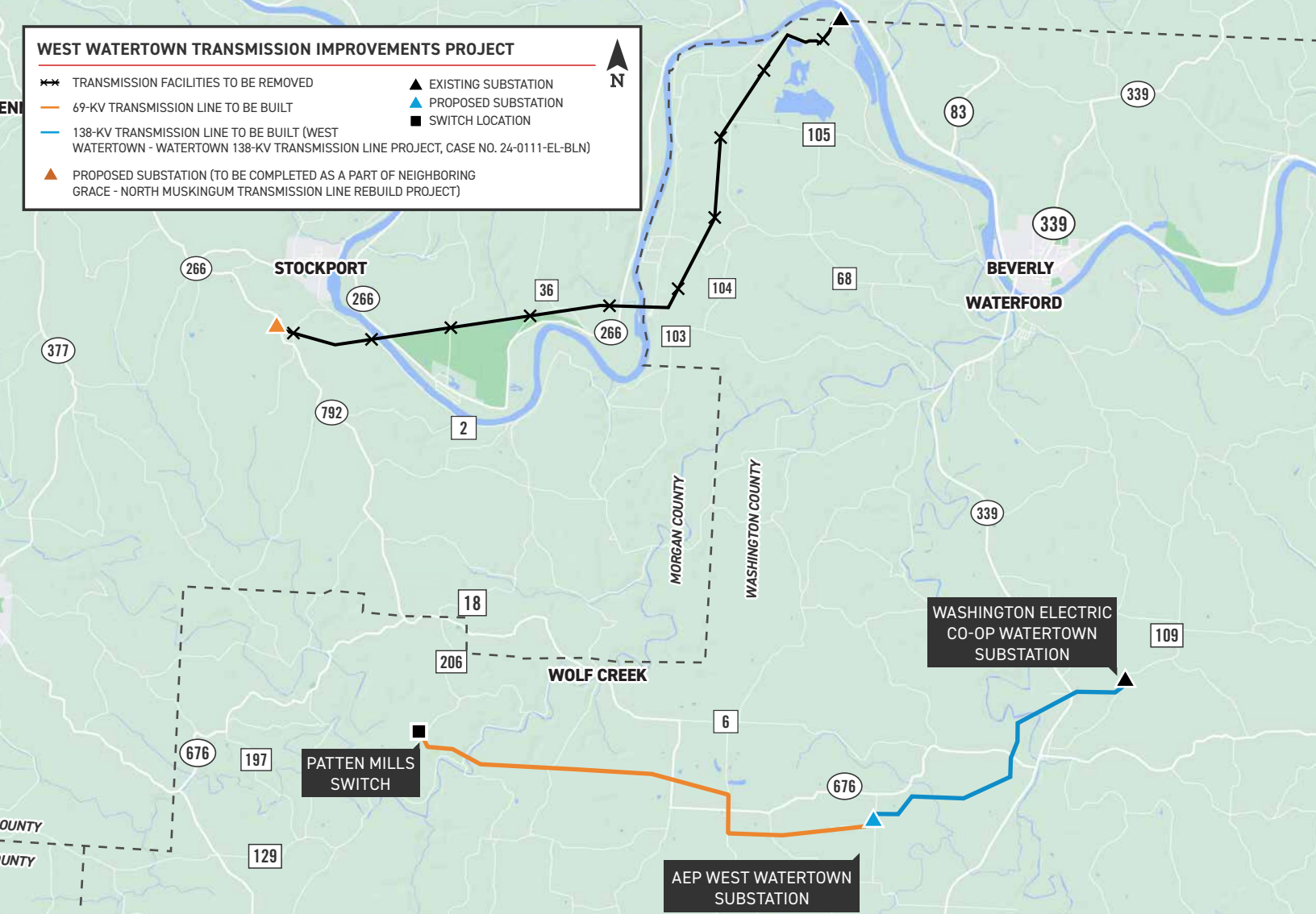


*Timeline subject to change.

**Ohio Power Siting Board

WEST WATERTOWN TRANSMISSION IMPROVEMENTS PROJECT

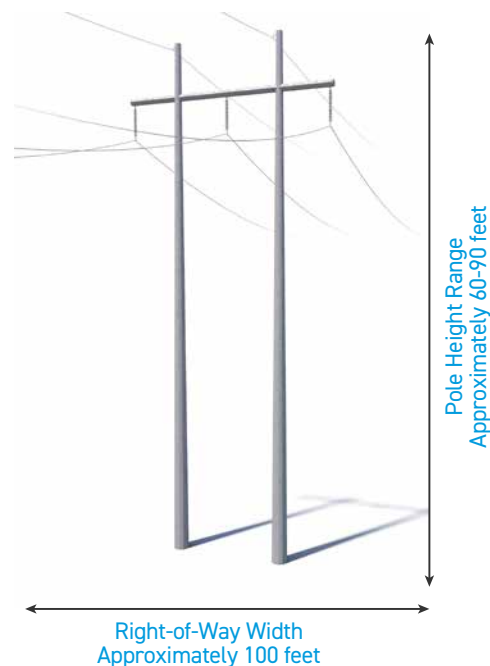
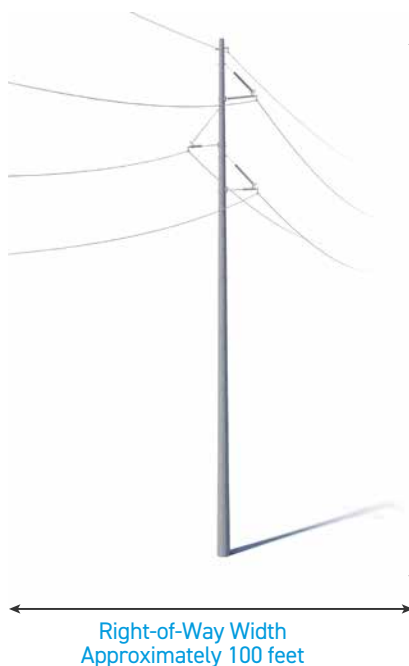
- ✖✖ TRANSMISSION FACILITIES TO BE REMOVED
- 69-KV TRANSMISSION LINE TO BE BUILT
- 138-KV TRANSMISSION LINE TO BE BUILT (WEST WATERTOWN - WATERTOWN 138-KV TRANSMISSION LINE PROJECT, CASE NO. 24-0111-EL-BLN)
- ▲ EXISTING SUBSTATION
- ▲ PROPOSED SUBSTATION
- SWITCH LOCATION
- ▲ PROPOSED SUBSTATION (TO BE COMPLETED AS A PART OF NEIGHBORING GRACE - NORTH MUSKINGUM TRANSMISSION LINE REBUILD PROJECT)



TYPICAL STRUCTURES

The project involves the use of single steel poles and H-frame poles.

Pole Height Range: [Approximately 60-90 feet](#)
 Right-of-Way Width: [Approximately 100 feet](#)



*Exact structure, height, and right-of-way requirements may vary depending on location, terrain and voltage.

WE VALUE YOUR INPUT. PLEASE SEND COMMENTS AND QUESTIONS TO:

AEP OHIO OUTREACH TEAM

AEP OHIO_OUTREACH@AEP.COM • 614-933-2998

AEP OHIO.COM/WESTWATERTOWN



05/19/2025