

ROSELMs-KALIDA

AREA IMPROVEMENTS PROJECT



AEP Ohio representatives plan power grid upgrades in Putnam and Paulding counties. The project involves rebuilding about 30 miles of power line and building about 10 miles of power line. The proposed upgrades improve reliability by replacing aging infrastructure and speeding recovery of service when outages occur.

WHAT

The project involves:

- Rebuilding about 30 miles of power line
- Building about 10 miles of power line
- Replacing wooden poles with steel poles

WHY

The improvements:

- Replace wooden poles that date back to 1960 and 1970
- Strengthen the local power grid
- Reduce the likelihood of power outages
- Speed recovery of service when outages occur

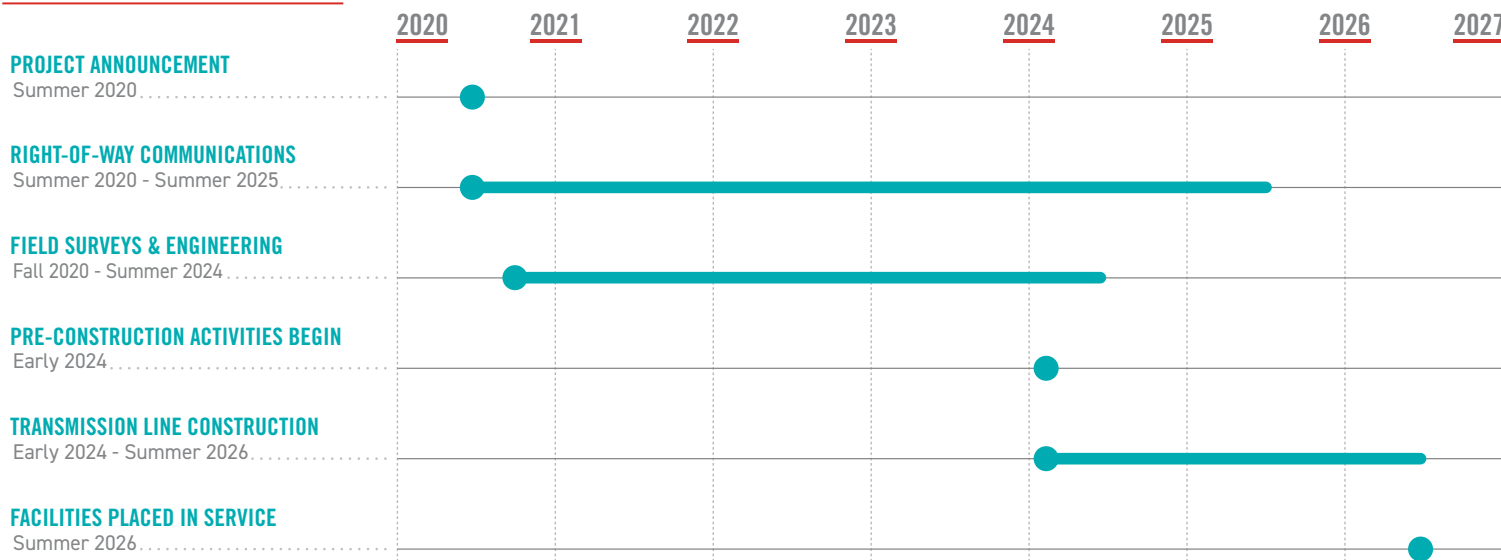
WHERE

The project area includes:

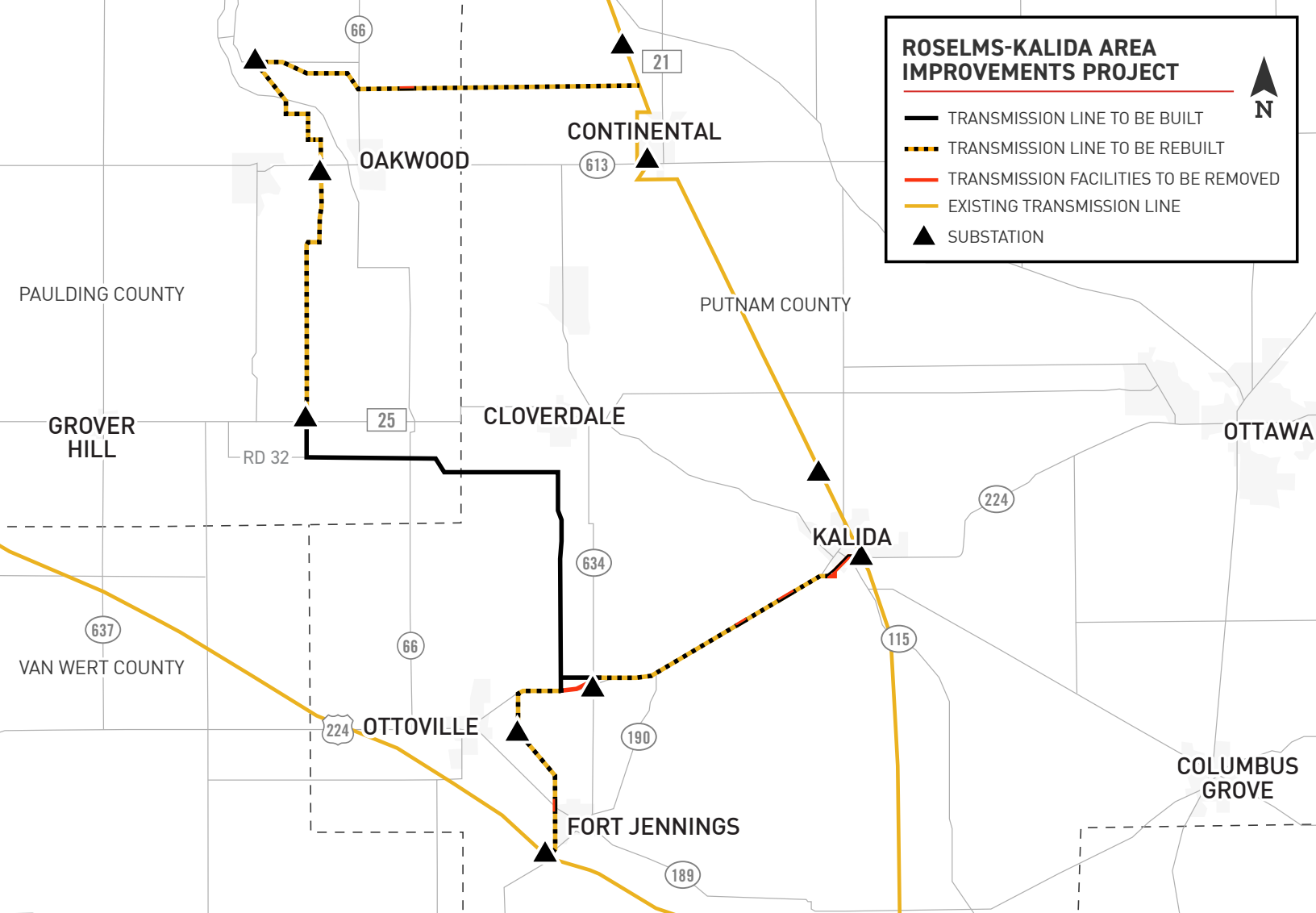
- Putnam County
- Paulding County

Company representatives plan to update, supplement and acquire new property easements where necessary to ensure the safe construction, operation and maintenance of the power lines.

PROJECT SCHEDULE



*Timeline subject to change.



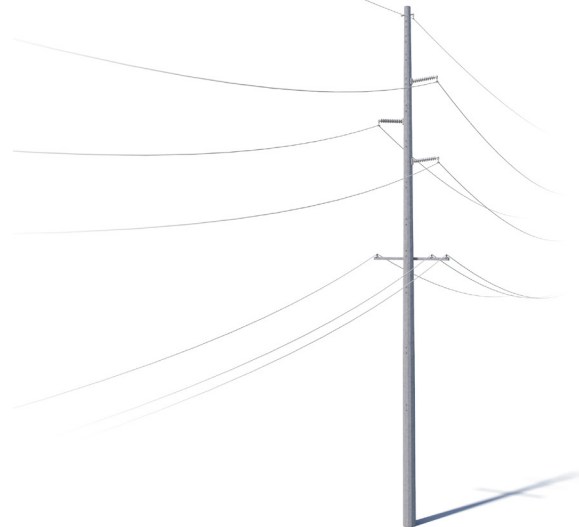
TYPICAL STRUCTURES

The project involves the use of single, steel poles.


Structure Height: **Approximately 80 feet***




Right-of-Way Width: **Approximately 60 feet***

*Exact structure, height and right-of-way requirements may vary



AEP OHIO VALUES YOUR INPUT ABOUT THIS PROJECT. PLEASE SEND COMMENTS AND QUESTIONS TO:

 AEP Ohio
c/o AEP Ohio Outreach Team
8500 Smiths Mill Road
New Albany, OH 43054

 AEPOhio_Outreach@aep.com
 614-933-2998
 AEPOhio.com/Roselms-Kalida

