

# Piketon Area Improvements Project

AEP Ohio representatives plan power grid improvements in Pike, Jackson and Gallia counties to connect a new customer to the electric grid and maintain reliable electricity for area residents. The project, paid for by the requesting customer, has no impact on electricity bills for other Ohio residents. If approved, crews expect to begin construction in early 2027 and conclude late 2028.

## What

The project involves:

- Building Baku Substation in Pike County off Wakefield Mound Road.
- Building about 50 miles of 765-kilovolt transmission line between Baku Substation and Gavin Substation, located in Cheshire near Highway 554.

\*This project requires Ohio Power Siting Board Approval

## Why

The proposed additions to the power grid:

- Provide power to a new customer facility in the area.
- Create opportunity for future growth and community development.

## Where

Pike County

- Scioto, Union and Marion townships

Jackson County

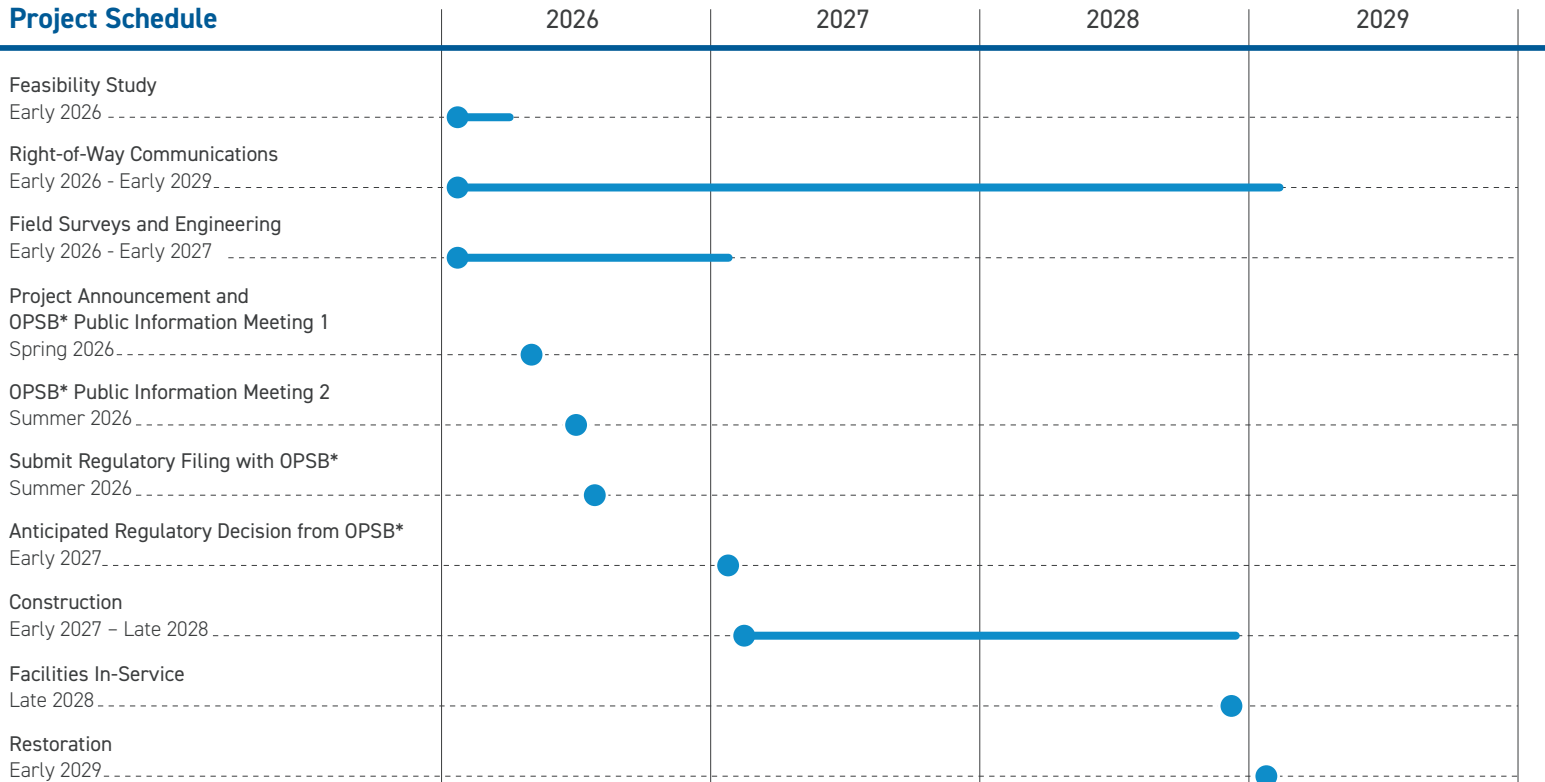
- Scioto, Franklin and Bloomfield townships

Gallia County

- Huntington, Morgan and Cheshire townships
- Village of Vinton

Company representatives plan to evaluate study segments to construct the transmission line. Study segments include alternatives to determine a final transmission line route. Company representatives do not build all study segments, rather, they select one route based on public feedback and feasibility.

## Project Schedule



\*Ohio Power Siting Board.

Timeline subject to change.

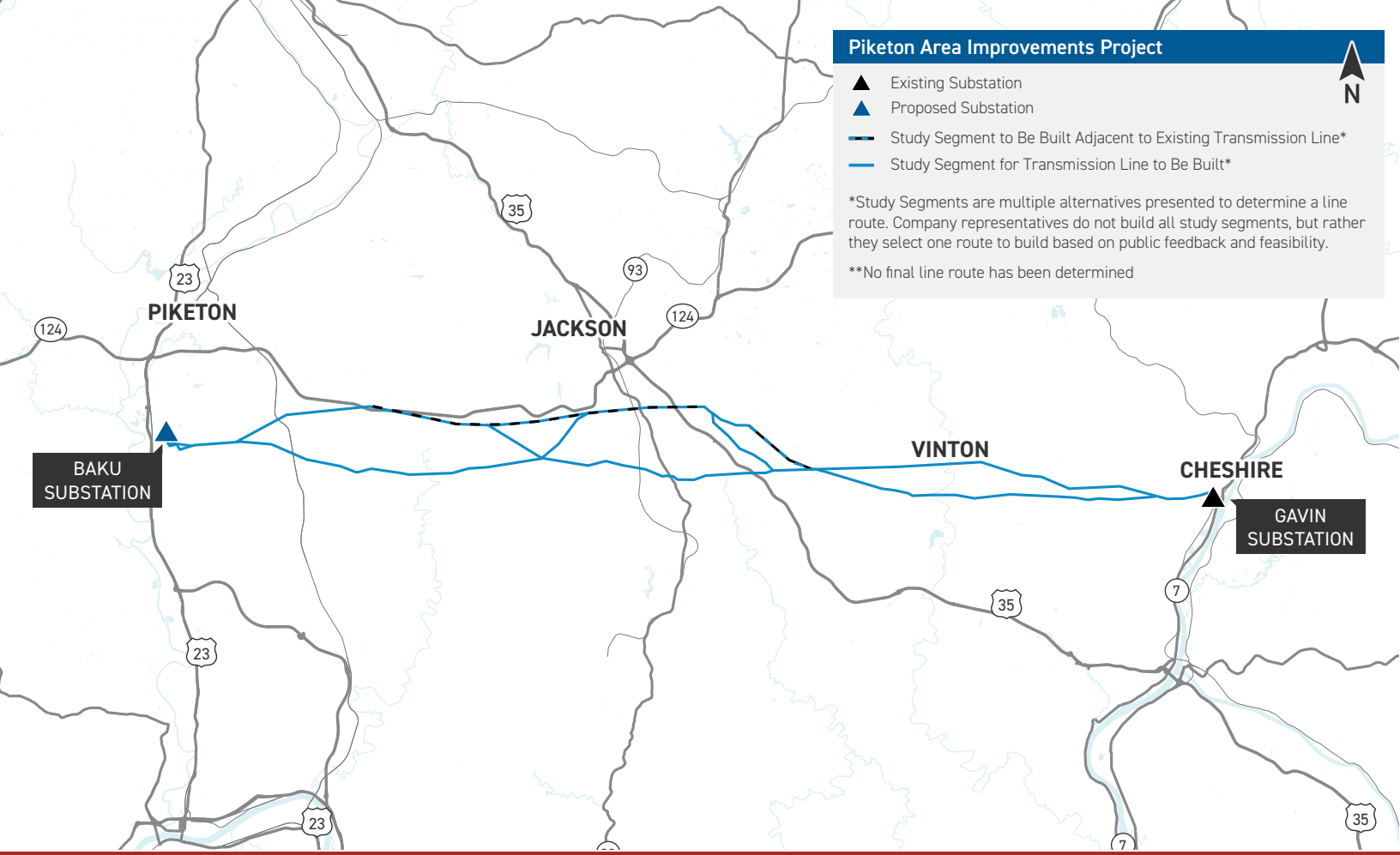
## Piketon Area Improvements Project



- ▲ Existing Substation
- ▲ Proposed Substation
- Study Segment to Be Built Adjacent to Existing Transmission Line\*
- Study Segment for Transmission Line to Be Built\*

\*Study Segments are multiple alternatives presented to determine a line route. Company representatives do not build all study segments, but rather they select one route to build based on public feedback and feasibility.

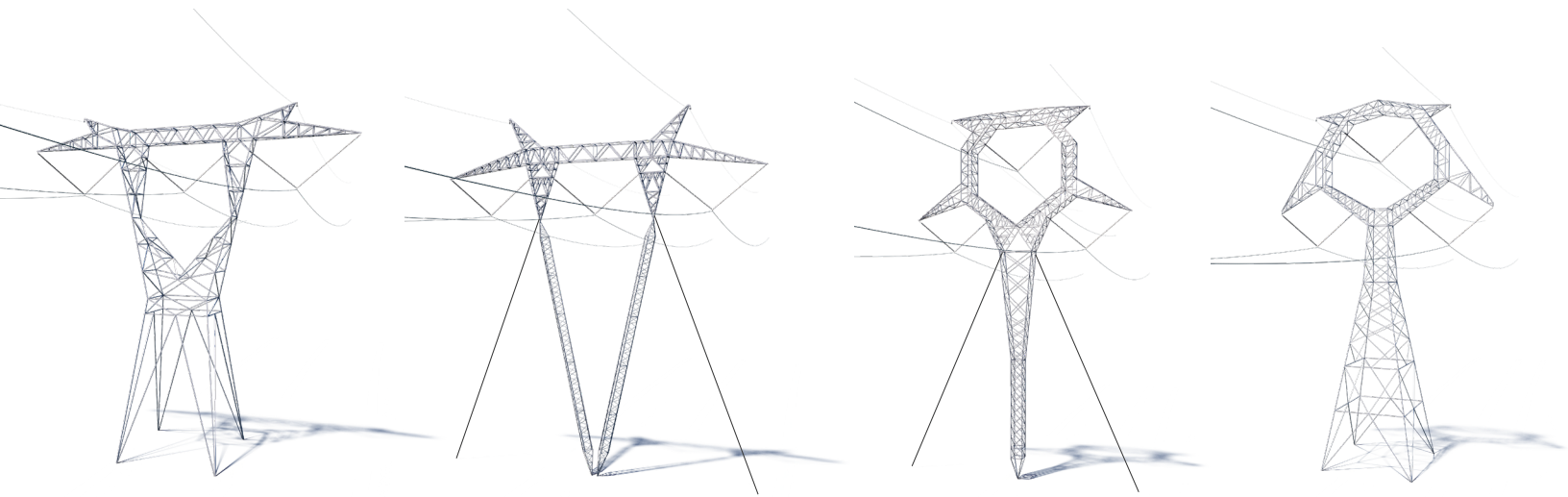
\*\*No final line route has been determined



### Typical Structures

The project involves the use of steel lattice towers.

Pole Height: 155 feet\*  
Right-of-Way Width: 200 Feet



\*Exact structure types, height and right-of-way requirements may vary.



**We value your input. Please send comments and questions to:**

Maggie Beggs • Project Outreach Specialist  
PiketonArea@AEPTransmission.com • 833-225-2043

[AEPOhio.com/PiketonArea](http://AEPOhio.com/PiketonArea)

04/14/2026