

# PHILO-NEWCOMERSTOWN AREA IMPROVEMENTS PROJECT

AEP Ohio representatives plan power grid upgrades to improve electric reliability for customers in Tuscarawas, Guernsey, Coshocton and Muskingum counties. The Philo-Newcomerstown Area Improvements Project involves rebuilding about 35 miles of 138-kilovolt (kV) power line and building about 5 miles of 138-kV power line.

## WHAT

The project involves:

- Rebuilding about 13 miles of power line between Philo Substation and Norfield Switch in Muskingum County
- Rebuilding about 20 miles of power line between East New Concord and Newcomerstown substations in Guernsey and Tuscarawas counties
- Building about 5 miles of power line to connect East New Concord Substation to the Philo - Norfield Switch power line in Guernsey and Muskingum counties
- Rebuilding about 2 miles of power line adjacent to its existing location between an existing power line and Bridgeville Substation in Perry Township in Muskingum County
- Rebuilding 0.1 miles of power line adjacent to its existing location between an existing power line and Guernsey-Muskingum Electric Cooperative Substation off Salt Creek Drive in Salt Creek Township in Muskingum County
- Retiring about 31 miles of power line between Philo and Newcomerstown

\*This project requires multiple regulatory filings with the Ohio Power Siting Board (OPSB)

## WHY

The existing line has experienced over 50 outages in the last 10 years and needs replacement.

The improvements:

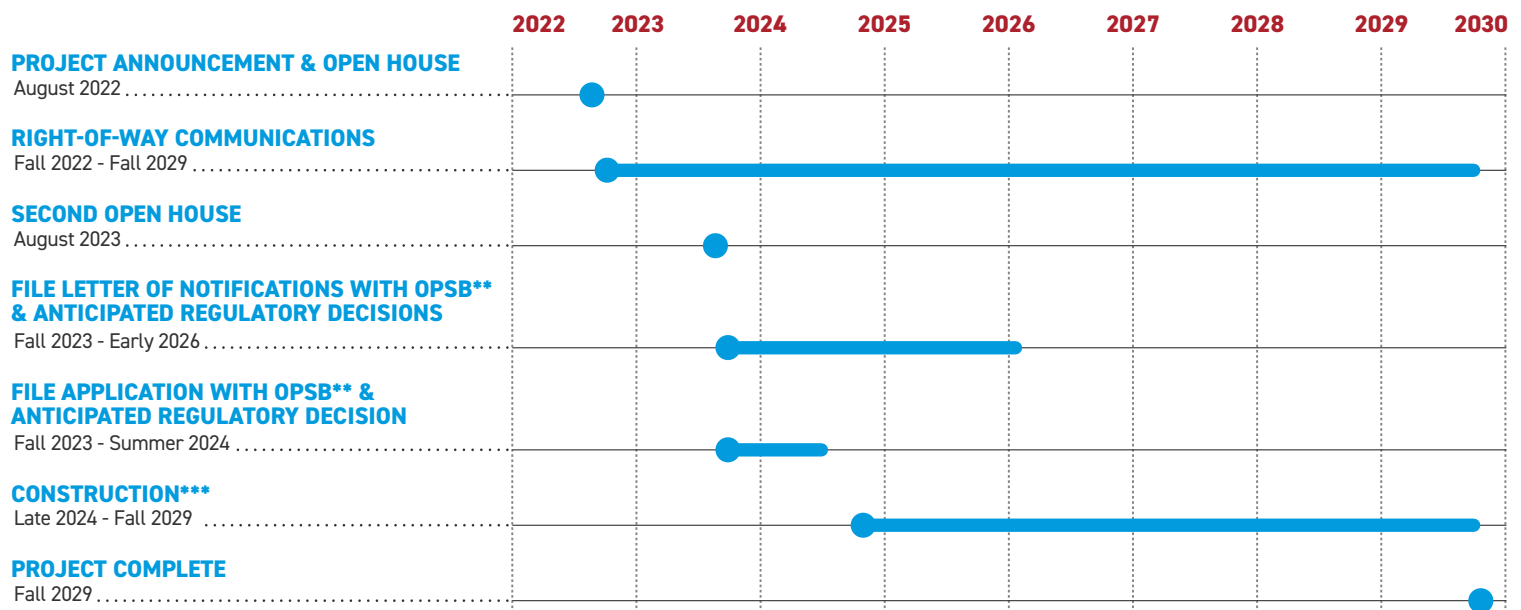
- Enhance electric service reliability for Guernsey-Muskingum Electric Cooperative and local customers
- Upgrade infrastructure dating back to 1923
- Reduce extended power outages
- Speed recovery of service when outages occur

## WHERE

The project area includes:

- Oxford Township in Tuscarawas County
- Wheeling, Liberty, Knox, Adams and Westland townships in Guernsey County
- Linton Township in Coshocton County
- Monroe, Highland, Union, Perry, Salt Creek, Rich Hill, Wayne and Harrison townships in Muskingum County
- Village of Newcomerstown
- Village of New Concord
- Village of Philo

## PROJECT SCHEDULE



\*Timeline subject to change

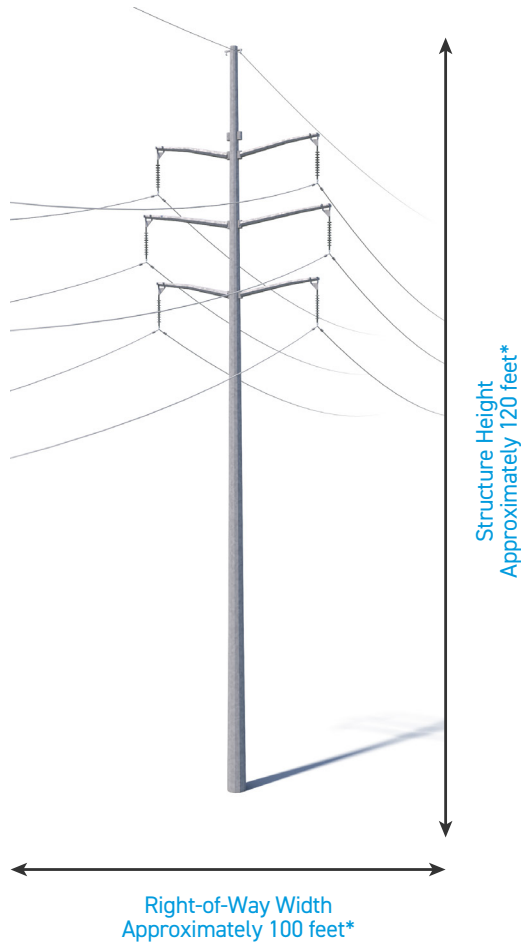
\*\*This project requires multiple regulatory filings with the Ohio Power Siting Board (OPSB)

\*\*\*Company officials plan to construct the project in sequences. Not all sections of the project will be under construction at once.

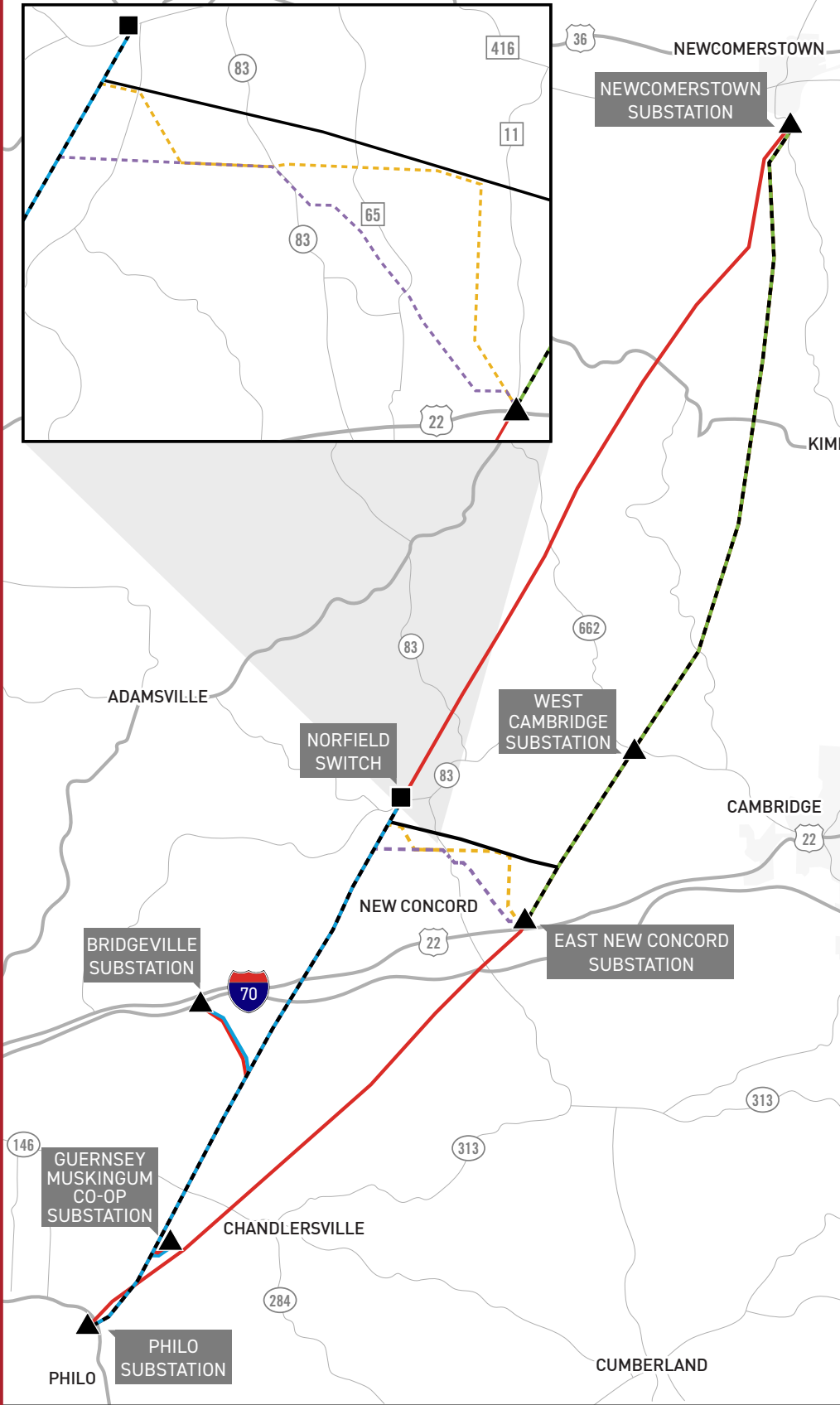
# TYPICAL STRUCTURES

This project involves the use of steel single-poles.

Structure Height: Approximately 120 feet\*  
Right-of-Way Width: Approximately 100 feet\*



\*Exact structure, height and right-of-way requirements may vary.



## PHILO-NEWCOMERSTOWN AREA IMPROVEMENTS PROJECT

- |                              |  |
|------------------------------|--|
| — EXISTING TRANSMISSION LINE | — TRANSMISSION LINE TO BE REBUILT IN 2024* |
| ■ PROPOSED SWITCH            | — TRANSMISSION LINE TO BE REBUILT IN 2027* |
| ▲ EXISTING SUBSTATION        | — TRANSMISSION LINE TO BE RETIRED          |
| — ALTERNATE ROUTE 1          | — TRANSMISSION LINE TO BE BUILT            |
| — ALTERNATE ROUTE 2          |  |

\*Timeline subject to change



WE VALUE YOUR INPUT. PLEASE SEND COMMENTS AND QUESTIONS TO:

AEP OHIO OUTREACH TEAM  
AEP OHIO\_OUTREACH@AEP.COM • 614-933-2998  
AEP OHIO.COM/PHILO



An AEP Company