

Morse-Gahanna-East Broad Transmission Line Rebuild Project

AEP Ohio representatives plan power upgrades in Franklin County. The upgrades improve electrical reliability by replacing deteriorating wooden poles with modern steel poles. Crews expect construction to begin late 2027 and conclude summer 2031.

What

The project involves:

- Rebuilding about 9 miles of 138-kV transmission line
- Upgrading five substations
- *This project involves Ohio Power Siting Board (OPSB) approval.

Why

The existing power lines and substations date back to the 1950s. The infrastructure is aging, and the area has experienced multiple power outages in recent years. This project modernizes the local transmission system with upgraded steel poles and substation equipment, improves operational performance and reduces the likelihood of extended power outages for area customers.

Where

The project area includes:

- Franklin County
- Plain Township
- Mifflin Township
- City of Columbus
- Jefferson Township
- City of Gahanna
- Blendon Township

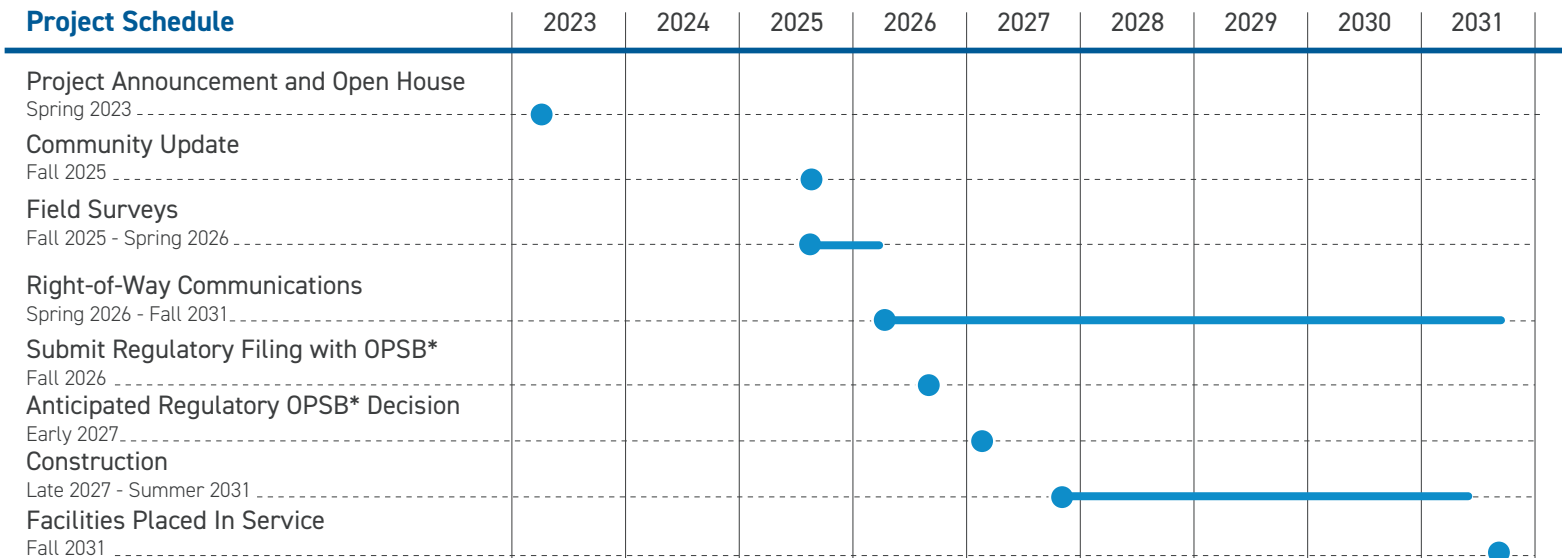
Company representatives plan to rebuild the power line in the existing right-of-way; however, they may need to acquire new easements or update current easements. Easements are defined land rights that property owners grant to allow for the safe construction, operation, and maintenance of the power line.

Before Construction

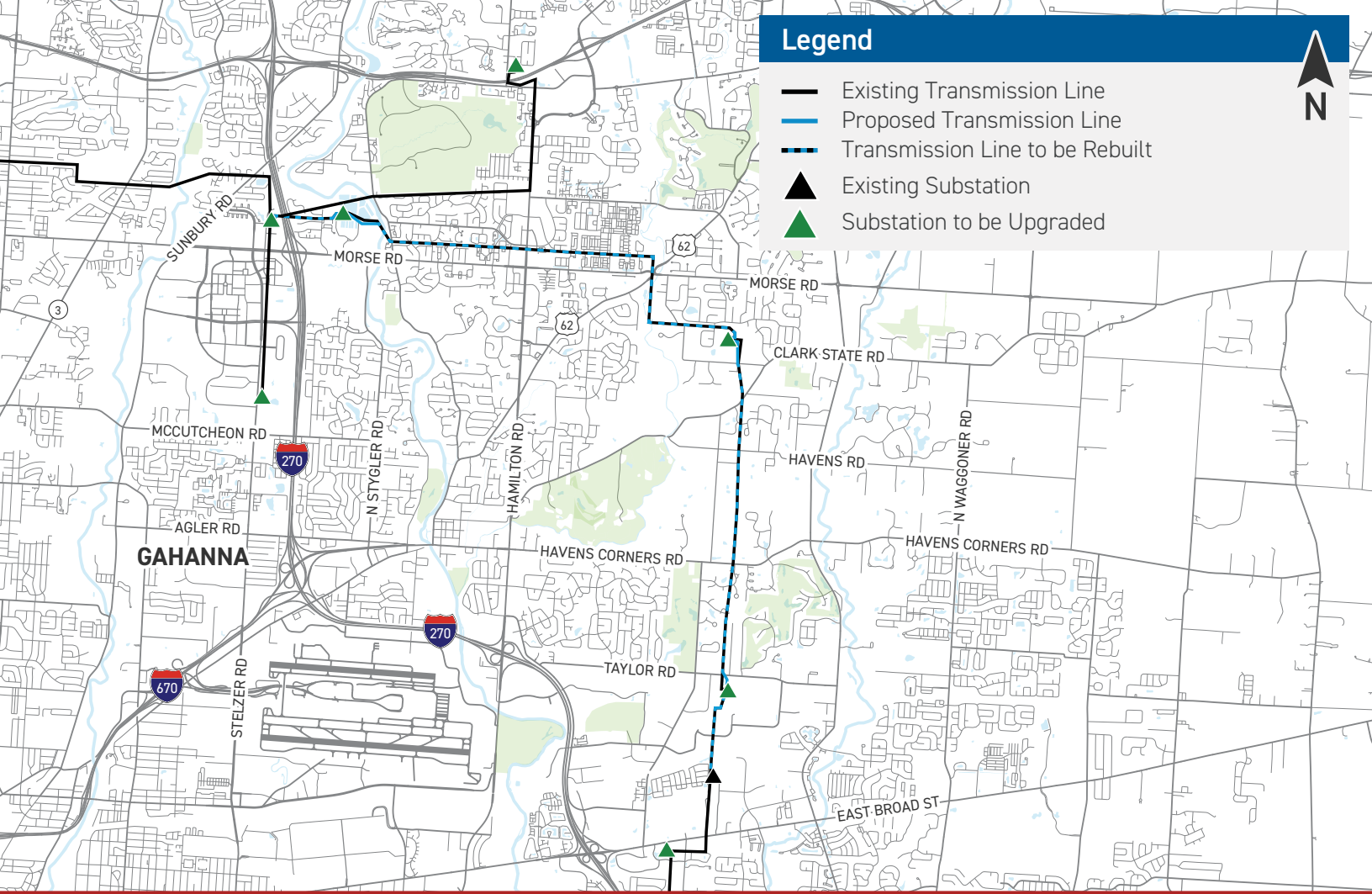
AEP Ohio right-of-way representatives plan to contact affected landowners regarding surveys, field work inside easements along the transmission line route and construction. Some pre-construction activities include:

- Trimming or removing trees and woody-stemmed vegetation.
- Removing or relocating non-habitable structures from the right-of-way.

Project Schedule



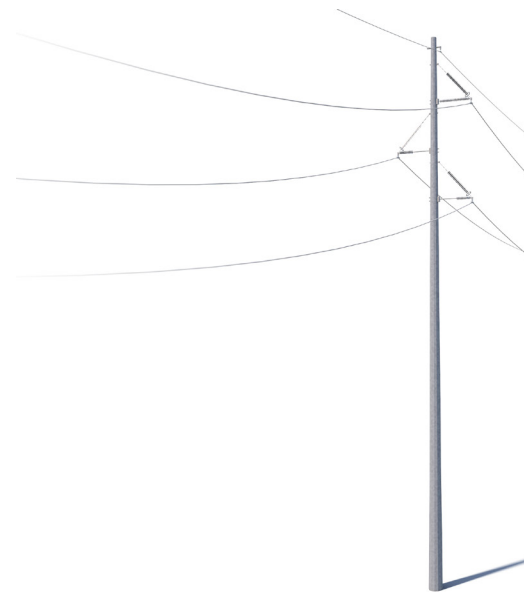
*Ohio Power Siting Board Timeline subject to change.



Typical Structures

Crews plan to rebuild the line using single steel poles.

Structure Height: Approximately 75-95 feet*
 Right-of-Way Width: 50-100 feet*



*Right-of-way widths will vary throughout the transmission line.
 **Exact structure and height requirements may vary.



We value your input. Please send comments and questions to:

AEP Ohio Outreach Team
 AEPOhio_Outreach@AEP.com • 614-933-2998