

LAMPING-WOODSFIELD

TRANSMISSION LINE PROJECT



AEP Ohio representatives plan power grid upgrades to improve electric reliability for customers in Monroe County. The Lamping-Woodsfield Transmission Line Project involves building about 10 miles of 69-kilovolt transmission line and upgrading a substation.

WHAT

The project involves:

- Building about 10 miles of power line
- Upgrading a substation

WHY

The improvements:

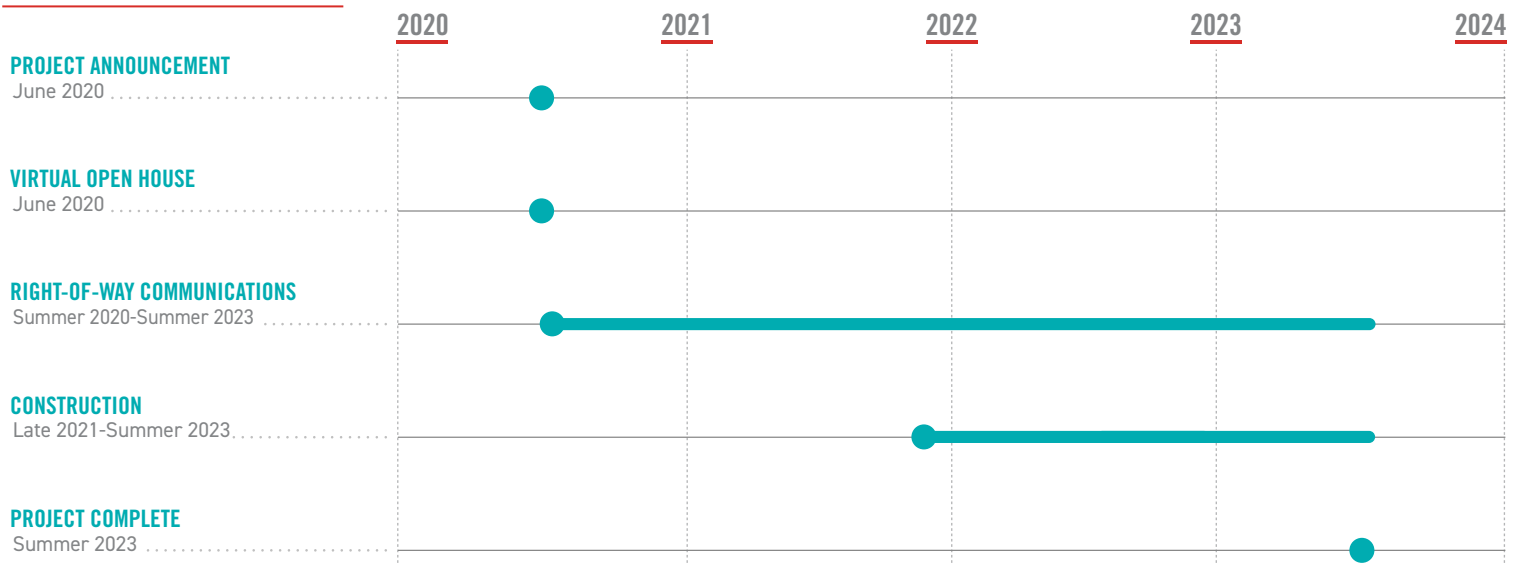
- Provide an additional power source
- Strengthen the electric transmission system
- Reduce the likelihood of power outages
- Speed recovery of service when outages occur

WHERE

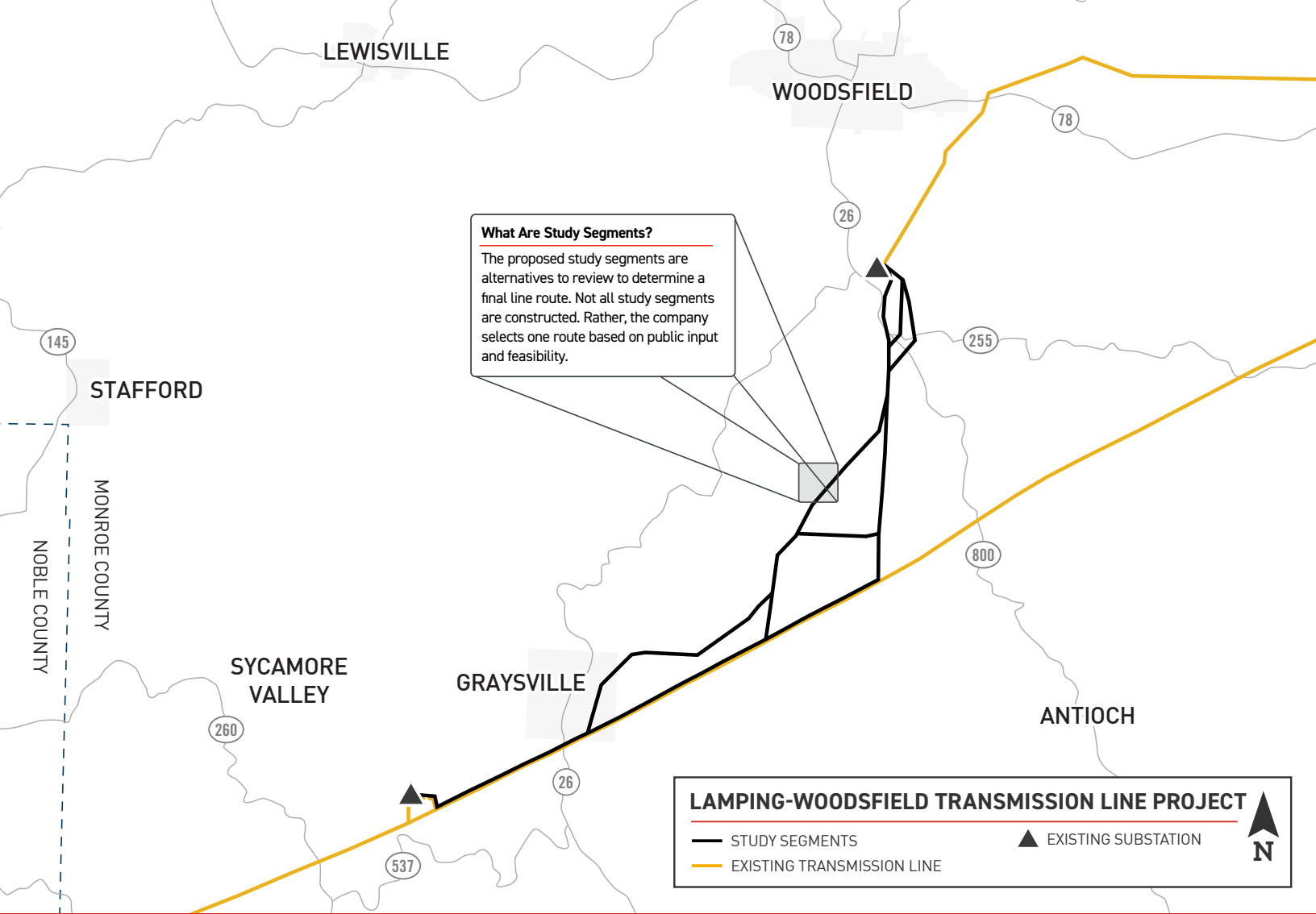
The project area includes Washington, Perry, Wayne and Center townships in Monroe County.



PROJECT SCHEDULE



*Timeline subject to change.



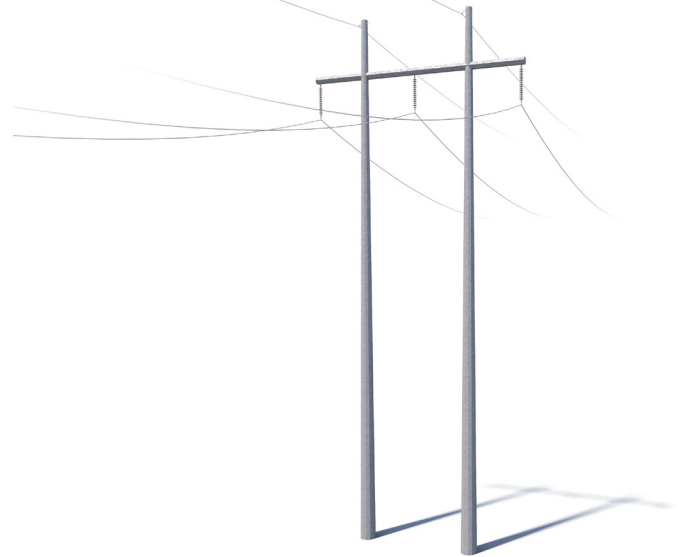
TYPICAL STRUCTURES

This project involves the use of steel, H-frame structures.

Structure Height: **Approximately 70 feet***

Right-of-Way Width: **Approximately 60 feet***

*Exact structure, height and right-of-way requirements may vary



AEP OHIO VALUES YOUR INPUT ABOUT THIS PROJECT. PLEASE SEND COMMENTS AND QUESTIONS TO:

✉ AEP Ohio
 c/o AEP Ohio Outreach Team
 8500 Smiths Mill Road
 New Albany, OH 43054

✉ AEPOhio_Outreach@aep.com
 ☎ 614-933-2998
 📍 AEPOhio.com/Lamping-Woodsfield

