

# NILES AREA TRANSMISSION IMPROVEMENTS PROJECT: NILES SOUTH

Indiana Michigan Power representatives plan to upgrade the electric transmission grid in Berrien and Cass counties in Michigan and St. Joseph County in Indiana. The Niles Area Transmission Improvements Project involves power line and substation improvements in several components. The Niles South component, located in St. Joseph County, Indiana, involves building one new substation, approximately 1 mile of 138-kilovolt (kV) transmission line and a half-mile of 69-kV transmission line.

## WHAT

The Niles South component involves:

- Building the 138-kV Boundary Substation located off Auten Road in South Bend
- Building approximately 1 mile of 138-kV transmission line
- Building a half-mile of 69-kV transmission line

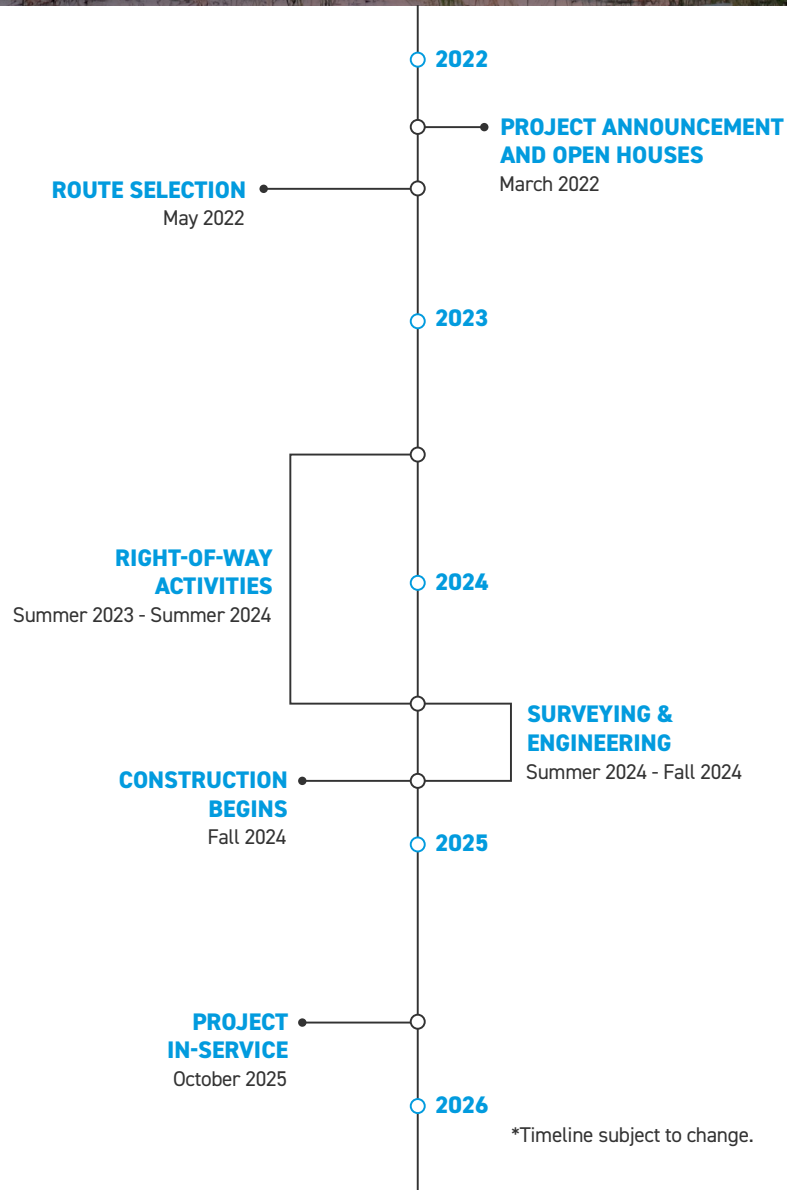
## WHY

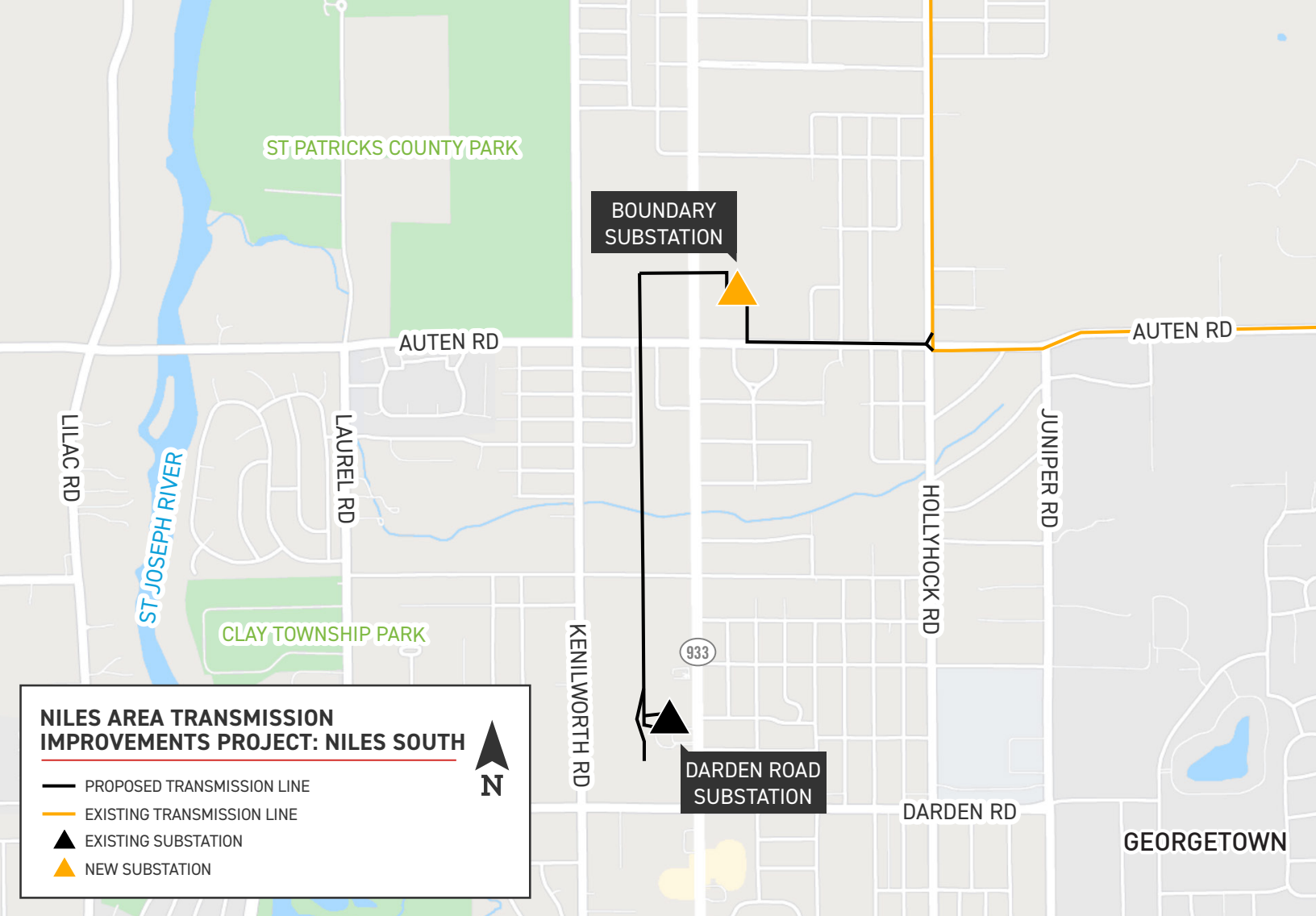
Project benefits include:

- Strengthens the local transmission grid and improves electric reliability for customers in the area
- Enhances electrical capacity to serve area customers by adding a new power source to the area
- Reduces community-sustained outages in the area

## WHERE

The project begins at an existing substation located just north of Darden Road and extends north approximately 1 mile to the proposed Boundary Substation. The project continues east a half-mile to connect to an existing power line near Auten Road.



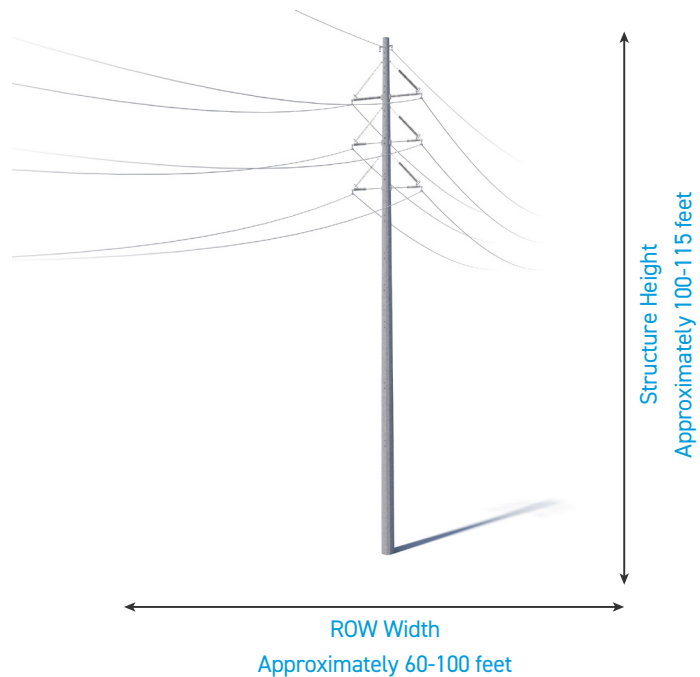


## TYPICAL STRUCTURES

Plans call for the new line to be built using mostly steel single poles.

Structure Height: [Approximately 100-115 feet](#)

Right-of-Way Width: [Approximately 60-100 feet](#)



Exact structure, height, and right-of-way requirements may vary.

**WE VALUE YOUR INPUT. PLEASE SEND COMMENTS AND QUESTIONS TO:**

KIA CLAY • PROJECT OUTREACH SPECIALIST

KCLAY1@AEP.COM • 614-933-2367

INDIANAMICHIGANPOWER.COM/NILESAREA-SOUTH