

LIEBERMAN - LONGWOOD TRANSMISSION IMPROVEMENTS PROJECT

Southwestern Electric Power Company (SWEPCO) representatives plan to strengthen the local electric transmission system in northwest Louisiana by rebuilding a 138-kilovolt (kV) transmission line.

WHAT

The Lieberman - Longwood Transmission Improvements Project involves:

- Rebuilding 7.8 miles of transmission line between Longwood Substation and the south shore of Caddo Lake
- Replacing wires on a 1.8-mile section over Caddo Lake that was rebuilt using steel poles in 2002
- Managing trees and woody-stemmed plants that have grown within SWEPCO's right-of-way

WHY

The transmission line was constructed in 1946 and is past its planned service life. The project:

- Replaces deteriorating wooden poles with modern steel poles
- Upgrades the wires on poles that were replaced in 2002
- Strengthens the system against severe weather impacts
- Decreases the likelihood and duration of wide, community-sustained outages
- Removes vegetation that could impact the safe operation of the transmission line

WHERE

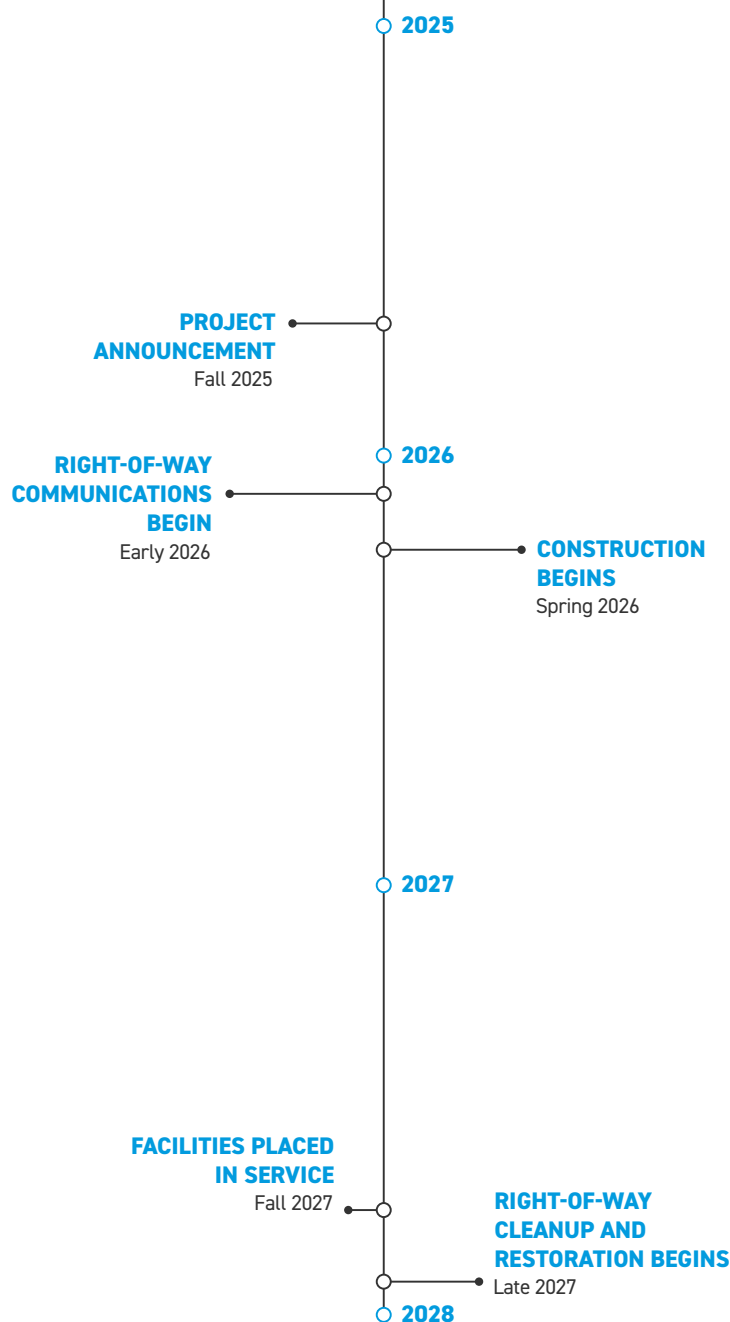
The existing transmission line extends between SWEPCO's Blanchard Substation, located near UOP LLC Shreveport Plant and Longwood Substation, located off Parish Road 6.

BEFORE CONSTRUCTION:

A right-of-way agent may contact you if SWEPCO needs to acquire new or update existing easements on your property. You will also be contacted should crews need to access your property for survey work or construction.

To safely perform their work, crews may need to:

- Remove woody-stemmed vegetation from the right-of-way
- Install temporary gates, fencing and access roads
- Install culverts for water management



Timeline subject to change.

TYPICAL STRUCTURES

SWEPCO crews plan to install single-pole steel structures.

Typical Structure Height:

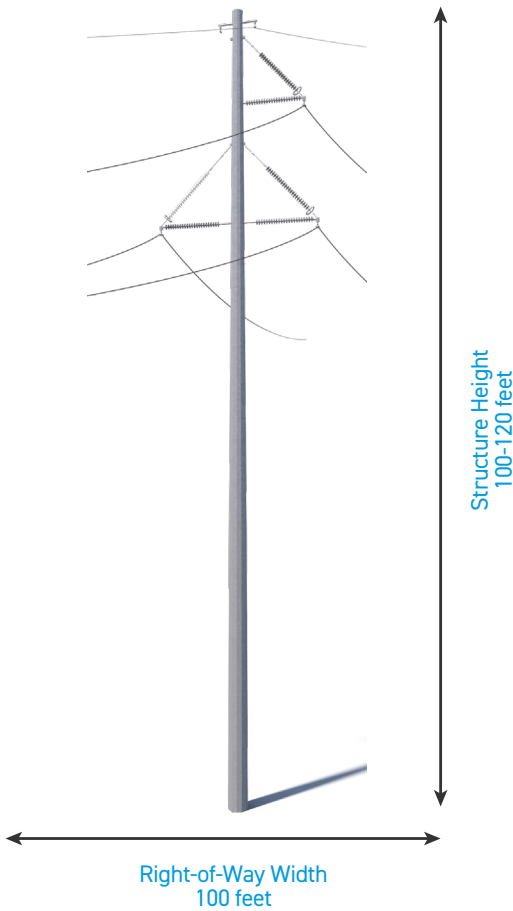
100-120 feet

Typical Right-of-Way Width:

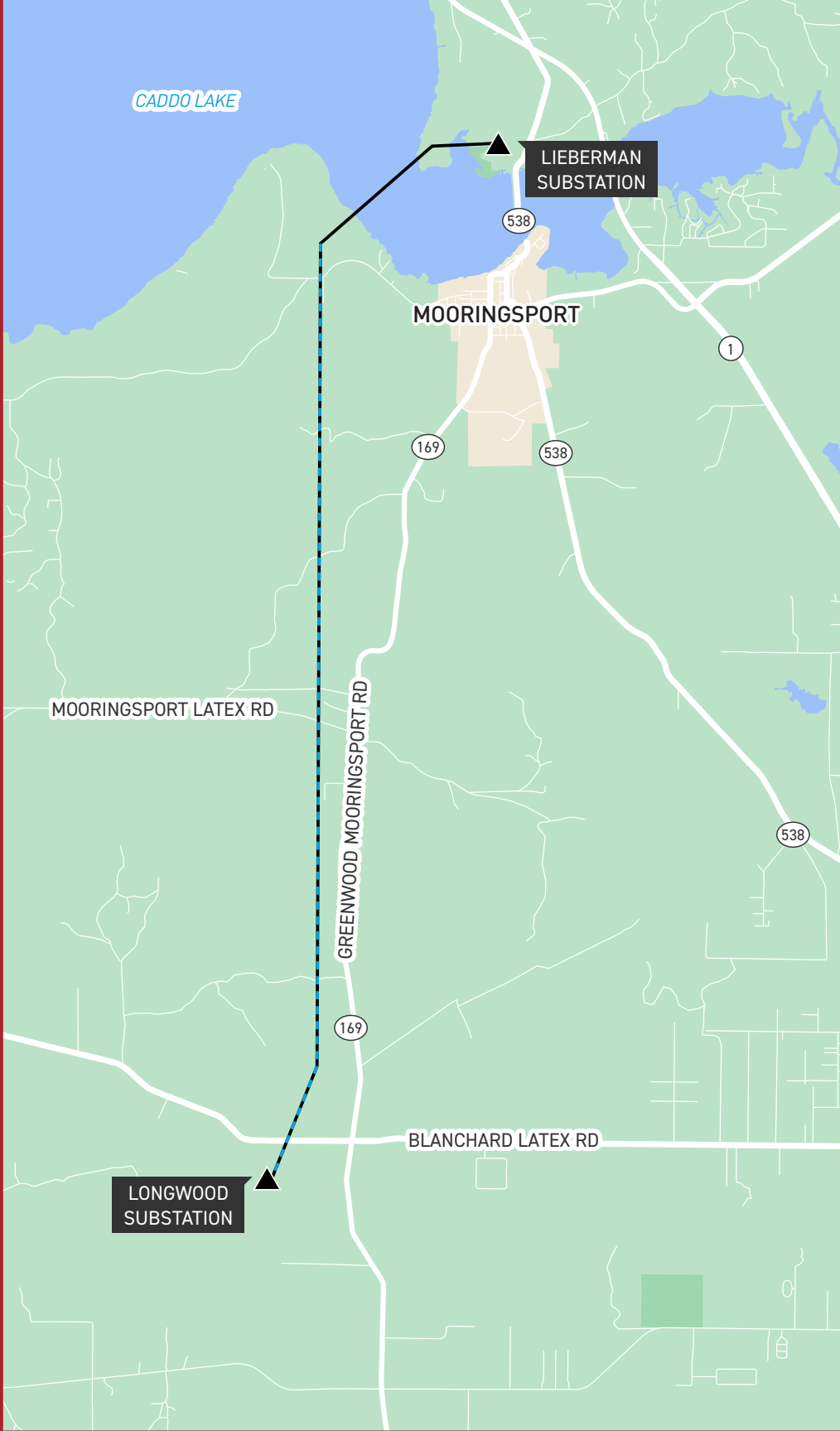
100 feet

Typical Distance Between Structures:

500-700 feet



*Exact structure, height and right-of-way requirements may vary.



LIEBERMAN - LONGWOOD TRANSMISSION IMPROVEMENTS PROJECT

- TRANSMISSION LINE TO BE REBUILT
- ▲ EXISTING SUBSTATION



WE VALUE YOUR INPUT. PLEASE SEND COMMENTS AND QUESTIONS TO:
KATELYN HAHN • PROJECT OUTREACH SPECIALIST
SWEPCO_OUTREACH@AEP.COM • 918.313.8240
SWEPCO.COM/LIEBERMAN-LONGWOOD

