

ELLERBE ROAD - FERN TRANSMISSION LINE REBUILD PROJECT

SWEPCO plans to strengthen the electric grid in Shreveport by replacing or relocating approximately 2.5 miles of 69-kilovolt (kV) transmission line.

WHAT

The Ellerbe Road - Fern Transmission Line Rebuild Project involves:

- Replacing or relocating approximately 2.5 miles of 69-kilovolt (kV) transmission line
- Improvements to the Ellerbe Road and Fern Street substations
- Managing trees and woody-stemmed vegetation that have grown within SWEPCO's right-of-way

WHY

The line is nearly 60 years old and is past its planned service life.

The project:

- Upgrades deteriorating wooden poles to modern steel poles
- Strengthens the system against severe weather and decreases the likelihood and duration of wide, community-sustained outages
- Provides additional power capacity to accommodate regional growth

WHERE

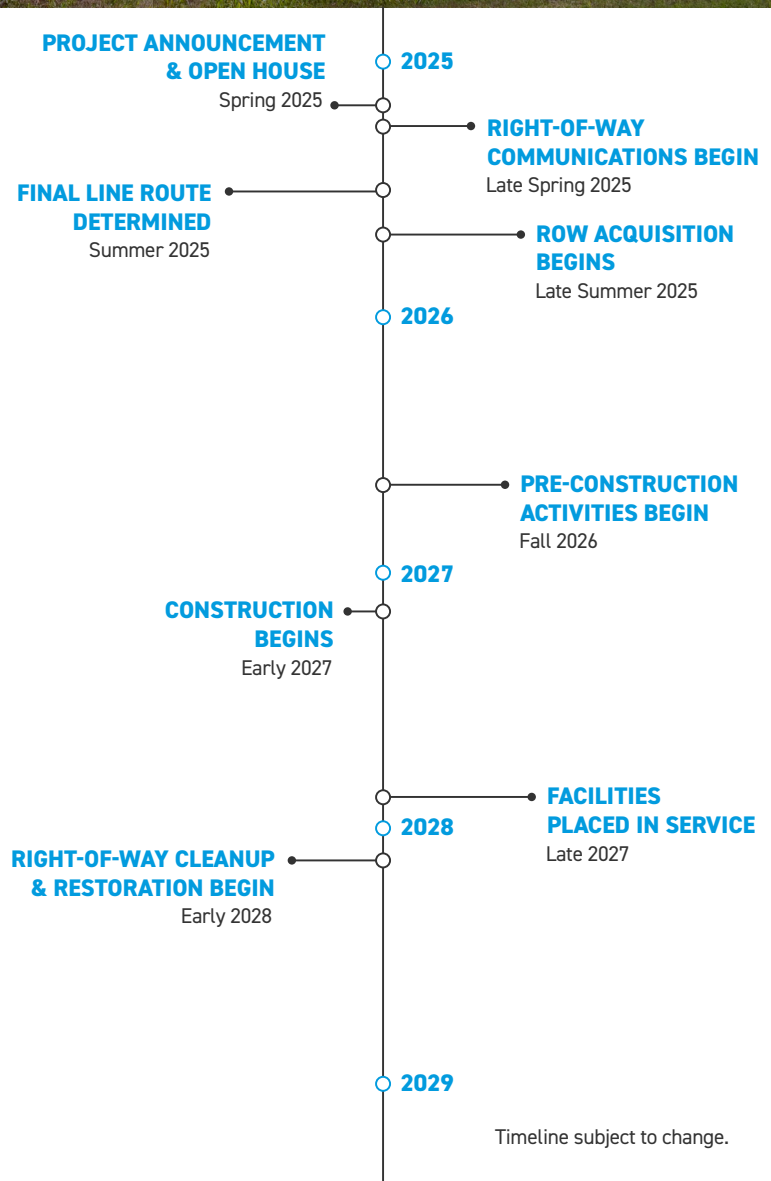
The existing transmission line extends between SWEPCO's Ellerbe Road Substation, located near the A.B. Palmer Recreation Center, and the Fern Street Substation, located north of the Pierremont Plaza shopping center.

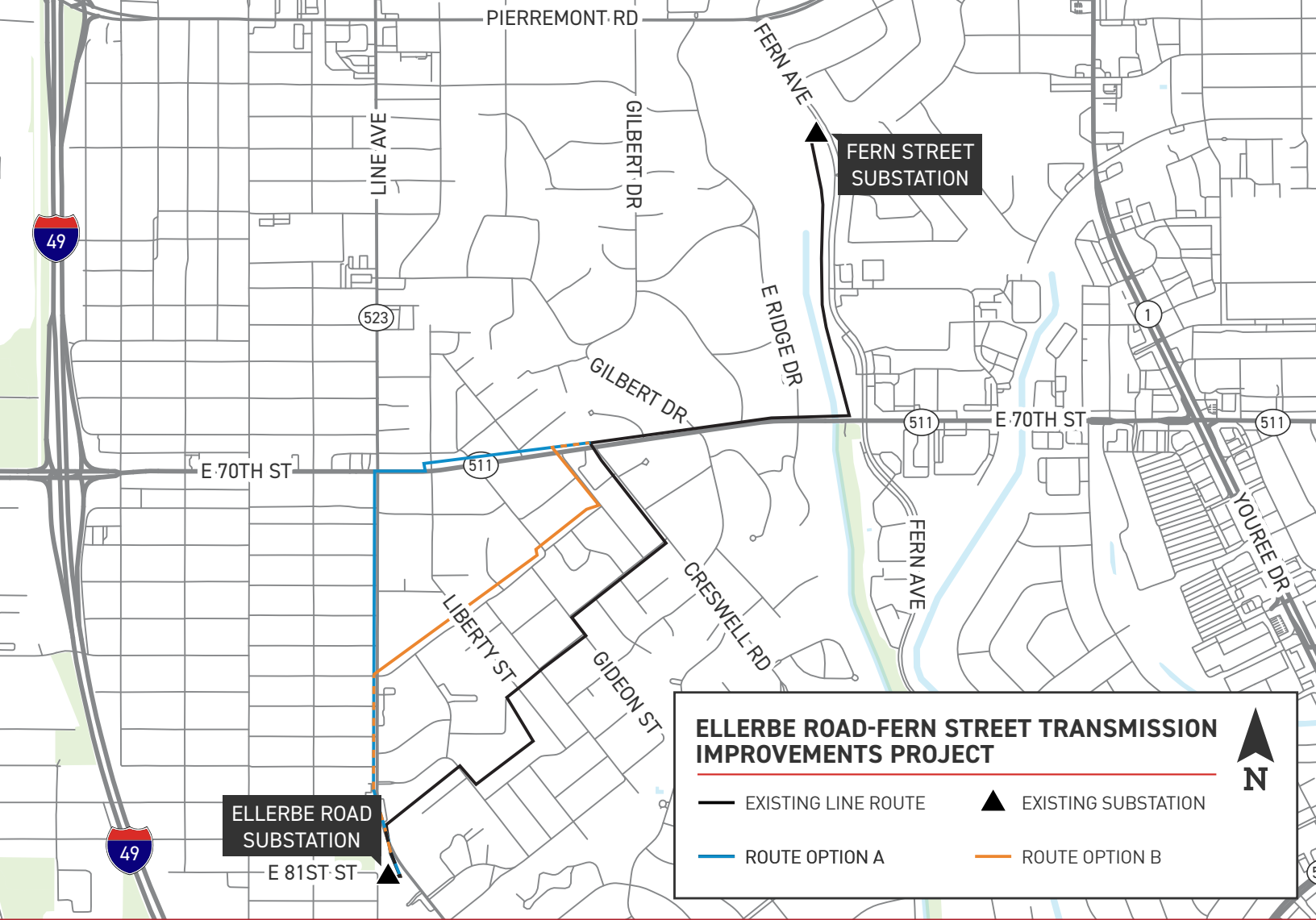
SWEPCO is evaluating options to replace the existing line, or to relocate it to accommodate development that's taken place since its construction.

SELECTING A ROUTE:

SWEPCO invites the public to provide feedback on the project and proposed route options. SWEPCO then determines which route will be constructed based on many factors, including:

- Landowner input
- Land use
- Environmental impacts
- Other utilities and infrastructure





TYPICAL STRUCTURES

Crews plan to install single-pole steel structures.

Typical Structure Height: 75 - 90 feet

Typical Distance Between Structures: 250 - 350 feet

*Exact structure types, height requirements and right-of-way widths may vary.



WE VALUE YOUR INPUT. PLEASE SEND COMMENTS AND QUESTIONS TO:

MICHAEL HARRIS • PROJECT OUTREACH SPECIALIST

SWEPCO_OUTREACH@AEP.COM • (318) 673-3400

SWEPCO.COM/ELLERBE-FERN