

Elcona Expansion and Transmission Line Project

Indiana Michigan (I&M) Power representatives plan power grid upgrades in Elkhart, Indiana. The Elcona Line and Transformer Addition Project involves expanding a substation and building approximately 2 miles of transmission line to enhance electric reliability for area customers.

What

- Expanding and upgrading Elcona Substation on Middlebury Street.
- Building approximately 2.3 miles of new 138-kilovolt transmission line to connect Elcona Substation to an existing line.
- Retiring approximately 0.5 miles of existing transmission line.

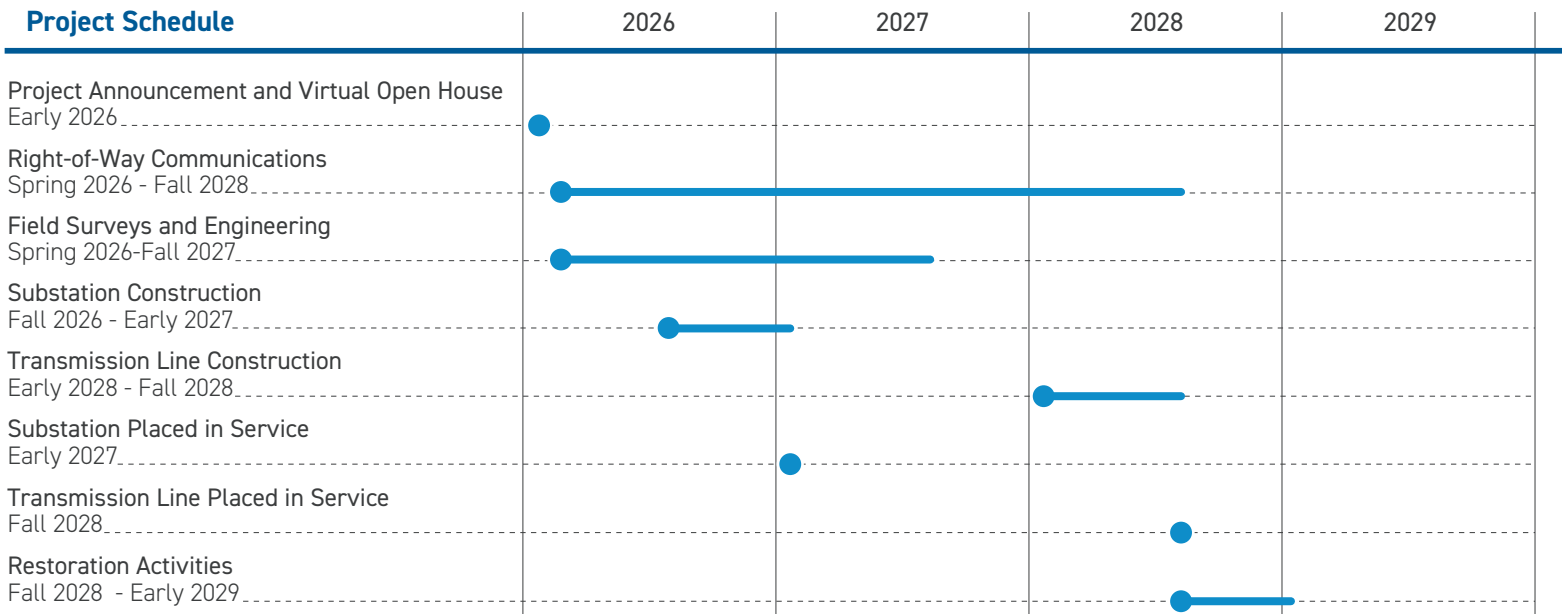
Why

- The project benefits include:
- Meeting the growing industrial load demand for the area.
 - Strengthening the reliability and performance of the electric system.
 - Retiring aging infrastructure to reduce ongoing maintenance costs.

Where

- The project area includes:
- City of Elkhart
 - Elkhart County
 - Concord Township

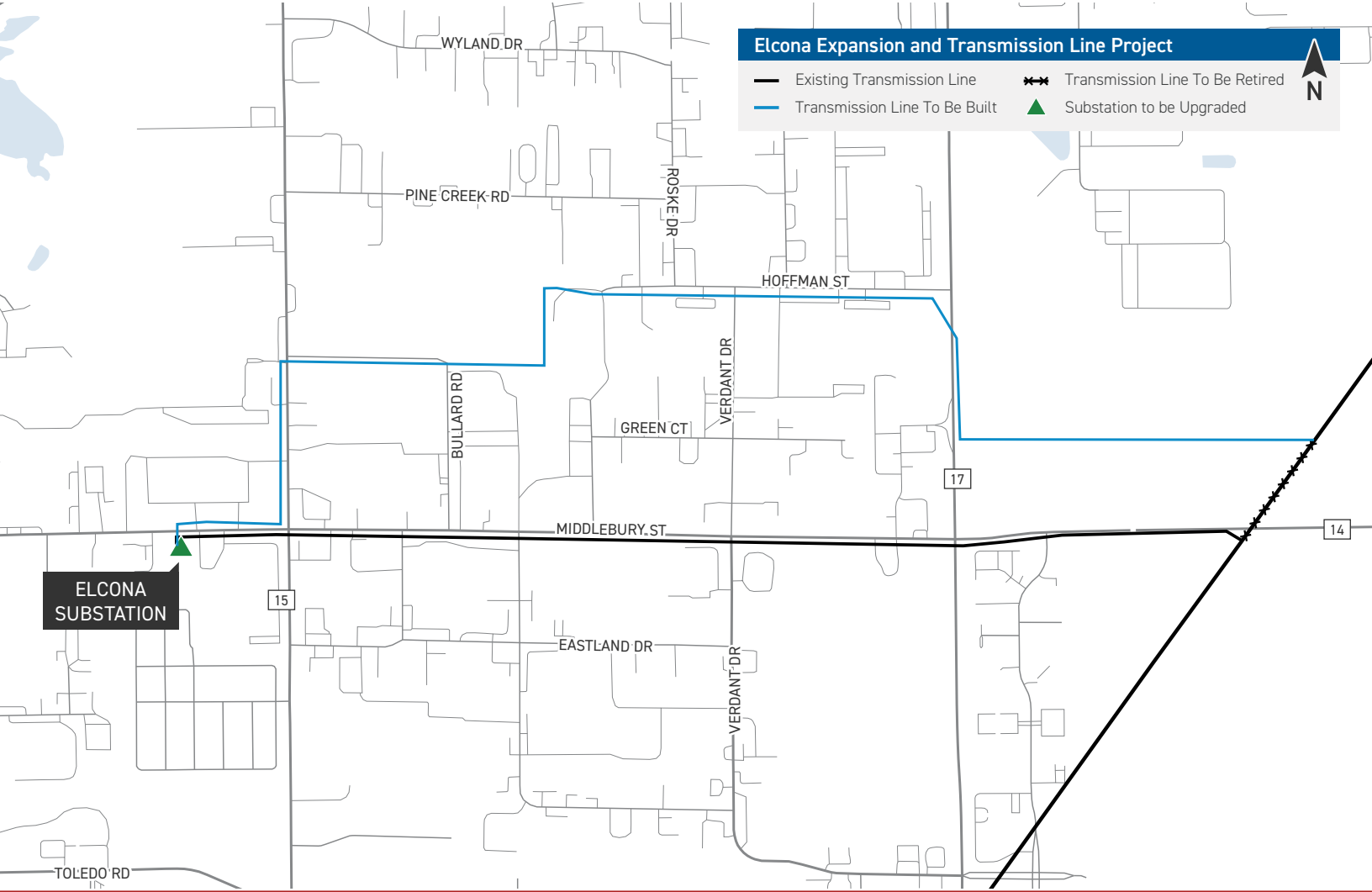
Project Schedule



*Timeline subject to change.

Elcona Expansion and Transmission Line Project

- Existing Transmission Line
- Transmission Line To Be Built
- ✖✖✖ Transmission Line To Be Retired
- ▲ Substation to be Upgraded

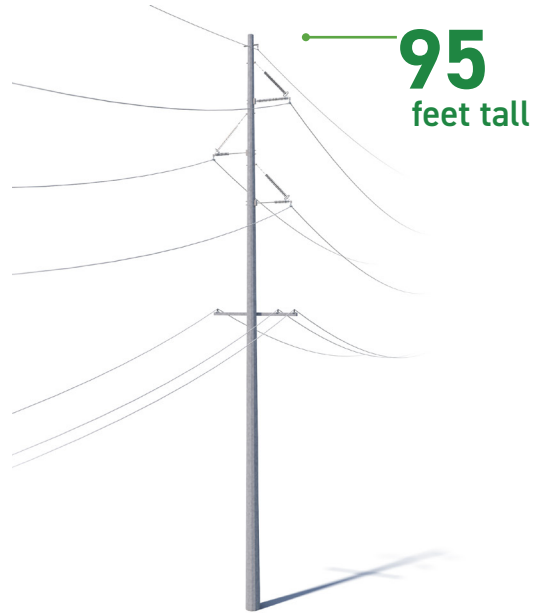


ELCONA
SUBSTATION

Typical Structures

This project involves installing steel poles.

Right-of-Way Width: 100 Feet
Structure Height: 95 Feet



**Exact structure, height, and right-of-way requirements may vary.*



We value your input. Please send comments and questions to:

WSP Representing I&M
outreach@aepttransmission.com • 833-689-3375

IndianaMichiganPower.com/Elcona