

JEROME EXTENSION PROJECT

AEP Ohio representatives plan power grid upgrades in Jerome Township. The project involves building Jerome Substation and about 1.5 miles of power line to provide power to a customer facility and help meet the area's growing electrical load demand.

WHAT

This project involves:

- Building about 1.5 miles of 138-kilovolt (kV) transmission line between an existing power line and Jerome Substation
- Building Jerome Substation

*This project requires Ohio Power Siting Board (OPSB) approval.

WHY

The project provides power to Jerome Substation, which supplies power to a customer facility and helps meet the area's growing electrical load demand.

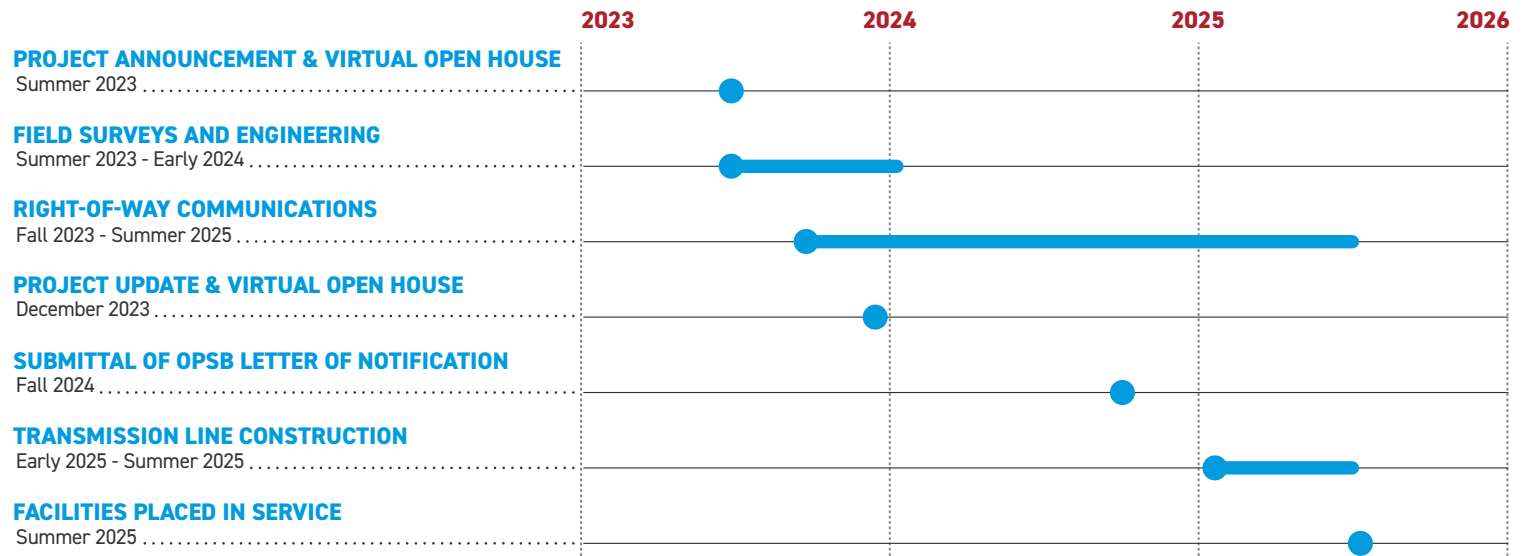
WHERE

The project area includes Jerome Township, Union County.

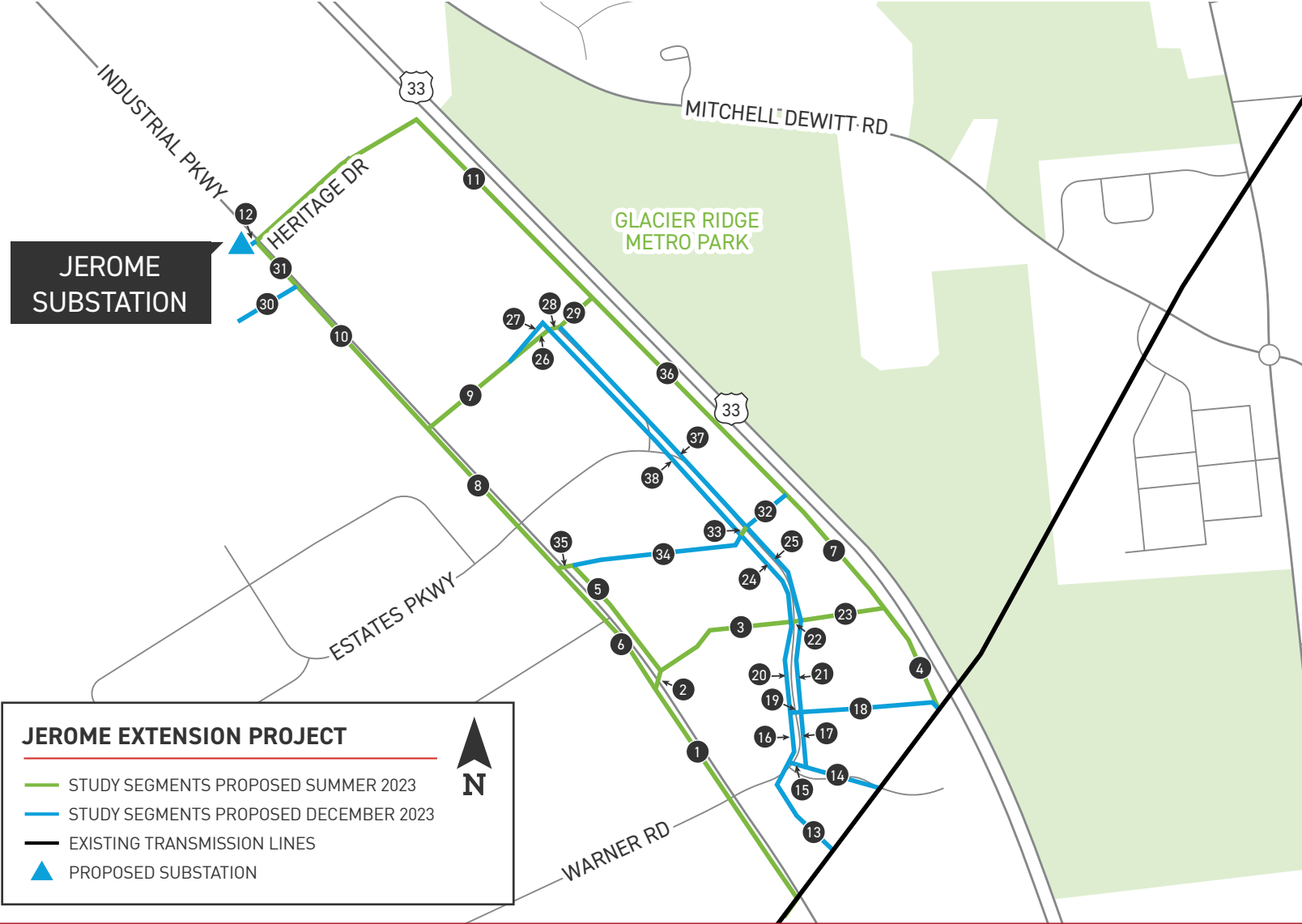
Company representatives plan to evaluate possible study segments* to help determine the location of the new power line. Input from the community helps determine the location of the power line.

*Study segments are various options presented to help decide the best route. Company representatives don't build all the segments. Instead, they pick one routes based on public feedback and feasibility.

PROJECT SCHEDULE



*Timeline subject to change.

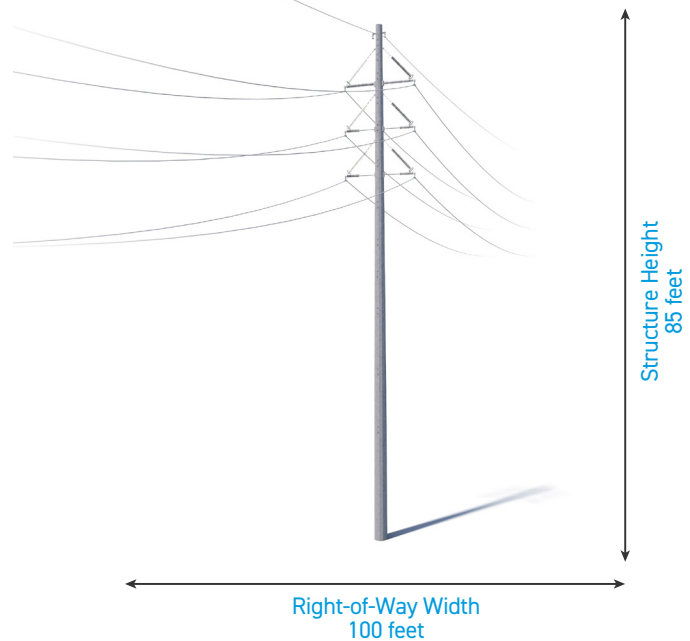


TYPICAL STRUCTURES

The project involves the use of single steel poles.

Pole Height: 85 feet*

Right-of-Way Width: 100 feet*



*Exact structure, height, and right-of-way requirements may vary.

**Some structures will be custom steel poles

WE VALUE YOUR INPUT. PLEASE SEND COMMENTS AND QUESTIONS TO:

JOE DEMAREE · PROJECT OUTREACH SPECIALIST

JKDEMAREE@AEP.COM · 614-933-2998

AEP OHIO.COM/JEROMEEXTENSION

