

SABINE PARISH TRANSMISSION IMPROVEMENTS PROJECT

SWEPCO officials plan to enhance the local power grid in northwest Louisiana. These enhancements support economic development in the area and ensure continued reliable service for area customers.

WHAT

The project involves:

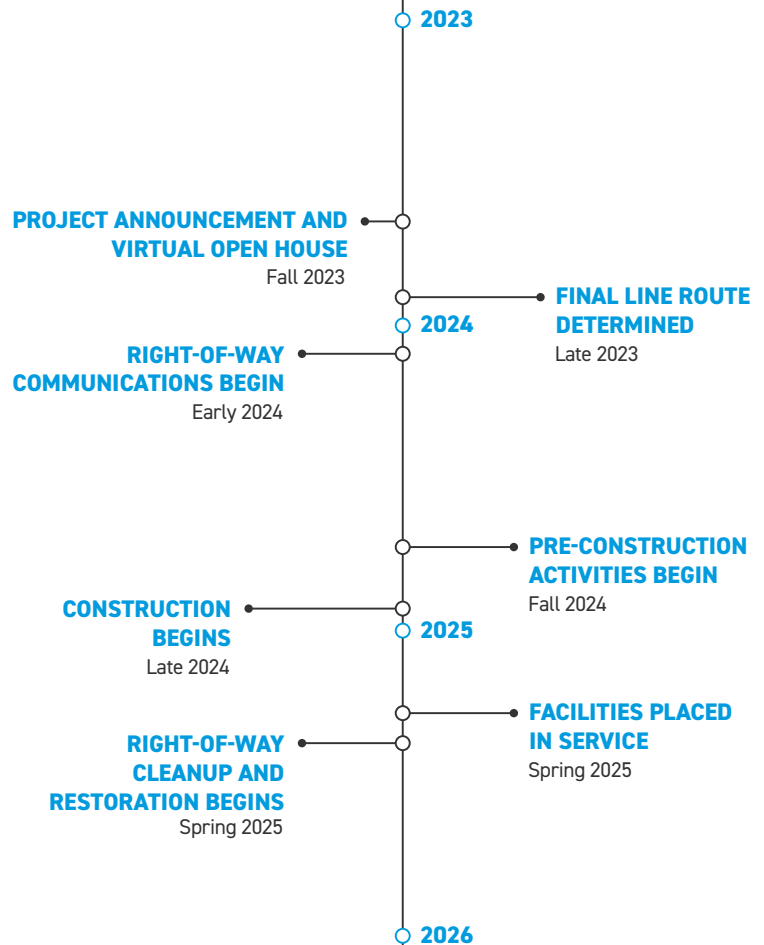
- Building a new substation
- Building approximately 8 miles of 69-kilovolt (kV) transmission line
- Acquiring 80-foot-wide easements for the new power line
- Clearing trees and other woody-stemmed vegetation from within the 80-foot right-of-way

WHY

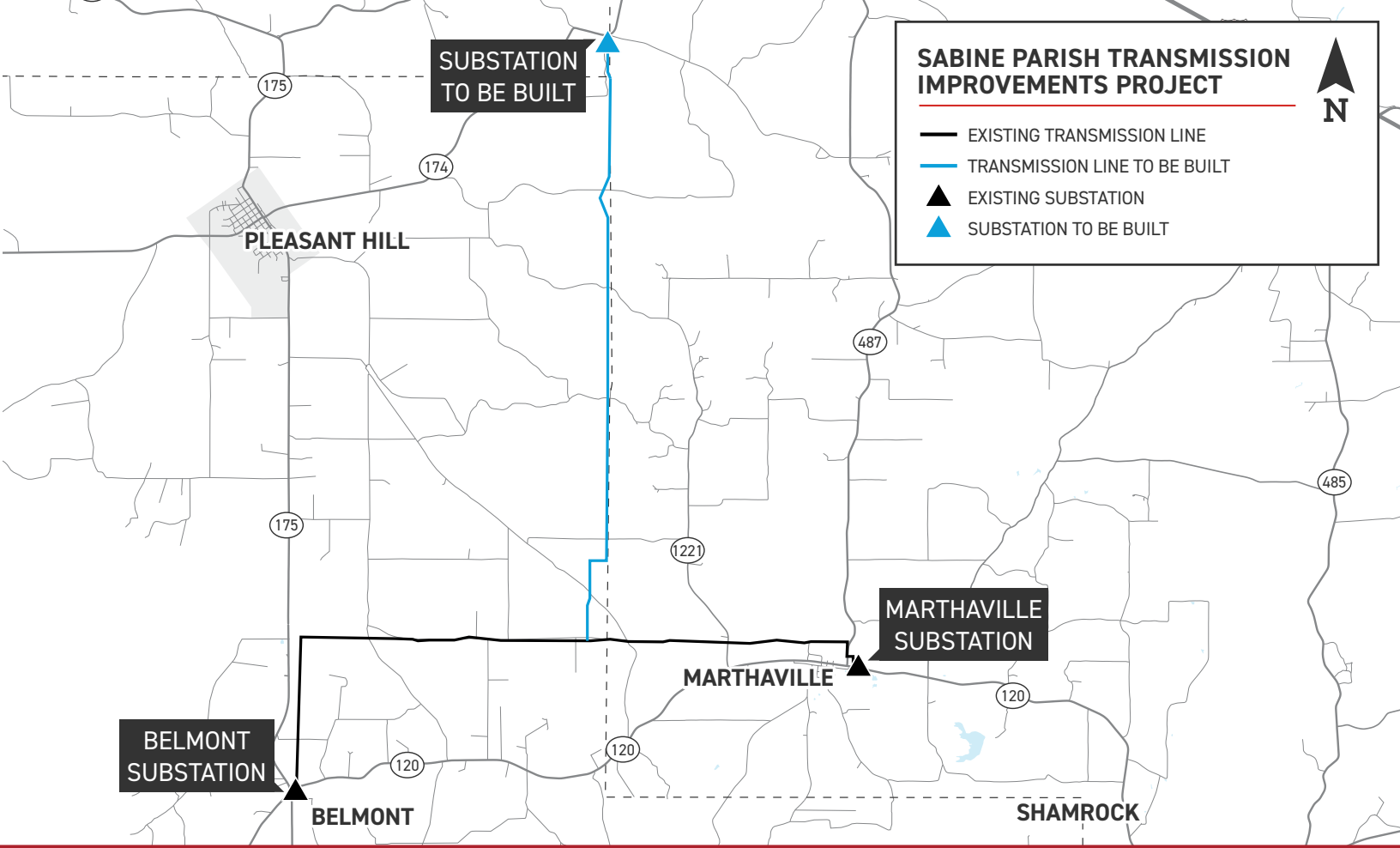
The area's growing electrical demand requires and additional power source to support new and existing customers in northwest Louisiana. The new substation and power line support the additional power demand and ensure the local power grid remains strong and resilient.

WHERE

The transmission line route connects SWEPCO's Belmont - Marthaville transmission line to the proposed Asteroid Substation in northeast Sabine Parish.



Timeline subject to change.



TYPICAL STRUCTURES

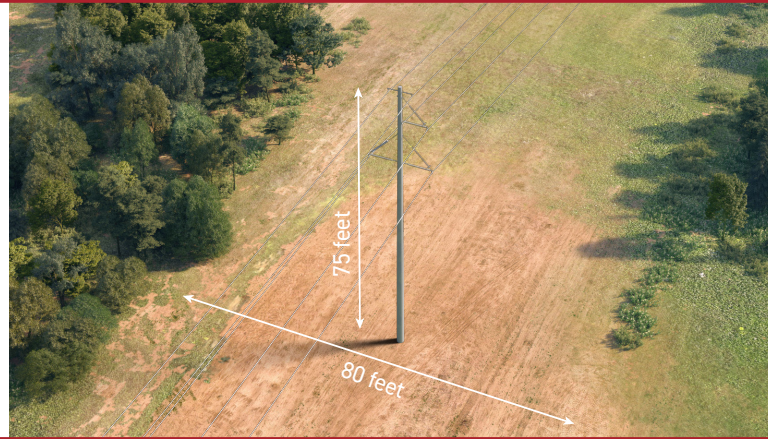
SWEPCO crews plan to install single-pole steel structures.

Typical Height: 75 feet

Typical Distance Between Structures: 400 feet

Typical Right-of-Way Width: 80 feet

*Exact structure, height, and right-of-way requirements may vary.



TYPICAL SUBSTATION

Proposed Substation Footprint: 220 feet by 200 feet



WE VALUE YOUR INPUT. PLEASE SEND COMMENTS AND QUESTIONS TO:

MICHAEL HARRIS · PROJECT OUTREACH SPECIALIST

MHHARRIS@AEP.COM · 918-231-8047

SWEPCO.COM/SABINEPARISH

