

KINGSTON - GRAVEL POINT TRANSMISSION IMPROVEMENTS PROJECT

Southwestern Electric Power Company (SWEPCO) representatives plan to rebuild and upgrade approximately 5 miles of power transmission line. The project strengthens the regional electrical system and helps ensure safe, reliable service in the DeSoto Parish region.

WHAT

The Kingston - Gravel Point Transmission Improvements Project involves replacing approximately 5 miles of 69-kilovolt (kV) transmission line with 138-kV transmission line.

The project also includes upgrades to SWEPCO's Kingston and Gravel Point substations.

WHY

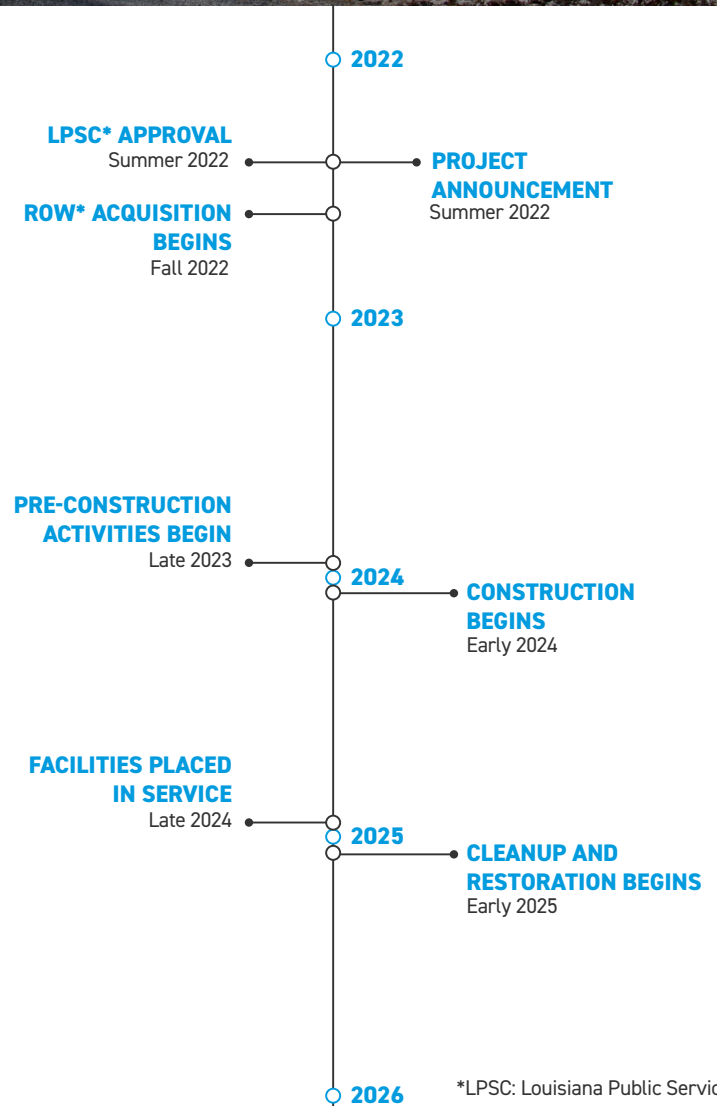
The transmission line was constructed in the 1950s and is past its planned service life.

The project:

- Replaces deteriorating wooden poles with modern steel poles
- Decreases the likelihood and duration of wide, community-sustained power outages
- Strengthens the system against severe weather
- Provides additional power capacity to accommodate regional growth

WHERE

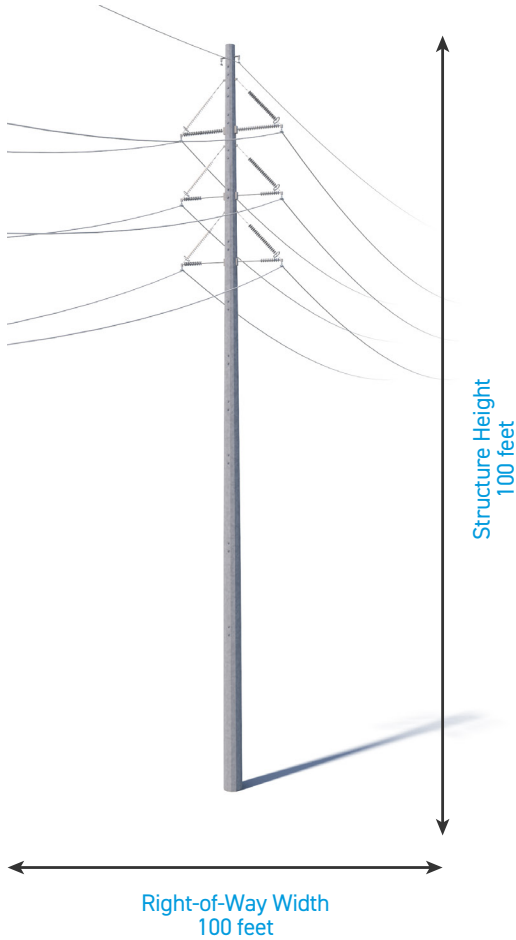
The transmission line stretches between the Kingston and Gravel Point substations, located in central DeSoto Parish.



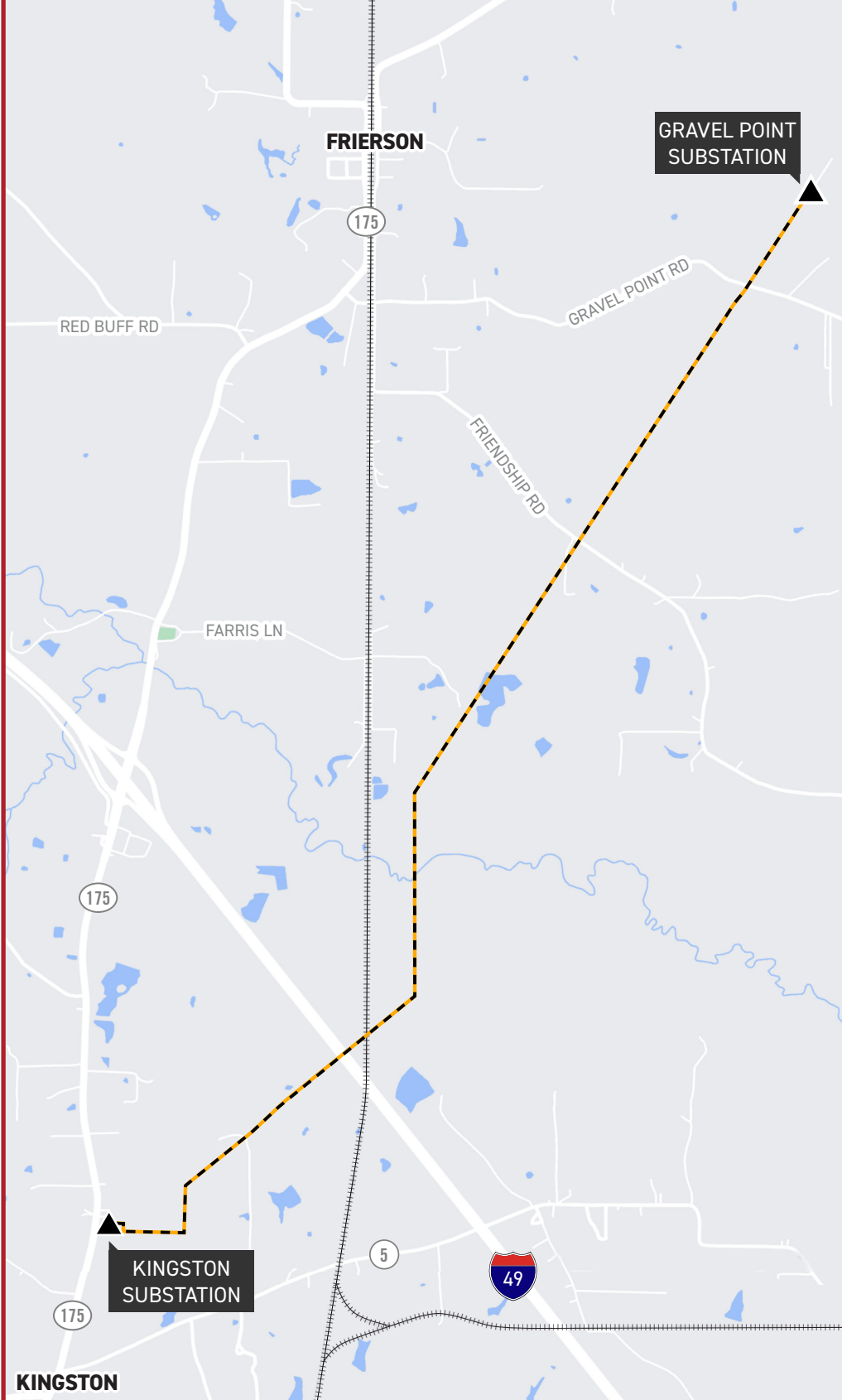
TYPICAL STRUCTURES

SWEPCO crews plan to install single-pole steel structures.

Typical Structure Height: 100 feet
 Typical Right-of-Way Width: 100 feet



*Exact structure, height, and right-of-way requirements may vary.



KINGSTON - GRAVEL POINT TRANSMISSION IMPROVEMENTS PROJECT

--- TRANSMISSION LINE TO BE REBUILT

▲ EXISTING SUBSTATIONS



WE VALUE YOUR INPUT. PLEASE SEND COMMENTS AND QUESTIONS TO:
 MICHAEL HARRIS · PROJECT OUTREACH SPECIALIST
 MHHARRIS@AEP.COM · 918-599-2553



BOUNDLESS ENERGY

07/05/2022