

# SOUTHERN MISHAWAKA AREA IMPROVEMENTS PROJECT



Indiana Michigan Power (I&M) officials plan to upgrade the electric transmission grid in Mishawaka, Indiana. The Southern Mishawaka Area Improvements project involves improvements to a local substation and upgrades to about 2 miles of power line to enhance reliability for area customers and accommodate city street-widening plans.

## WHAT

The project involves:

- Improving the Dragoon Substation near the intersection of South Taylor Street and East 13th Street
- Relocating about 1 mile of electric transmission line to the south side of East 12th Street to accommodate city street-widening plans
- Rebuilding about 1 mile of electric transmission line from Dragoon Substation to Mishawaka Utilities' Union Street Substation

Company representatives plan to rebuild the power line in the existing right-of-way, which may require acquiring new or updating existing property easements. Other sections of the project include re-routes that would require new easements. Easements are defined land rights that property owners grant the utility to allow for the safe construction, operation and maintenance of the power line.

## WHY

The project strengthens the electric transmission system by replacing deteriorating wooden poles with modern steel poles. The upgrade ensures the power lines comply with the company's structural standards, improves the lines' operational performance and reduces the need for frequent equipment repairs.

The power line relocation accommodates the city's plan to widen East 12th Street in this area.

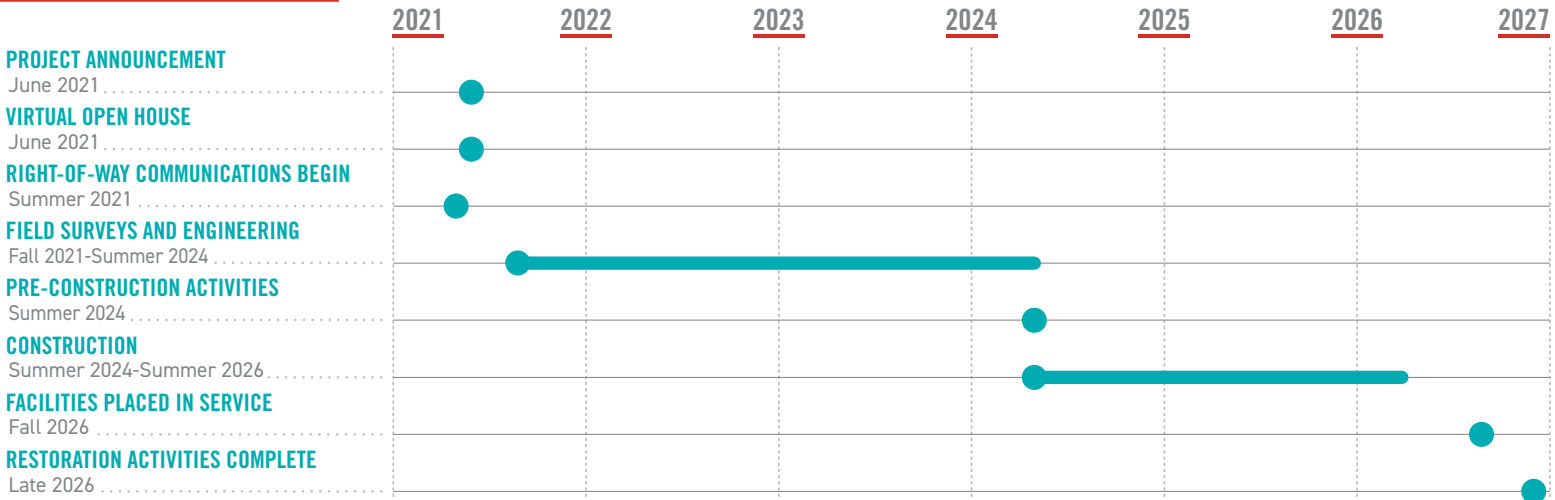
## WHERE

The project area includes:

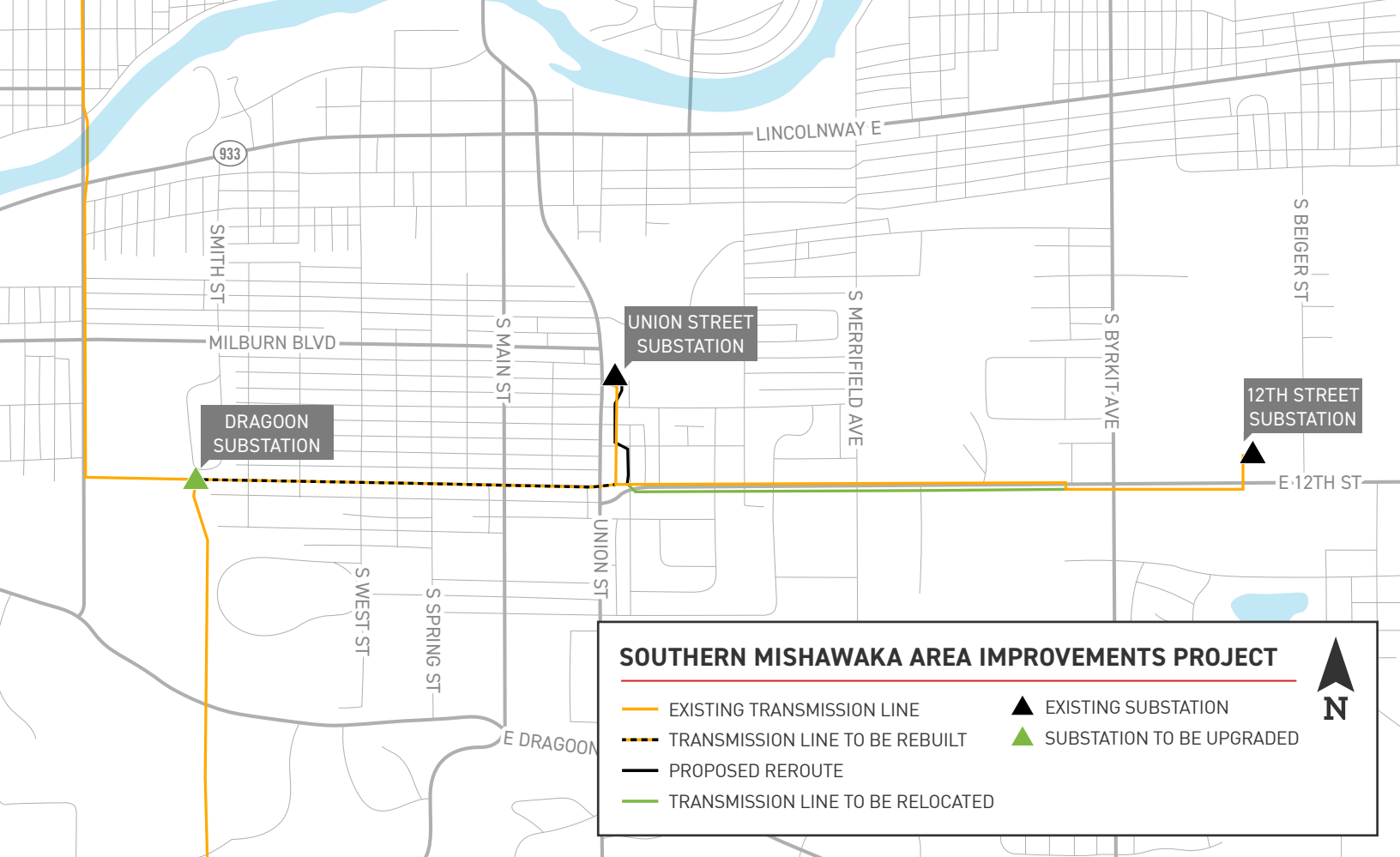
- City of Mishawaka
- St. Joseph County
- Penn Township



## PROJECT SCHEDULE



\*Timeline subject to change.

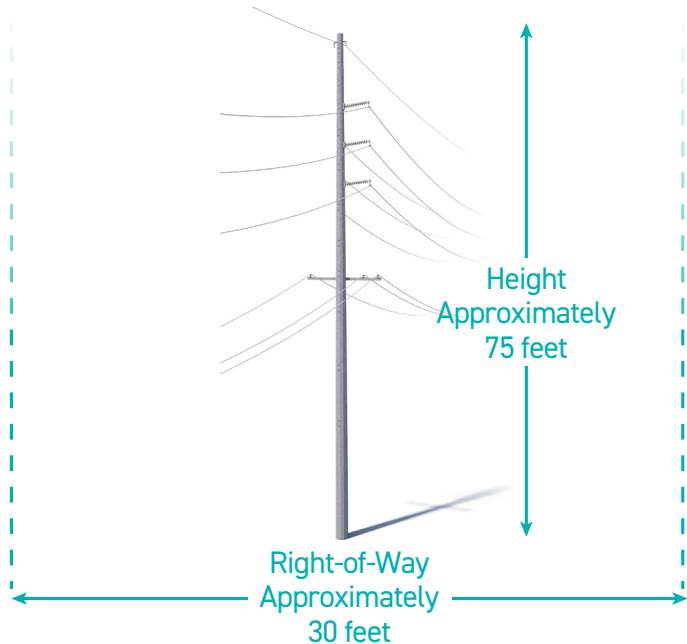


## TYPICAL STRUCTURES

The project involves installing steel poles.

Typical Pole Height: **Approximately 75 feet\***

Typical Right-of-Way Width: **Approximately 30 feet\***



\*Exact structure, height and right-of-way requirements may vary

**I&M VALUES YOUR INPUT ABOUT THIS PROJECT. PLEASE SEND COMMENTS AND QUESTIONS TO:**

✉ Indiana Michigan Power  
c/o Eric Giffey  
8500 Smith's Mill Rd  
New Albany, OH 43054

✉ [eagiffey@aepp.com](mailto:eagiffey@aepp.com)  
☎ (614) 736-8971  
➡ [IndianaMichiganPower.com/SouthernMishawaka](http://IndianaMichiganPower.com/SouthernMishawaka)

