

WHEELERSBURG AREA IMPROVEMENTS PROJECT

AEP Ohio representatives plan power grid upgrades in Scioto County. The upgrades enhance area electric reliability by adding another power source and replacing aging equipment with modern facilities. Crews expect to begin construction fall 2023 and conclude by spring 2026.

WHAT

The project involves:

- Building about 5 miles of 138-kilovolt (kV) power line
- Rebuilding about 2 miles of 138-kV power line
- Removing about 10 miles of transmission facilities
- Replacing Wheelersburg Substation located on Earwood Lane with Sweetgum Substation located near OH-522 and Mill Road
- Building Althea Substation located off Gallia Pike in Franklin Furnace

*This project involves Ohio Power Siting Board (OPSB) approval.

WHY

The improvements:

- Enhance electric service reliability for customers by providing an additional power source to meet the current power demand
- Replace deteriorating equipment from 1916 with modern facilities to ensure continued reliable electric service
- Upgrade the power grid and speed recovery of service when an outage occurs

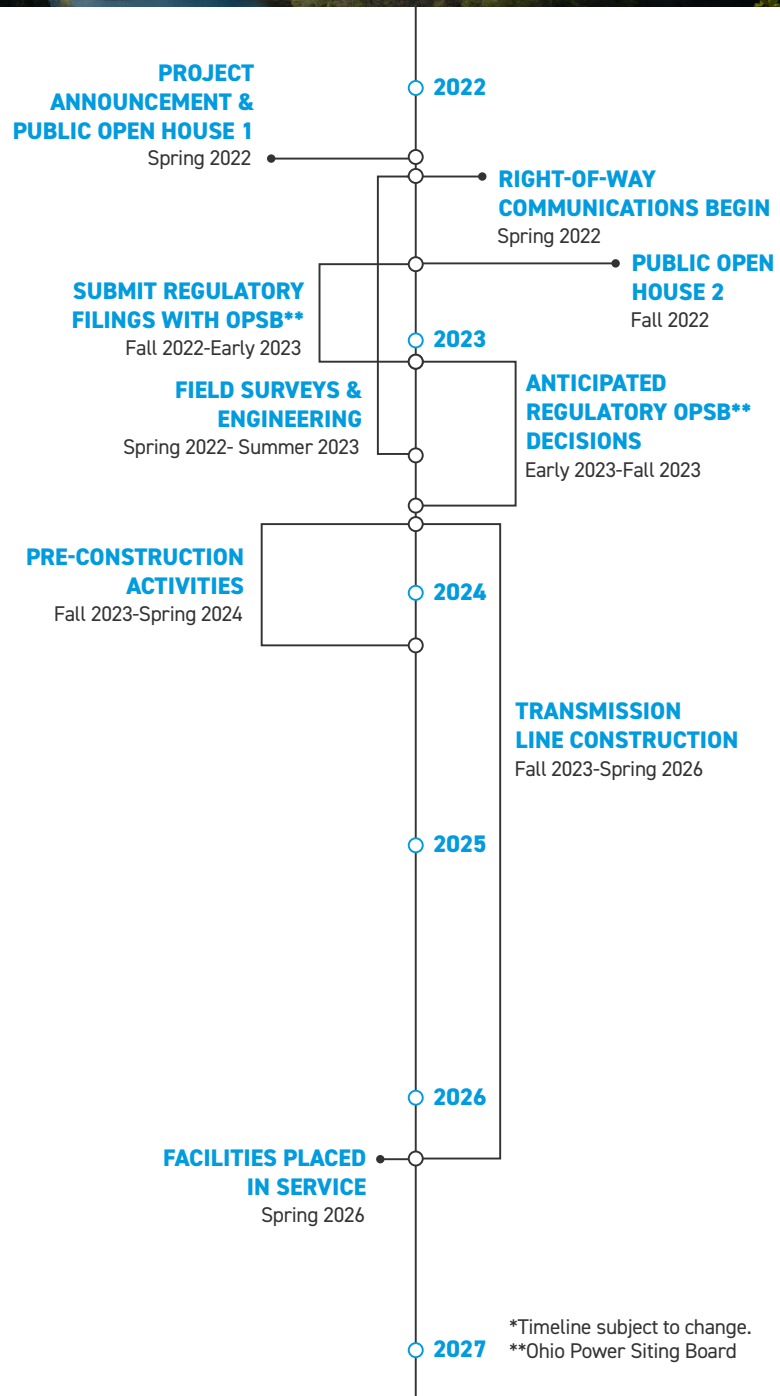
WHERE

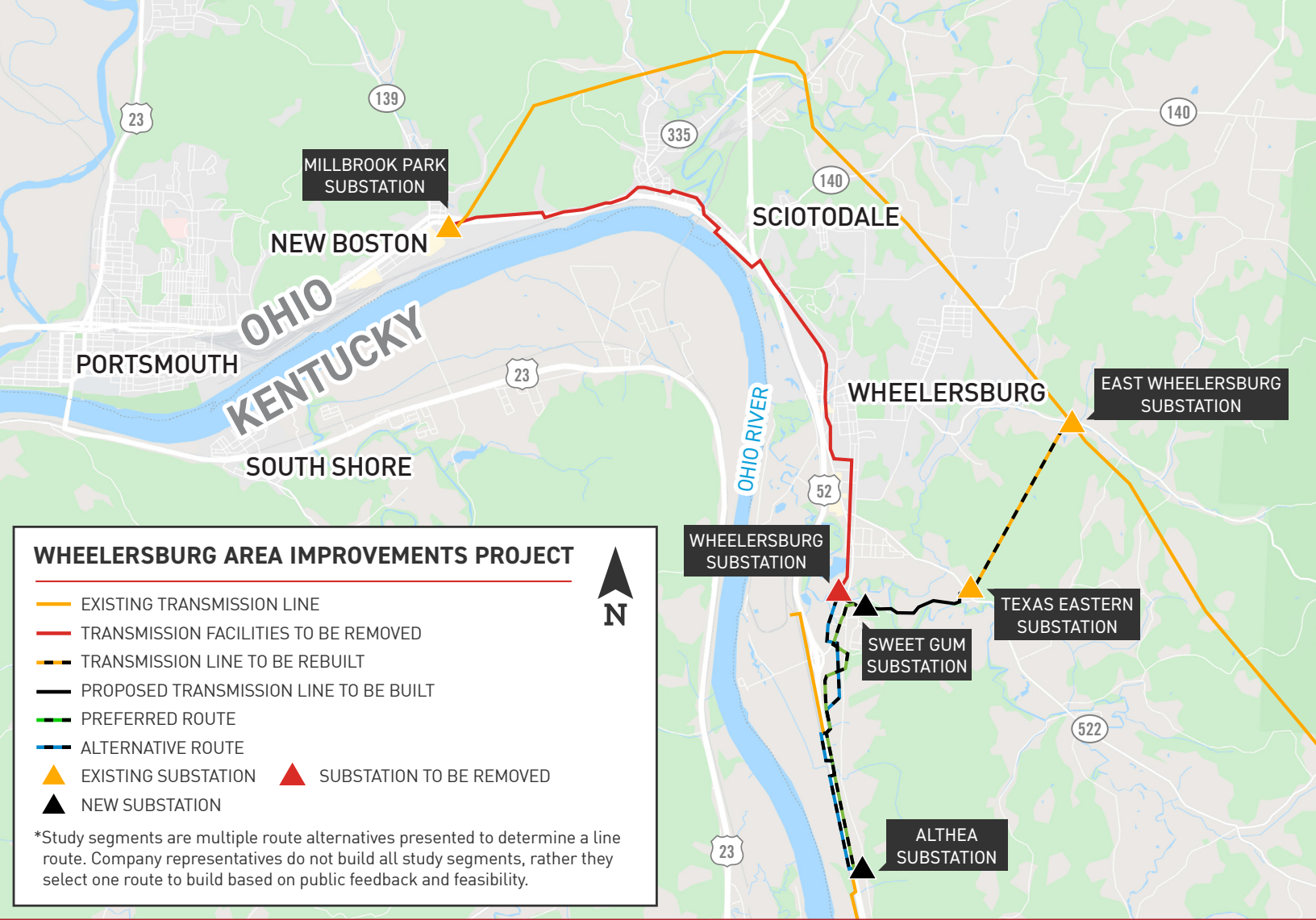
The project area involves:

- City of Wheelersburg
- Porter Township
- Green Township
- Sciotodale
- Allentown
- Village of New Boston

Company representatives plan to evaluate possible study segments* to help determine the location of the improvements. Input from the community helps determine the location of the final line route.

*Study segments, or route options, are multiple alternatives presented to determine a line route. Company representatives do not build all route options, but rather they select one route to build based on public feedback and feasibility.

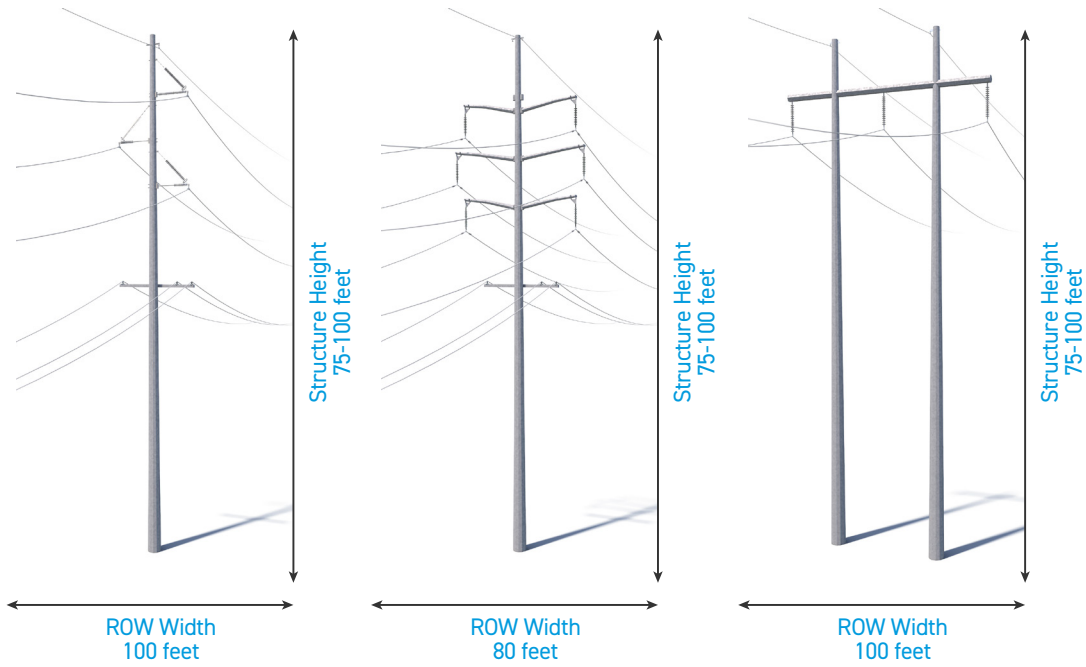




TYPICAL STRUCTURES

The project involves the use of steel single pole and H-frame structures.

Pole Height Range: 75-100 feet
 Right-of-Way Width Range: 80-100 feet



Exact structure, height, and right-of-way requirements may vary.

WE VALUE YOUR INPUT. PLEASE SEND COMMENTS AND QUESTIONS TO:
 MAGGIE BEGGS · PROJECT OUTREACH SPECIALIST
 MRBEGGS@AEP.COM · 380-205-5178
 AEP.OHIO.COM/WHEELERSBURG

