

# RALEIGH COUNTY INDUSTRIAL PARK TRANSMISSION PROJECT

Appalachian Power representatives plan to upgrade the electric transmission grid in Raleigh County. The Raleigh County Industrial Park Transmission Project involves building approximately 4 miles of electric transmission line and a new substation. Construction begins fall 2022 and concludes by spring 2024.

## PROJECT UPDATE

7/25/23: Crews are currently building access roads, the new transmission line and the new substation. All construction is expected to be complete by early 2024.

## WHAT

The project proposes:

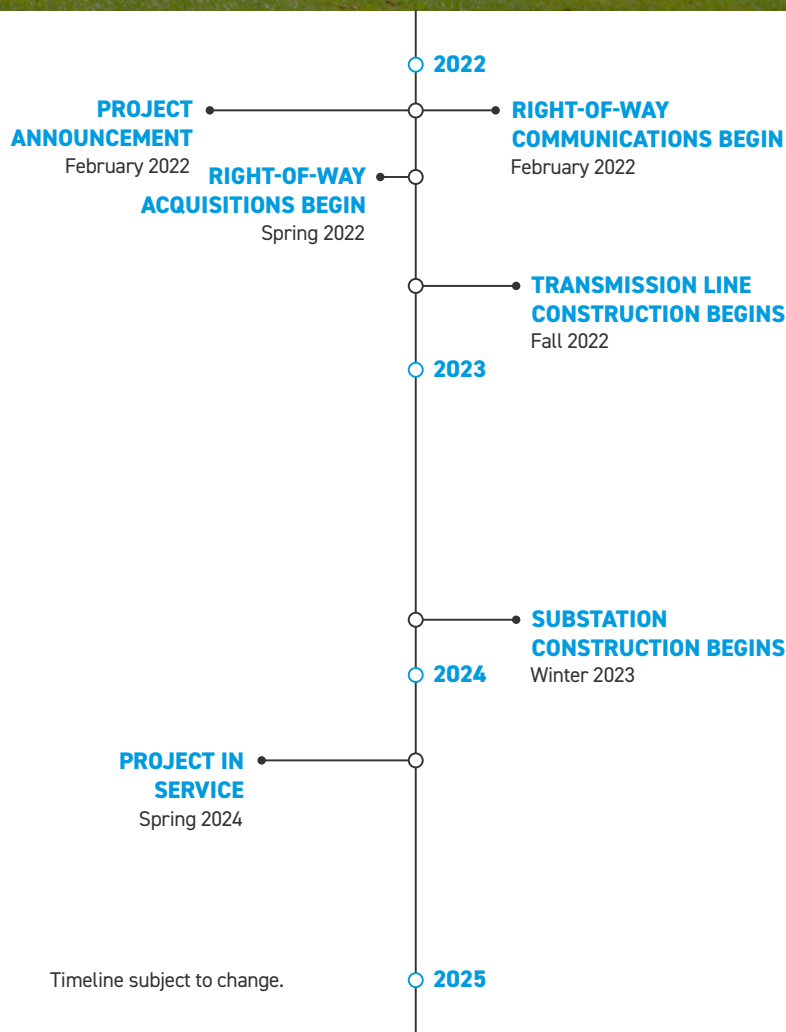
- Building approximately 4 miles of 138-kilovolt (kV) transmission line
- Constructing a new substation

## WHY

The project provides an additional power source to the area. Constructing a new substation supports economic development for businesses in Raleigh County.

## WHERE

The transmission line upgrades begin outside of the Raleigh County Industrial Park in Beaver and end at the new substation located inside the park.



## RALEIGH COUNTY INDUSTRIAL PARK TRANSMISSION PROJECT

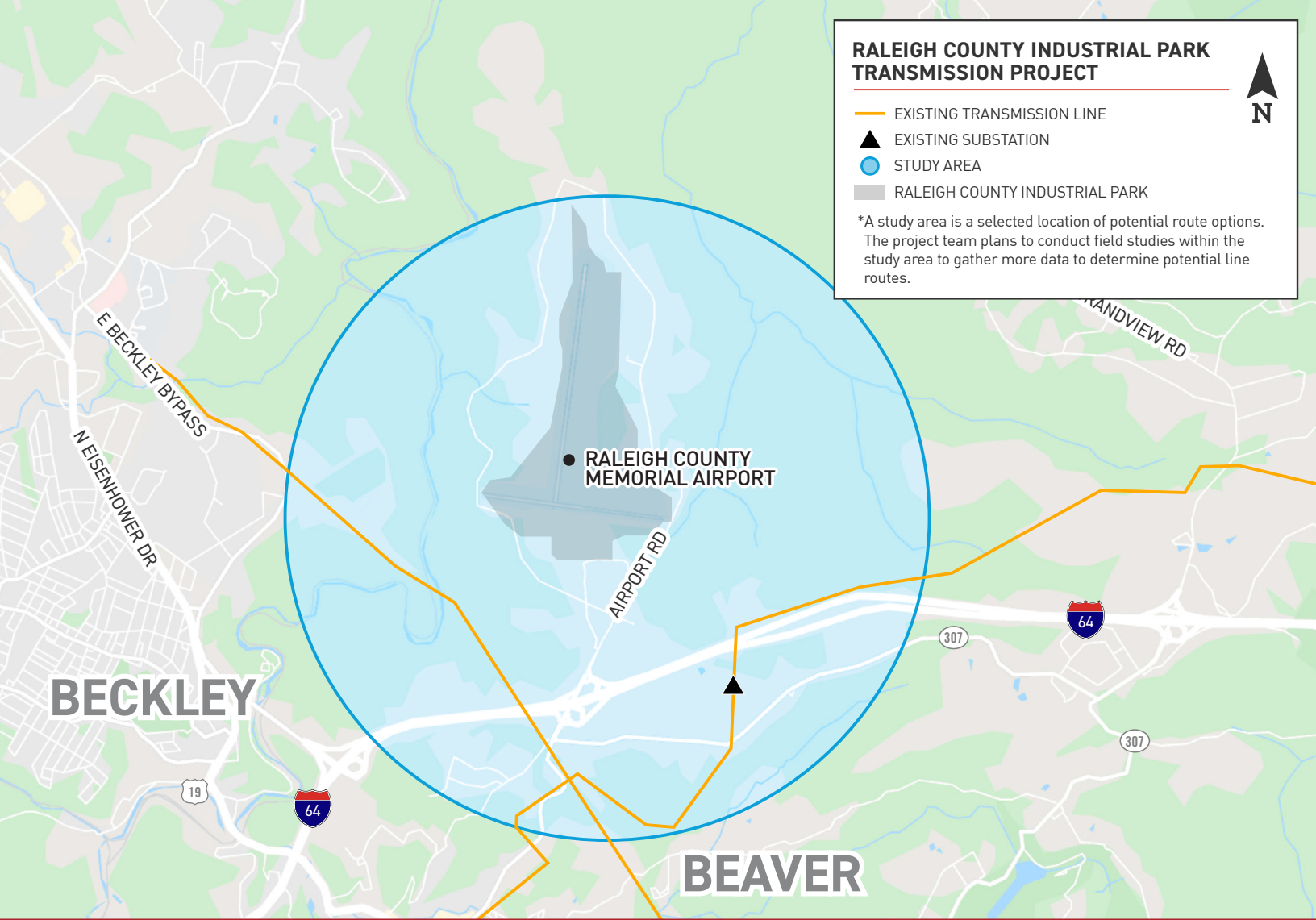
— EXISTING TRANSMISSION LINE

▲ EXISTING SUBSTATION

● STUDY AREA

■ RALEIGH COUNTY INDUSTRIAL PARK

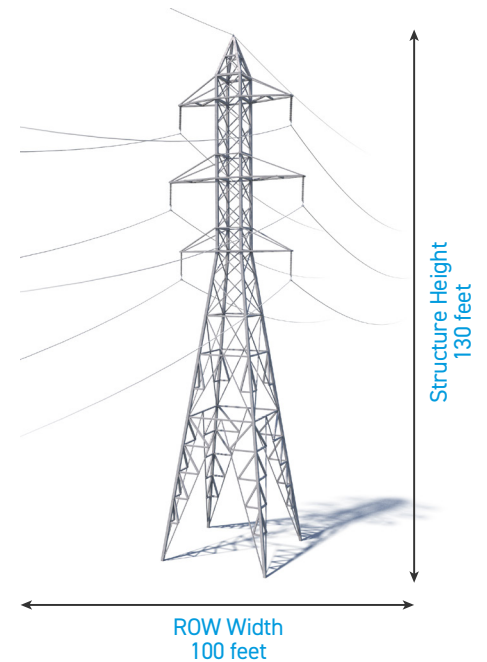
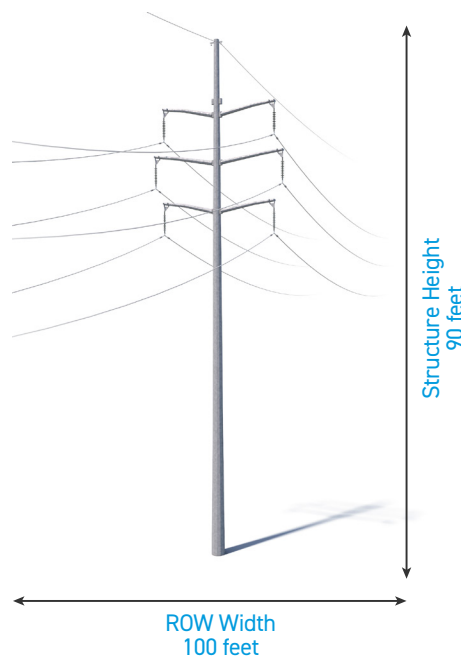
\*A study area is a selected location of potential route options. The project team plans to conduct field studies within the study area to gather more data to determine potential line routes.



## TYPICAL STRUCTURES

Crews plan to build the power line using steel single poles and lattice towers.

At Appalachian Power, we are committed to meeting the energy needs of customers while protecting the environment and natural beauty of the region.



Exact structure, height, and right-of-way requirements may vary.

**WE VALUE YOUR INPUT. PLEASE SEND COMMENTS AND QUESTIONS TO:**

JESSICA LEMONS · PROJECT OUTREACH SPECIALIST

APCO\_OUTREACH@AEP.COM · 833-313-3743

AEPTRANSMISSION.COM/WESTVIRGINIA

