



SHADYSIDE TRANSMISSION LINE EXTENSION PROJECT

AEP Ohio representatives plan power grid upgrades to improve electric reliability for customers in Mead Township and the village of Shadyside. The Shadyside Transmission Line Extension Project involves building approximately 2 miles of 69-kilovolt power line and retiring about 2 miles of power line.

WHAT

The project involves:

- Building about 2 miles of power line.
- Retiring about 2 miles of power line.
- Building Wegee Switch off SR-7 in Shadyside.

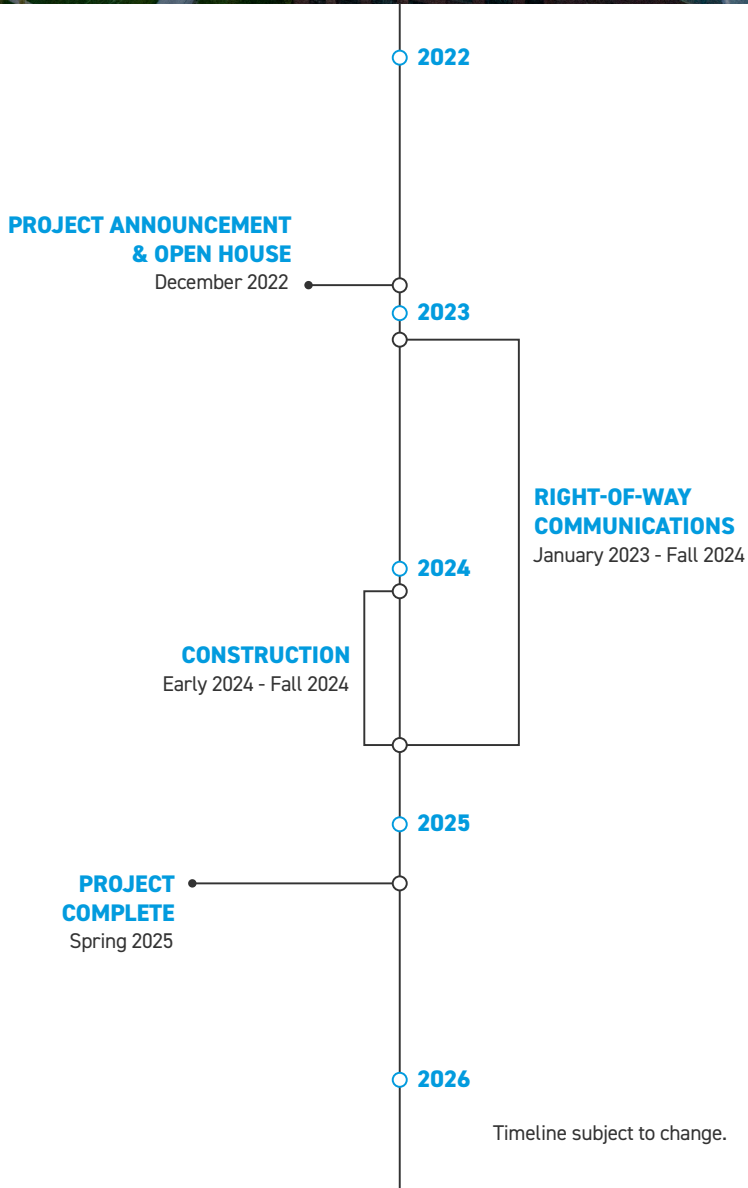
WHY

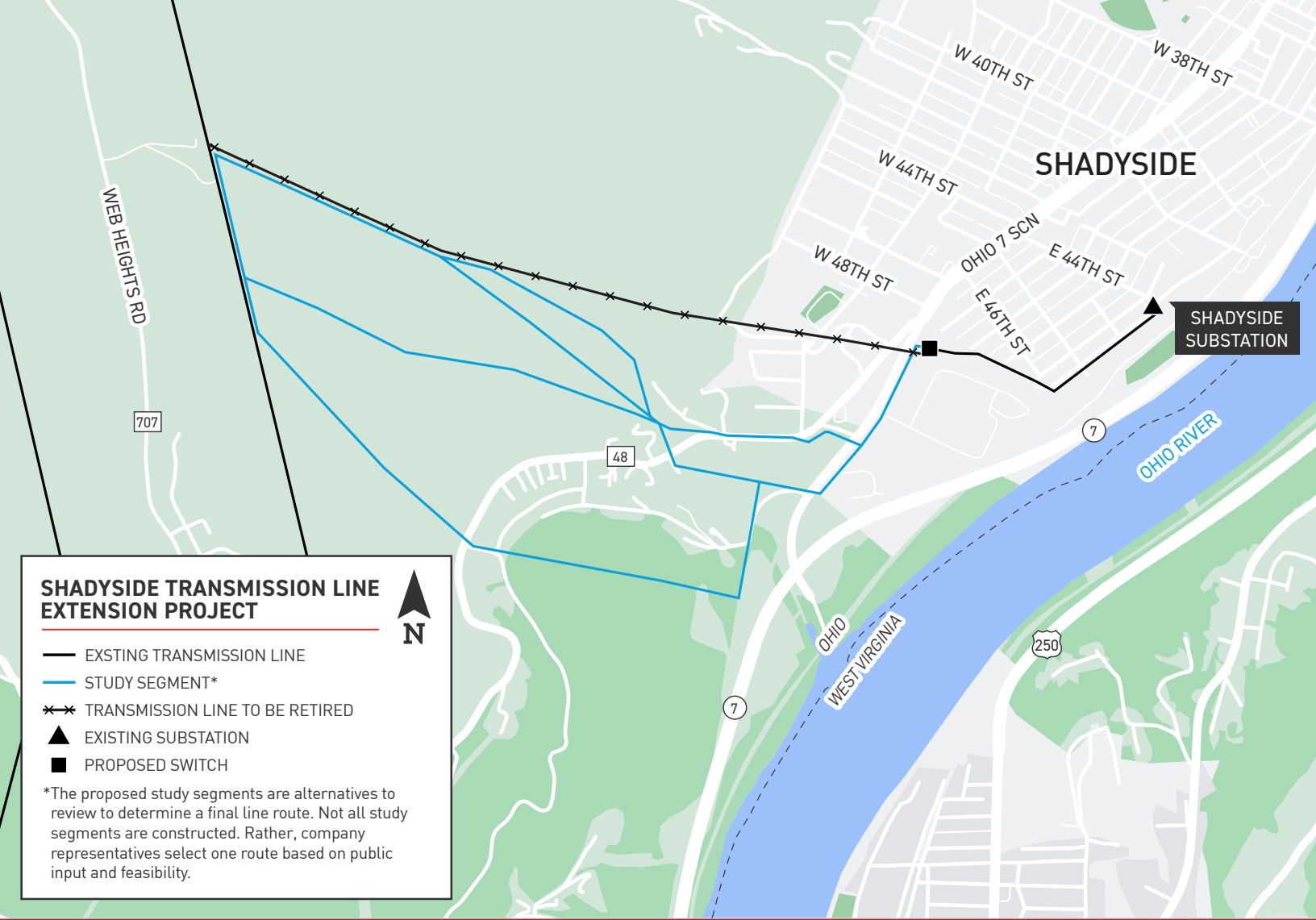
The project upgrades the electric transmission infrastructure between an existing transmission line and a new proposed electric switch pole off Ohio State Highway 7 in Shadyside. Switch poles redirect flow of electricity and isolate equipment from the power grid in the event of an outage, improving functionality and operation.

Without the upgrades, customers could experience temporary power outages during equipment maintenance or extended outage durations when they occur.

WHERE

The project area includes Mead Township and the village of Shadyside in Belmont County.

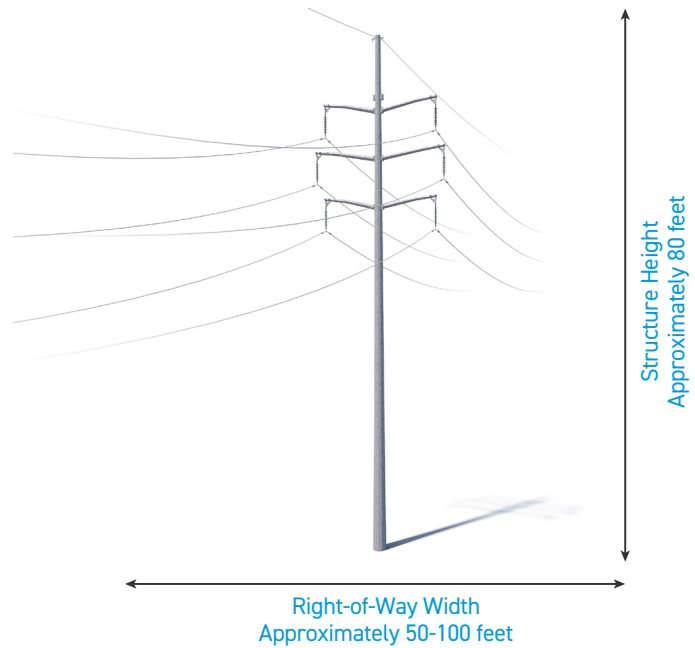




TYPICAL STRUCTURES

This project involves the use of single steel poles.

- Structure Height: [Approximately 80 feet*](#)
- Right-of-Way Width: [Approximately 50-100 feet*](#)



*Exact structure, height, and right-of-way requirements may vary.

WE VALUE YOUR INPUT. PLEASE SEND COMMENTS AND QUESTIONS TO:
 ANGEL FISHER • PROJECT OUTREACH SPECIALIST
 AMFISHER@AEP.COM • 614-933-2546
 AEP OHIO.COM/SHADYSIDE

