


▲ Existing Station	□ Existing Switch Pole	△ Proposed Switch Pole	— Study Segment	— Existing Transmission Line	--- Hancock-Wood Distribution Line	▭ Parcel Boundary	🏫 School	⛪ Place of Worship	▭ Quarry Property	— Stream	🌿 NWI Wetland
--------------------	------------------------	------------------------	-----------------	------------------------------	------------------------------------	-------------------	----------	--------------------	-------------------	----------	---------------

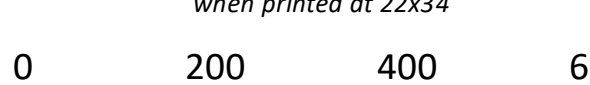


An AEP Company

BOUNDLESS ENERGY™

Transmission line routes are preliminary and subject to change

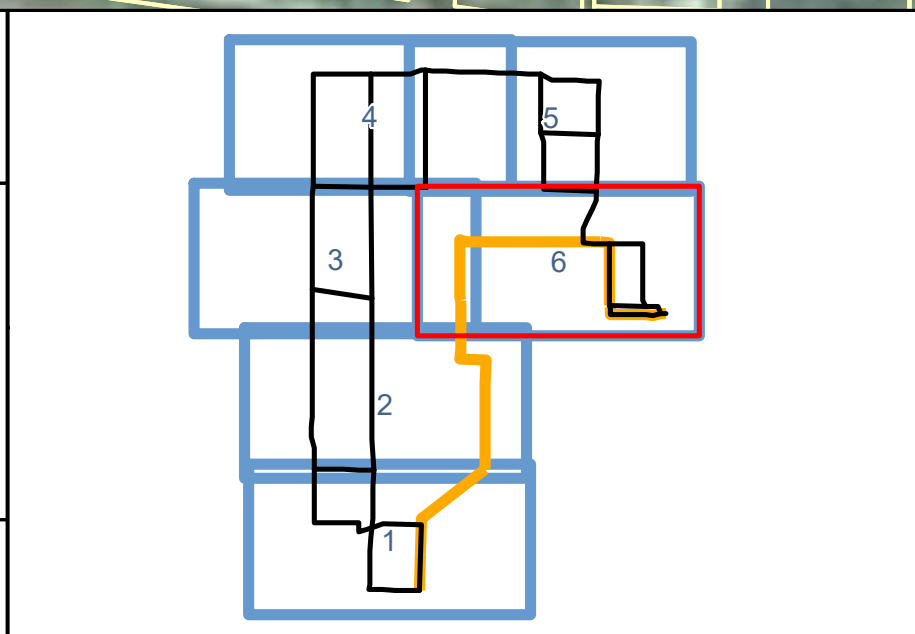
1 inch = 200 feet
when printed at 22x34



0 200 400 600 Feet

Imagery Source: NAIP, 2015

October 29, 2020



Aerial Map 6 of 6

Findlay Area Improvements
North Baltimore Extension