

NORTHEAST LIMA-COLUMBUS GROVE TRANSMISSION IMPROVEMENTS

AEP Ohio representatives plan power grid upgrades in Putnam and Allen counties. The upgrades reduce the need for frequent power line maintenance on deteriorating wooden poles and improve electric reliability in the area. Crews expect to begin construction fall 2023 and conclude in summer 2024.

WHAT

The project involves:

- Rebuilding about 10 miles of 69-kilovolt (kV) transmission line
- Building about 1 mile of 69-kV transmission line

WHY

The planned improvements involve replacing deteriorating wooden poles from the 1950s with modern steel poles and reduce the need for frequent power line maintenance. Building a new power line provides an additional power source to Midwest Electric, improves electric reliability in the area and supports the growing power demand. In the event one line experiences an outage, the other line can continue to serve customers. A stronger transmission grid benefits the local distribution companies and cooperatives, such as AEP Ohio and Midwest Electric, who receive power from the transmission lines.

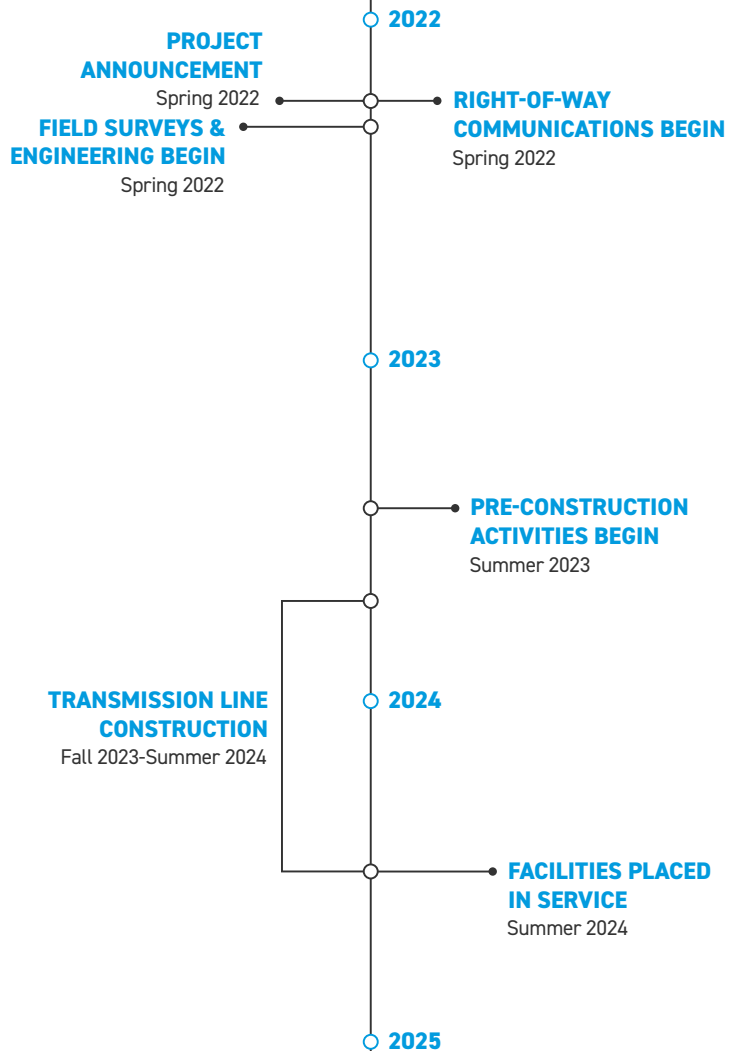
WHERE

Project area includes:

- Putnam County
- Allen County

Company representatives plan to rebuild the 10-mile power line in or near its current location.

Study segments are being evaluated for the new power line. Study segments are multiple alternatives presented to determine a line route. Company representatives do not build all study segments, rather, they select one route to build based on public feedback and feasibility.

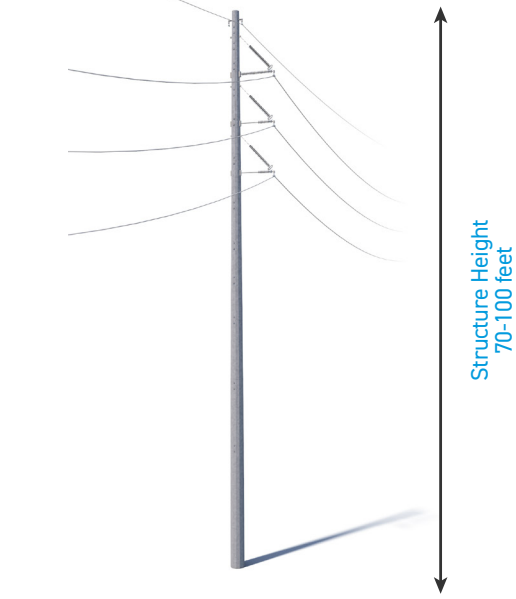
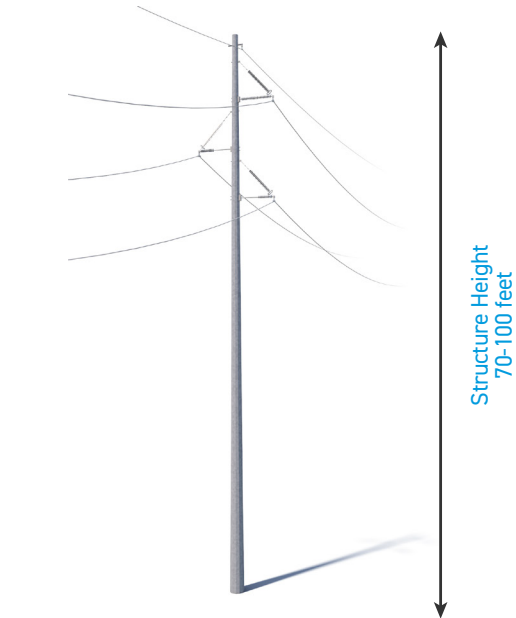


TYPICAL STRUCTURES

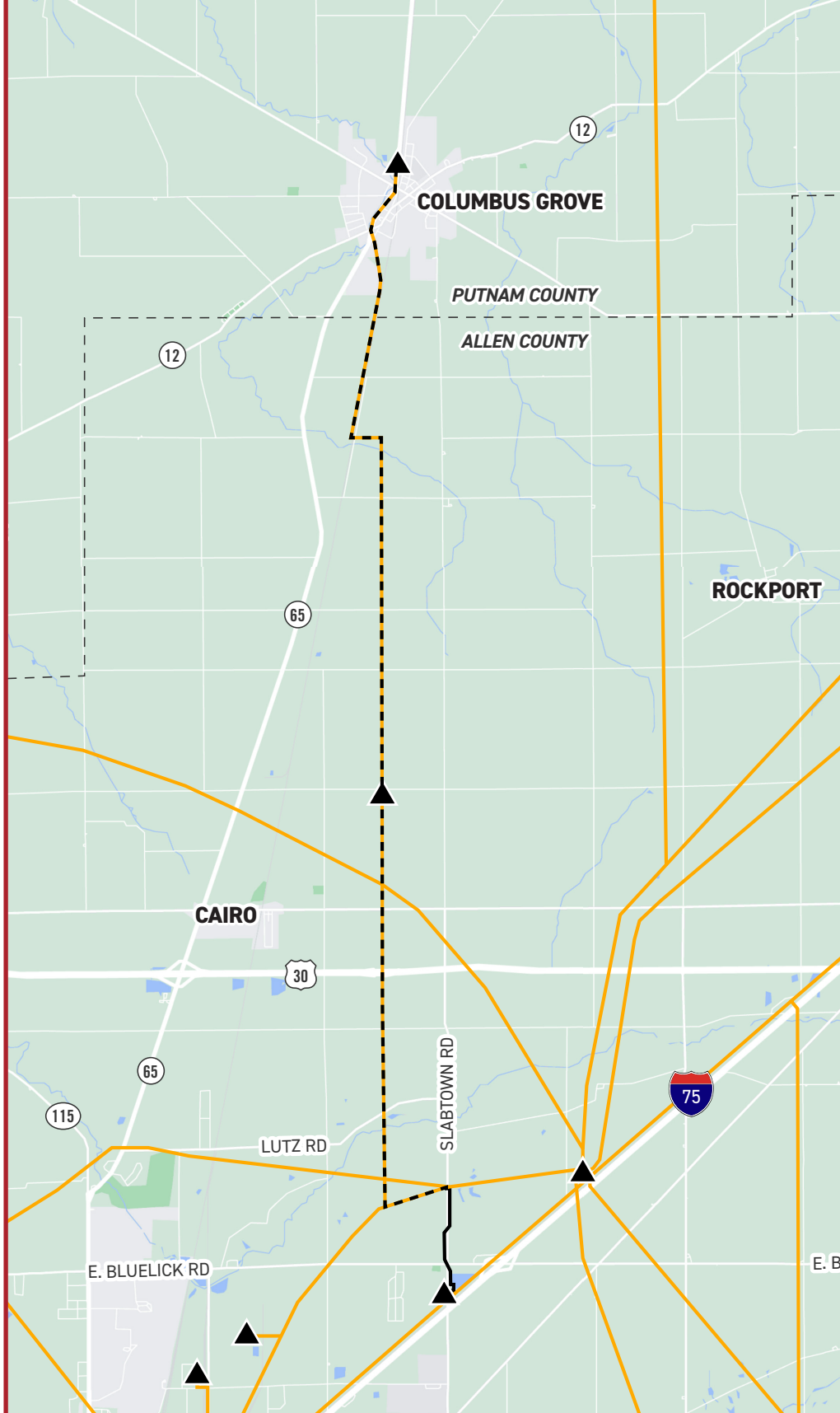
Crews plan to use single steel poles.

Typical Structure Height: 70-100 feet

Typical Right-of-Way Width: 60 feet



*Exact structure, height, and right-of-way requirements may vary.



NORTHEAST LIMA-COLUMBUS GROVE TRANSMISSION IMPROVEMENTS

- EXISTING TRANSMISSION LINE
- TRANSMISSION LINE TO BE BUILT
- ▲ EXISTING SUBSTATION
- ▲ TRANSMISSION LINE TO BE REBUILT



WE VALUE YOUR INPUT. PLEASE SEND COMMENTS AND QUESTIONS TO:

MAGGIE BEGGS · PROJECT OUTREACH SPECIALIST

MRBEGGS@AEP.COM · 380-205-5178

AEP OHIO.COM/NELIMA-COLUMBUSGROVE

